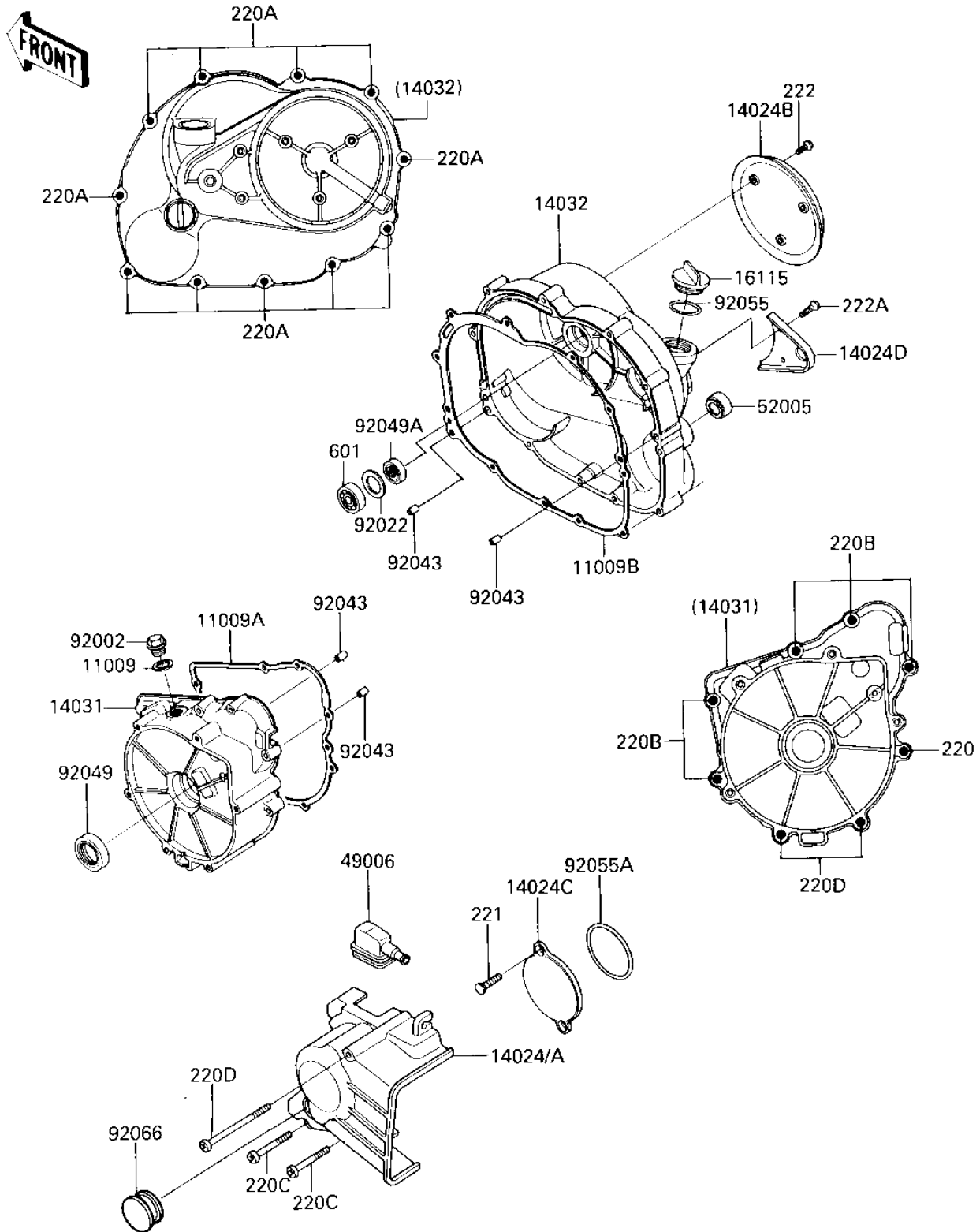


1987 KLT185 PARTS DIAGRAM

ENGINE COVERS

E 143 170 10V



1987 KLT185 PARTS LIST

ENGINE COVERS

ITEM NAME	PART NUMBER	QUANTITY
GASKET,TENSIONER (Ref # 11009)	11009-1238	1
GASKET,GENERATOR COVE (Ref # 11009A)	11009-1393	1
GASKET,CLUTCH COVER (Ref # 11009B)	11009-1395	1
COVER,GEAR CASE (Ref # 14024A)	14024-1241	1
COVER,CLUTCH COVER (Ref # 14024B)	14025-1807	1
COVER (Ref # 14024C)	14025-1813	1
COVER (Ref # 14024D)	14025-1838	1
COVER-GENERATOR (Ref # 14031)	14031-1158	1
COVER-CLUTCH (Ref # 14032)	14032-1158	1
CAP-OIL FILLER (Ref # 16115)	16115-1009	1
BOOT (Ref # 49006)	49006-1183	1
GAUGE,OIL LEVEL (Ref # 52005)	52005-1009	1
BOLT,14X10 (Ref # 92002)	92002-1513	1
WASHER,21X31.5X1.0 (Ref # 92022)	92022-1624	1
PIN-DOWEL (Ref # 92043)	92042-007	4
SEAL-OIL (Ref # 92049)	92049-1317	1
SEAL-OIL (Ref # 92029A)	92049-1191	1
"O" RING,31MM (Ref # 92055)	92055-049	1
RING-0,55MM (Ref # 92055A)	92055-1120	1
SCREW-PAN-CROS,6X25,B (Ref # 220)	220C0625	1
SCREW-PAN HEAD,6X30 (Ref # 220A)	220C0630	11
SCREW-PAN-CROS,6X35,B (Ref # 220B)	220C0635	5
SCREW-PAN-CROS (Ref # 220C)	220C0650	2
SCREW-PAN-CROS,6X70 (Ref # 220D)	220C0670	3
SCREW 6X18 (Ref # 221)	221B0618	2
SCREW-CSK-RD-CROS (Ref # 222)	222C0510	3
SCREW-CSK-RD-CROS (Ref # 222A)	222C0518	2
BEARING BALL #6201 (Ref # 601)	601B6201	1