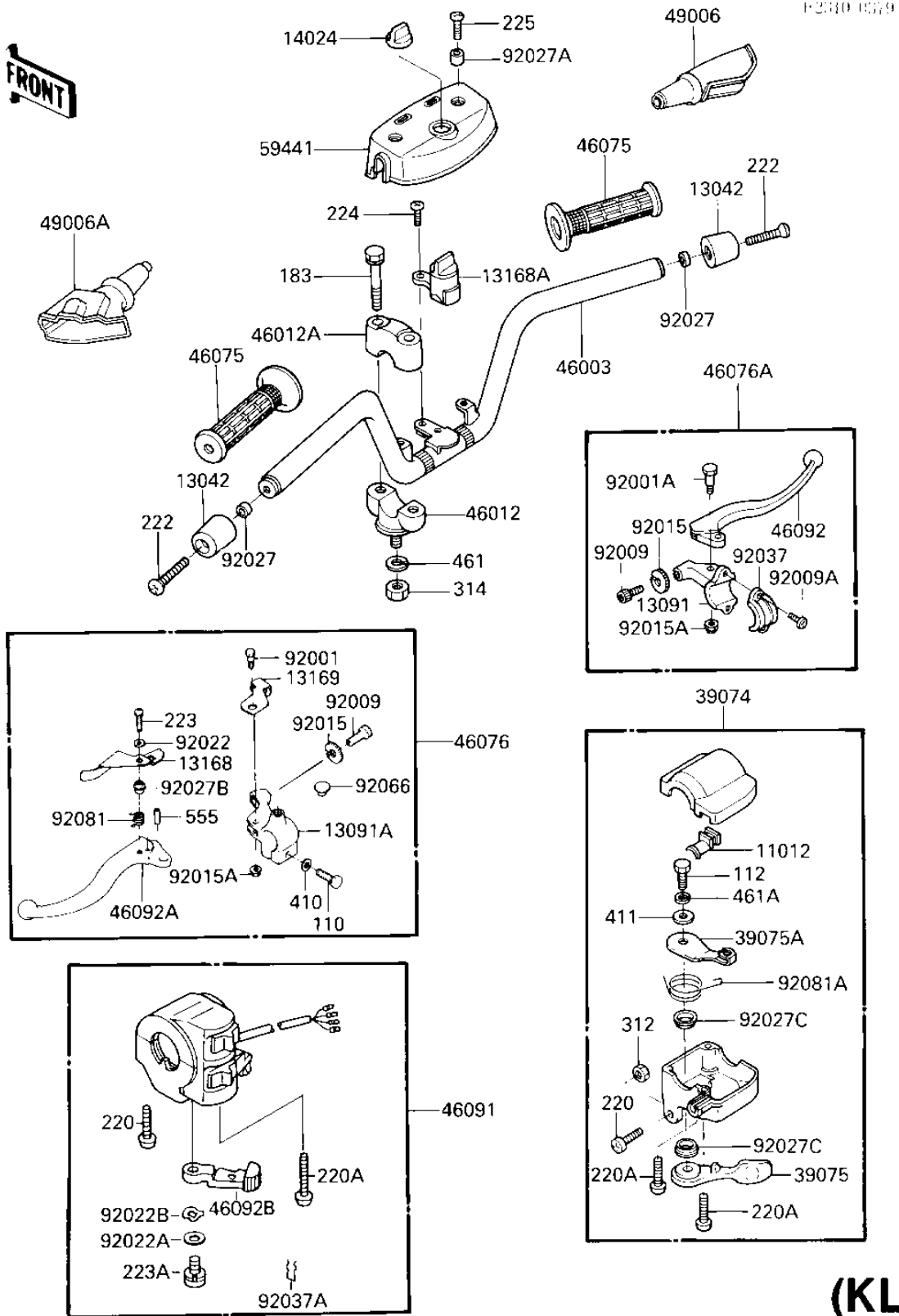


1987 KLT185 PARTS DIAGRAM

HANDLEBAR (KLT185-A2)



(KLT18

1987 KLT185 PARTS LIST

HANDLEBAR (KLT185-A2)

ITEM NAME	PART NUMBER	QUANTITY
CAP (Ref # 11012)	11012-1425	1
WEIGHT,HANDLE (Ref # 13042)	13042-1060	2
HOLDER,RH (Ref # 13091)	13091-1418	1
HOLDER-CLUTCH LEV,BLK (Ref # 13091A)	46094-011-21	1
LEVER,LOCK (Ref # 13168)	13168-1224	1
LEVER,REVERSE (Ref # 13168A)	13168-1274	1
PLATE,CLUTCH LOCK (Ref # 13169)	13169-1398	1
COVER,REVERSE LEVER (Ref # 14024)	14024-1150	1
LEVER-ASSY-THROTTLE (Ref # 39074)	39074-1052	1
LEVER-THROTTLE (Ref # 39075)	39075-1053	1
LEVER-THROTTLE,ARM (Ref # 39075A)	39075-1054	1
UNAVAILABLE IN PRICE BOOK (Ref # 46003)	46003-1233	1
HOLDER,HANDLEBAR,BUFF (Ref # 46012)	46012-002-80	2
HOLDER UPPER HANDLEBAR (Ref # 46012A)	46012-004	2
GRIP,RH (Ref # 46075)	46075-4003	2
LEVER-ASSY-GRIP,CLUTC (Ref # 46076)	46076-1115	1
LEVER-ASSY-GRIP,RH (Ref # 46076A)	46076-1134	1
HOUSING-ASSY-CONTROL, (Ref # 46091)	46091-1414	1
LEVER,FRONT BRAKE (Ref # 46092)	46092-1014	1
LEVER-GRIP,CLUTCH (Ref # 46092A)	46092-1107	1
LEVER-GRIP,CHOKE (Ref # 46092B)	46092-1139	1
BOOTS,LEVER HOLDER (Ref # 49006)	49006-1017	1
BOOT,CLUTCH LEVER (Ref # 49006A)	49006-1057	1
COVER-HANDLE (Ref # 59441)	59441-1064	1
BOLT,5MM (Ref # 92001)	92007-039	1
BOLT,HEX HEAD,5X22 (Ref # 92001A)	92007-046	1
SCREW CABLE ADJUST (Ref # 92009)	46055-003	2
SCREW,5X18 (Ref # 92009A)	92009-1367	2
NUT-LOCK (Ref # 92015)	46056-005	2

1987 KLT185 PARTS LIST

HANDLEBAR (KLT185-A2)

ITEM NAME	PART NUMBER	QUANTITY
NUT-LOCK,5MM (Ref # 92015A)	92019-014	2
WASHER,4X12X1 (Ref # 92022)	92022-1245	1
WASHER,5MM (Ref # 92022A)	92022-1837	1
WASHER,WAVE,5MM (Ref # 92022B)	92022-1838	1
COLLAR,6.3X10X4.8 (Ref # 92027)	92027-1066	2
COLLAR,6.8X10X8.5 (Ref # 92027A)	92027-129	2
COLLAR,RETURN SPRING (Ref # 92027B)	92027-1336	1
COLLAR (Ref # 92027C)	92027-1982	2
CLAMP,LEVER HOLDER (Ref # 92037)	92037-1621	1
CLAMP,CLIP (Ref # 92037A)	92037-1836	1
PLUG,9.5X8 (Ref # 92066)	92066-1077	1
SPRING,CLUTCH LOCK RE (Ref # 92081)	92081-1358	1
SPRING (Ref # 92081A)	92081-1685	1
BOLT HEX HEAD 6X25 (Ref # 110)	110N0625	1
BOLT-UPSET (Ref # 112)	112D0614	1
BOLT-UPSET-WS-SMALL (Ref # 183)	183B0835	4
SCREW-PAN-CROS (Ref # 220)	220C0525	2
SCREW-PAN-CROS (Ref # 220A)	220C0530	3
SCREW-CSK-RD-CROS (Ref # 222)	222C0640	2
SCREW-PAN-WS-CROS (Ref # 223)	223B0420	1
SCREW-PAN-WS-CROS (Ref # 223A)	223C0512	1
SCREW-PAN-WP-CROS,5X2 (Ref # 224)	224B0520	2
SCREW-PAN-WSP-CROS,6X (Ref # 225)	225C0620	2
NUT-HEX (Ref # 312)	312C0500	1
NUT,10MM (Ref # 314)	314B1000	2
WASHER PLAIN 6MM (Ref # 410)	410B0600	1
WASHER PLAIN 6MM (Ref # 411)	410B0600	1
WASHER SPRING 10MM (Ref # 461)	461F1000	2
WASHER SPRING 6MM (Ref # 461A)	461F0600	1