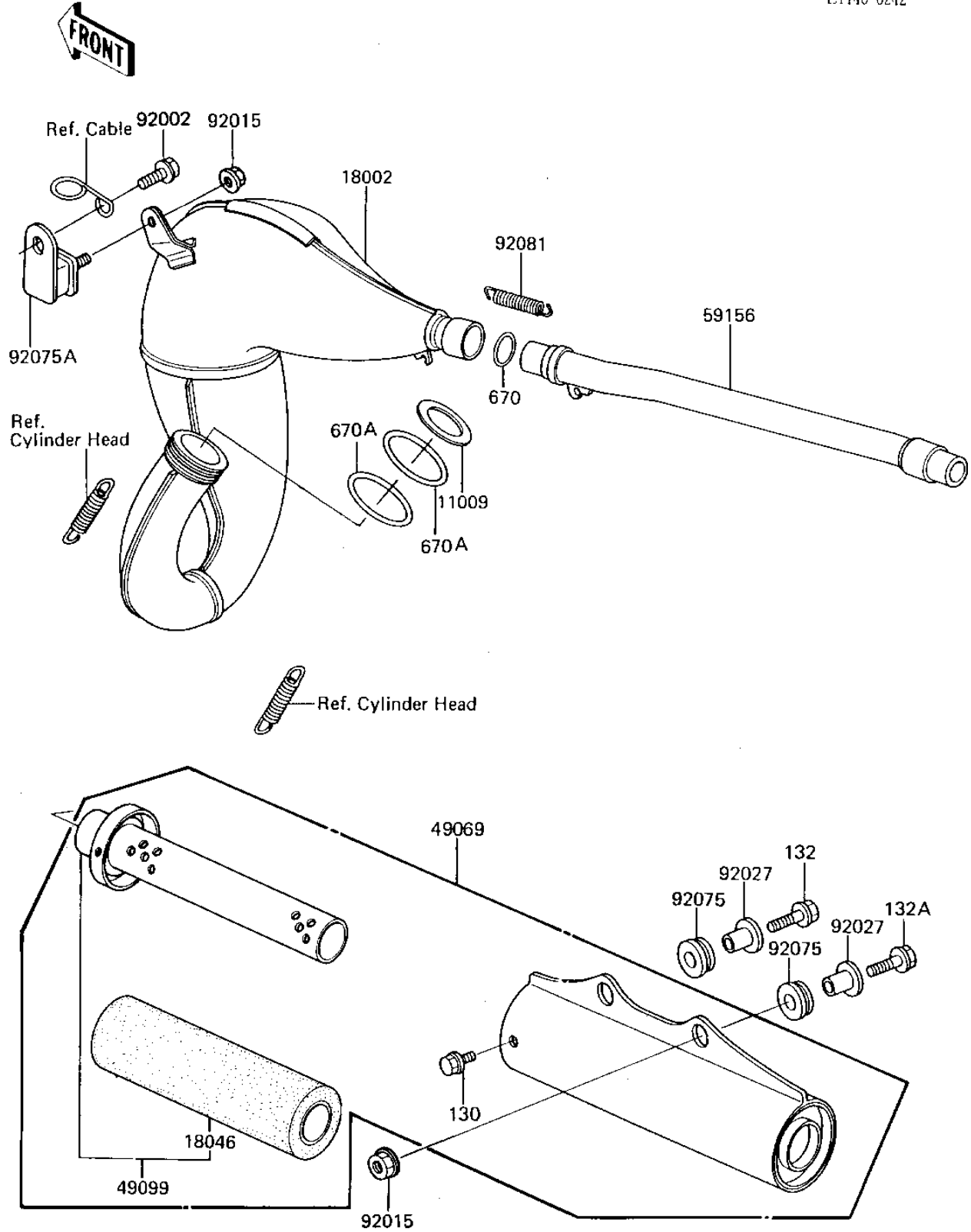


# 1986 KX125 PARTS DIAGRAM

## MUFFLER

E1140-0242



# 1986 KX125 PARTS LIST

## MUFFLER

ITEM NAME	PART NUMBER	QUANTITY
GASKET,EXHAUST PIPE (Ref # 11009)	11009-1587	1
BODY-COMP-MUFFLER (Ref # 18002)	18002-1627	1
WOOL,MUFFLER BAFFLE (Ref # 18046)	18046-1060	1
MUFFLER-ASSY (Ref # 49069)	49069-1053	1
BAFFLE-PIPE MUFFLER (Ref # 49099)	49099-1168	1
PIPE-TAIL,MUFFLER (Ref # 59156)	59156-1052	1
BOLT,6X14 (Ref # 92002)	92150-1340	1
NUT-6MM (Ref # 92015)	92015-1078	3
COLLAR (Ref # 92027)	92027-194	2
DAMPER, HEAD LMP FIT (Ref # 92075)	92075-1123	2
DAMPER,MUFFLER (Ref # 92075A)	92075-1891	1
SPRING,MUFFLER (Ref # 92081)	92081-1988	1
BOLT-FLANGED (Ref # 130)	130G0508	2
BOLT-FLANGED-SMALL (Ref # 132)	132G0625	1
BOLT-FLANGED-SMALL (Ref # 132A)	132G0630	1
"O" RING,22M/M (Ref # 670)	670E2022	1
"O" RING,45M/M (Ref # 670A)	670E3045	2