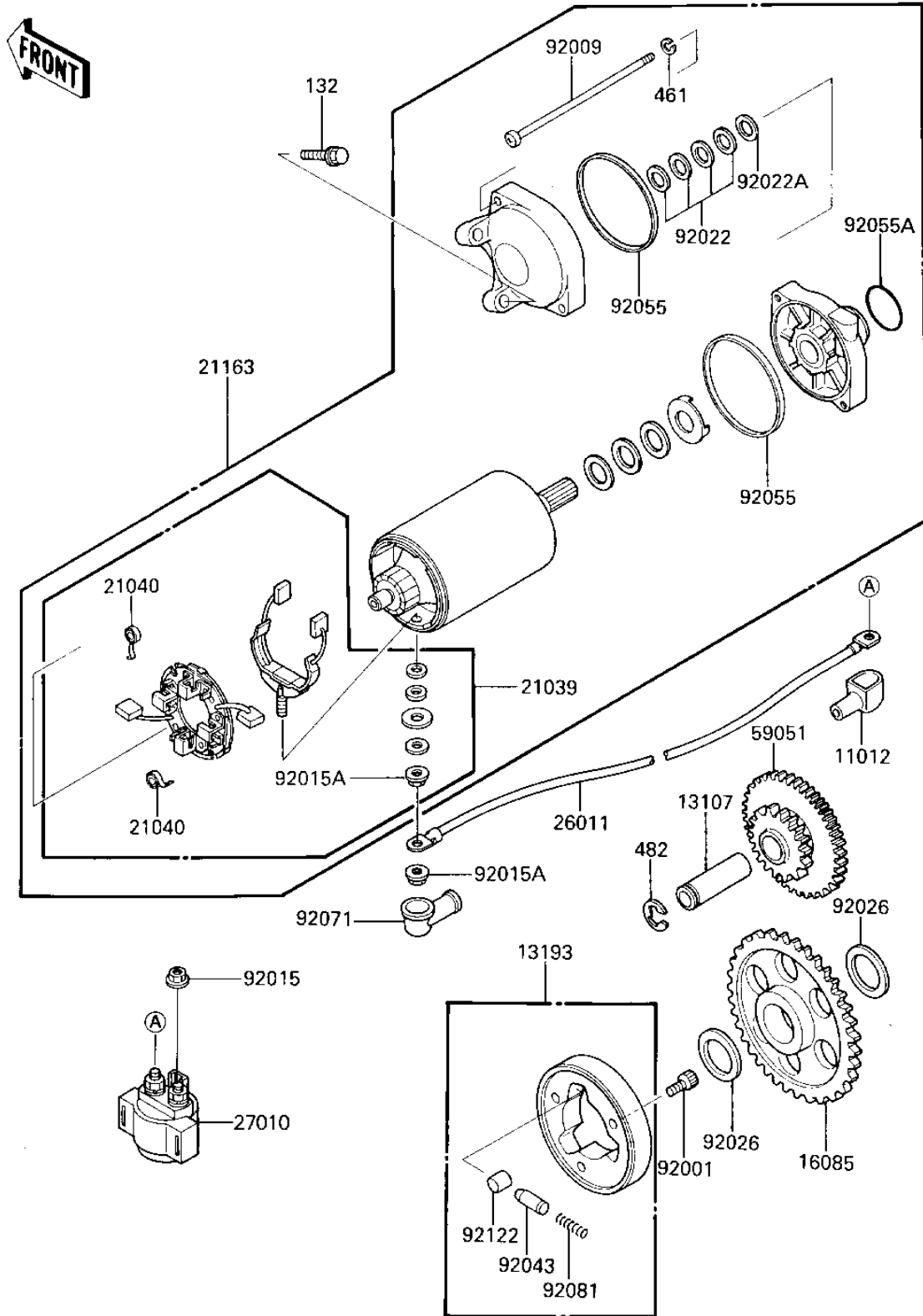


1986 ZL600 Eliminator PARTS DIAGRAM

STARTER MOTOR/STARTER CLUTCH

17840-00/8



1986 ZL600 Eliminator PARTS LIST

STARTER MOTOR/STARTER CLUTCH

ITEM NAME	PART NUMBER	QUANTITY
CAP,TERMINAL (Ref # 11012)	11012-1354	1
SHAFT,IDLE GEAR (Ref # 13107)	13107-1144	1
CLUTCH ASSY,ONEWAY (Ref # 13193)	13193-1002	1
GEAR,ONEWAY CLUTCH (Ref # 16085)	16085-1030	1
BRUSH,CARBON (Ref # 21039)	21039-1053	1
SPRING-BRUSH (Ref # 21040)	21040-1003	4
STARTER-ELECTRIC (Ref # 21163)	21163-1072	1
WIRE-LEAD,STARTER MTR (Ref # 26011)	26011-1251	1
SWITCH,STARTER (Ref # 27010)	27010-1314	1
GEAR-SPUR,IDLE (Ref # 59051)	59051-1138	1
BOLT,SOCKET,8X10 (Ref # 92001)	92001-1424	3
SCREW (Ref # 92009)	92009-1397	2
NUT-6MM (Ref # 92015)	92015-1078	2
NUT,6MM (Ref # 92015A)	92015-1476	2
WASHER,THRUST,0.2T (Ref # 92022)	21025-011	4
WASHER,THRUST,0.8T (Ref # 92022A)	92022-1132	1
SPACER,25X36X3.2 (Ref # 92026)	92026-1025	2
PIN (Ref # 92043)	92043-132	3
"0" RING,STARTER MOTR (Ref # 92055)	92055-1086	2
RING-O (Ref # 92055A)	92055-1276	1
GROMMET,CORD (Ref # 92071)	21017-017	1
SPRING,COIL (Ref # 92081)	92081-159	3
ROLLER (Ref # 92122)	92122-006	3
BOLT-FLANGED-SMALL (Ref # 132)	132J0625	2
WASHER-SPRING,5MM,BLA (Ref # 146)	461K0500	2
CIRCLIP-TYPE-E (Ref # 482)	482J0300	1