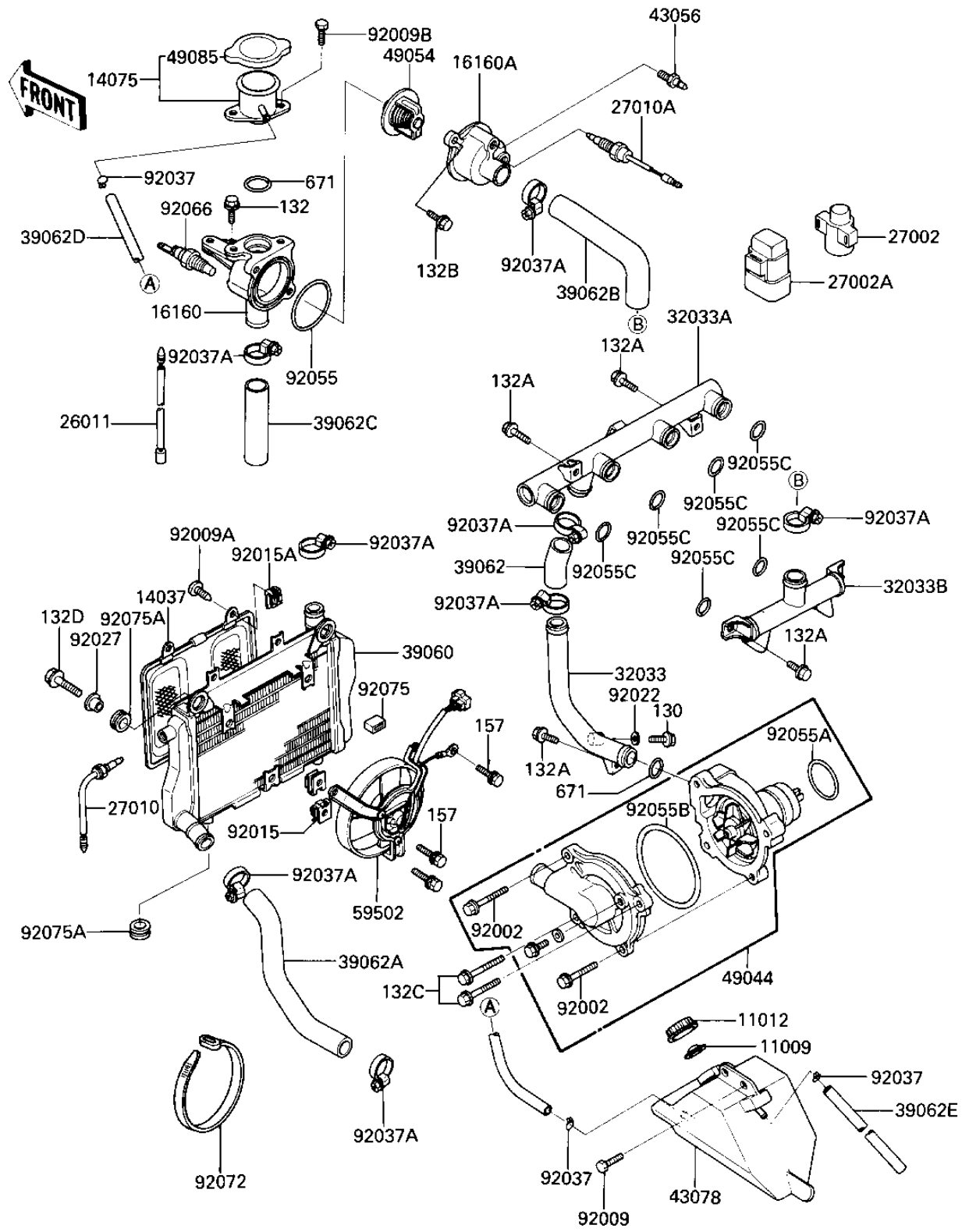


# 1987 Ninja® 1000R PARTS DIAGRAM

RADIATOR/FAN/WATER PUMP (-E/NO. 003101)

E3032-0033



# 1987 Ninja® 1000R PARTS LIST

RADIATOR/FAN/WATER PUMP (-E/NO. 003101)

ITEM NAME	PART NUMBER	QUANTITY
GASKET,RESERVE TANK (Ref # 11009)	11009-1145	1
CAP,RESERVE TANK (Ref # 11012)	11012-1084	1
SCREEN,RADIATOR (Ref # 14037)	14037-1070	1
CAP-ASSY,RADIATOR (Ref # 14075)	14075-1062	1
BODY (Ref # 16160)	16160-1100	1
BODY (Ref # 16160A)	16160-1101	1
WIRE-LEAD,OIL TEMPERA (Ref # 26011)	26011-1335	1
RELAY-ASSY (Ref # 27002)	27002-1054	1
RELAY-ASSY (Ref # 27002A)	27002-1055	1
SWITCH,FAN (Ref # 27010)	27010-1180	1
SWITCH,WARNING (Ref # 27010A)	27010-1199	1
PIPE-WATER (Ref # 32033)	39192-1028	1
PIPE (Ref # 32033A)	32033-1262	1
PIPE (Ref # 32033B)	32033-1846	1
RADIATOR (Ref # 39060)	39060-1063	1
HOSE-COOLING (Ref # 39062)	39062-1072	1
HOSE-COOLING (Ref # 39062A)	39062-1117	1
HOSE-COOLING (Ref # 39062B)	39062-1118	1
HOSE-COOLING (Ref # 39062C)	39062-1119	1
HOSE-COOLING,5.5X10.5 (Ref # 39062D)	39062-1121	1
HOSE-COOLING,5.5X10.5 (Ref # 39062E)	39062-1144	1
BREEDER (Ref # 43056)	43056-003	1
RESERVOIR (Ref # 43078)	43078-1063	1
PUMP-WATER (Ref # 49044)	49044-1058	1
THERMOSTAT (Ref # 49054)	49054-1051	1
CAP-ASSY-PRESSURE (Ref # 49085)	49085-1053	1
FAN-ASSY (Ref # 59502)	59502-1056	1
BOLT,6X22 (Ref # 92002)	92002-1392	2
SCREW (Ref # 92009)	92009-1258	2

# 1987 Ninja® 1000R PARTS LIST

RADIATOR/FAN/WATER PUMP (-E/NO. 003101)

ITEM NAME	PART NUMBER	QUANTITY
SCREW,TAPPING,6MM (Ref # 92009A)	92009-1261	4
SCREW,6X14 (Ref # 92009B)	92009-1288	2
NUT (Ref # 92015)	92015-1487	3
NUT (Ref # 92015A)	92015-1582	4
WASHER,PLAIN (Ref # 92022)	92022-304	1
COLLAR,FUEL TANK FITT (Ref # 92027)	92027-1134	2
CLAMP,CHAIN OILER (Ref # 92037)	92037-147	3
CLAMP,COOLING HOSE (Ref # 92037A)	92037-1985	8
"O" RING,53.5MM (Ref # 92055)	92055-112	1
RING-O,33MM (Ref # 92055A)	92055-1266	1
RING-O,WATER PUMP (Ref # 92055B)	92055-1271	1
RING-O,16MM (Ref # 92055C)	92055-1282	6
PLUG,SENSOR WATER (Ref # 92066)	92066-1183	1
BAND (Ref # 92072)	92072-1197	2
DAMPER,SIDE COVER (Ref # 92075)	92075-1446	2
DAMPER (Ref # 92075A)	92160-1007	4
BOLT-FLANGED (Ref # 130)	130J0610	1
BOLT-FLANGED-SMALL (Ref # 132)	132J0616	2
BOLT-FLANGED-SMALL (Ref # 132A)	132J0612	5
BOLT-FLANGED-SMALL (Ref # 132B)	132J0620	2
BOLT-FLANGED-SMALL (Ref # 132C)	132J0640	2
BOLT-FLANGED-SMALL (Ref # 132D)	132J0825	2
BOLT-WSP (Ref # 157)	157J0616	3
"O" RING,25MM (Ref # 671)	671B2525	2