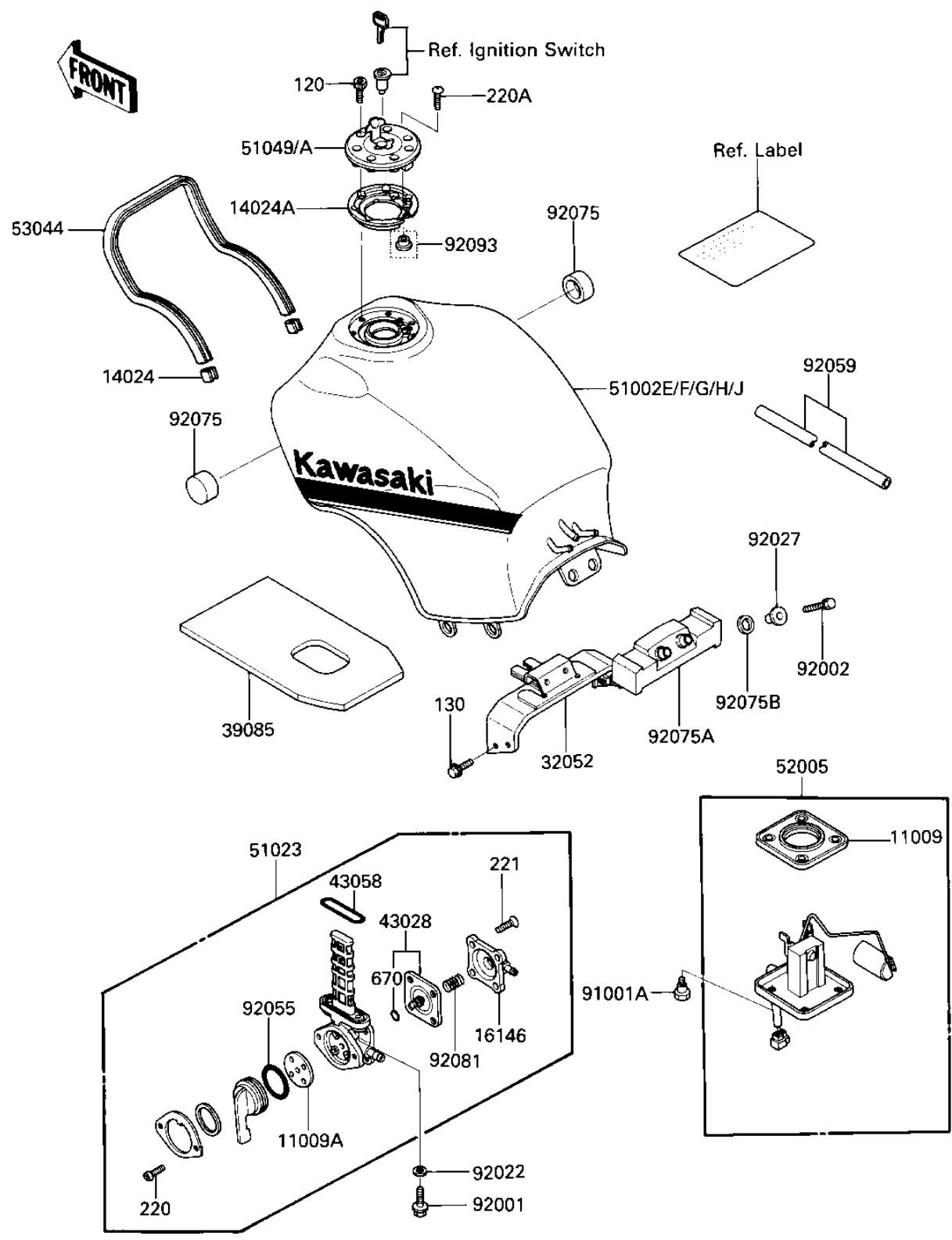


1987 Ninja® 1000R PARTS DIAGRAM

FUEL TANK

F2410-0311



1987 Ninja® 1000R PARTS LIST

FUEL TANK

| ITEM NAME | PART NUMBER | QUANTITY |
|-------------------------------------|---------------|----------|
| GASKET,FUEL GAUGE (Ref # 11009) | 11009-1656 | 1 |
| GASKET,TAP VALVE (Ref # 11009A) | 11009-1530 | 1 |
| COVER,WINDSHIELD END (Ref # 14024) | 14025-1756 | 2 |
| COVER (Ref # 14024A) | 14025-1913 | 1 |
| COVER ASSY,TAP (Ref # 16146) | 16146-1005 | 1 |
| BRACKET-TANK,RR (Ref # 32052) | 32052-1208 | 1 |
| PAD-TANK (Ref # 39085) | 39085-1051 | 1 |
| DIAPHRAGM ASSY,TAP (Ref # 43028) | 43028-1015 | 1 |
| "O" RING (Ref # 43058) | 51039-010 | 1 |
| TANK-COMP-FUEL,EBONY (Ref # 51002G) | 51002-5167-H8 | 1 |
| TANK-COMP,FUEL,EBONY (Ref # 51002H) | 51002-5168-H8 | 1 |
| TAP-ASSY,FUEL (Ref # 51023) | 51023-1119 | 1 |
| CAP-TANK,FUEL (Ref # 51049A) | 51049-1079 | 1 |
| GAUGE,FUEL (Ref # 52005) | 52005-1072 | 1 |
| TRIM,FUEL TANK (Ref # 53044) | 53044-1158 | 1 |
| BOLT,6X20,FUEL TAP (Ref # 92001) | 92001-1091 | 2 |
| BOLT,FUEL GAGE (Ref # 92001A) | 92001-1705 | 4 |
| BOLT,6X30 (Ref # 92002) | 92002-1295 | 2 |
| WASHER-PLAIN (Ref # 92022) | 92022-183 | 2 |
| COLLAR,6=16.1 (Ref # 92027) | 92027-1847 | 2 |
| "O" RING,TAP LEVER (Ref # 92055) | 92055-1027 | 1 |
| TUBE,5X8X660 (Ref # 92059) | 92059-1663 | 1 |
| DAMPER,FUEL TANK (Ref # 92075) | 92075-1716 | 2 |
| DAMPER,FUEL TANK (Ref # 92075A) | 92075-1762 | 1 |
| DAMPER RUBBER,SIGNAL (Ref # 92075B) | 92075-310 | 2 |
| SPRING,TAP (Ref # 92081) | 92081-1171 | 1 |
| OIL SEAL,FUEL TANK (Ref # 92093) | 92093-1030 | 1 |
| BOLT-SOCKET (Ref # 120) | 120S0512 | 7 |
| BOLT,FLANGED,6X14 (Ref # 130) | 130G0614 | 4 |

1987 Ninja® 1000R PARTS LIST

FUEL TANK

| ITEM NAME | PART NUMBER | QUANTITY |
|---------------------------------|-------------|----------|
| SCREW PAN HEAD 3X8 (Ref # 220) | 220B0308 | 2 |
| SCREW-PAN-CROS (Ref # 220A) | 220C0508 | 1 |
| SCREW-CSK-CROS,4X14 (Ref # 221) | 221B0414 | 4 |
| "O" RING,4MM (Ref # 670) | 670B1504 | 1 |