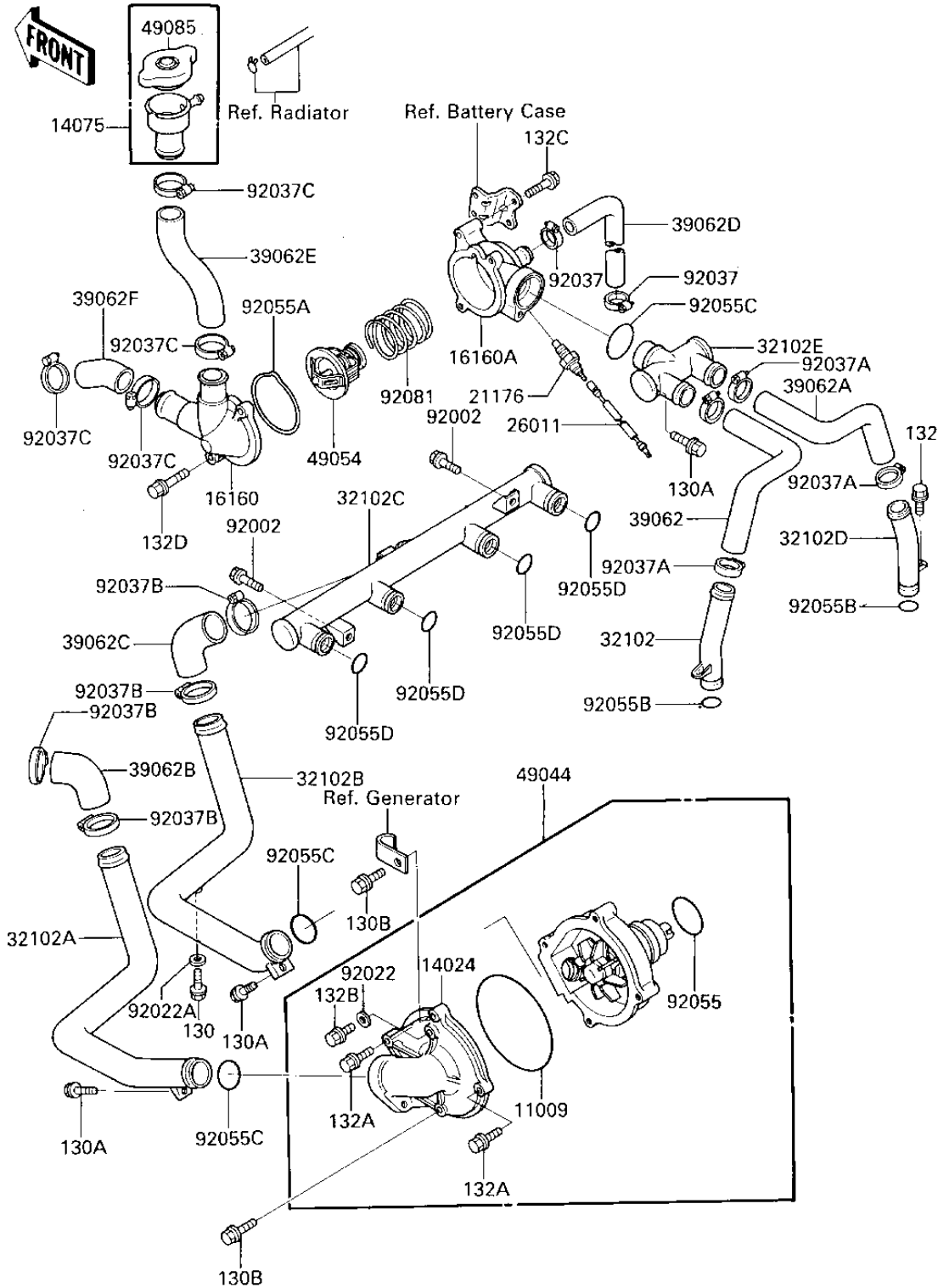


## 1986 Voyager XII PARTS DIAGRAM

### WATER PUMP



F	I
1	1
1	1
1	1
1	1
2	2
2	2
3	3
3	3
3	3
3	3
3	3
3	3
3	3
3	3
3	3
4	4
4	4
4	4
5	5
5	5
5	5
5	5
5	5
5	5
5	5
5	5

I

# 1986 Voyager XII PARTS LIST

## WATER PUMP

ITEM NAME	PART NUMBER	QUANTITY
GASKET,WATER PUMP (Ref # 11009)	11009-1621	1
COVER,WATER PUMP (Ref # 14024)	14024-1348	1
CAP-ASSY (Ref # 14075)	14075-1063	1
BODY,THERMOSTAT,UPP (Ref # 16160)	16160-1103	1
BODY,THERMOSTAT,LWR (Ref # 16160A)	16160-1104	1
SENSOR,WATER (Ref # 21176)	21176-1054	1
WIRE-LEAD,SENSOR (Ref # 26011)	26011-1364	1
PIPE,HEAD,LH (Ref # 32102)	32033-1933	1
PIPE,HOSE-PUMP (Ref # 32102A)	32033-1934	1
PIPE,PUMP-HOSE (Ref # 32102B)	32033-1935	1
PIPE,CYLINDER (Ref # 32102C)	32033-1936	1
PIPE,HEAD,RH (Ref # 32102D)	32033-1968	1
PIPE,THERMOSTAT (Ref # 32102E)	32033-1990	1
HOSE-COOLING,LH (Ref # 39062)	39062-1149	1
HOSE-COOLING,RH (Ref # 39062A)	39062-1150	1
HOSE-COOLING,RADIATOR (Ref # 39062B)	39062-1151	1
HOSE-COOLING,PIPE-PIP (Ref # 39062C)	39062-1152	1
HOSE-COOLING,PY-PASS (Ref # 39062D)	39062-1153	1
HOSE-COOLING,THERMO-C (Ref # 39062E)	39062-1154	1
HOSE-COOLING,THERMO-R (Ref # 39062F)	39062-1174	1
PUMP-WATER (Ref # 49044)	49044-1056	1
THERMOSTAT (Ref # 49054)	49054-1001	1
CAP-ASSY-PRESSURE (Ref # 49085)	49085-1053	1
BOLT (Ref # 92002)	92002-1350	2
WASHER,6MM (Ref # 92022)	92022-1627	1
WASHER,PLAIN (Ref # 92022A)	92022-304	1
CLAMP,COOLING HOSE (Ref # 92037)	92170-1032	2
CLAMP,COOLING HOSE (Ref # 92037A)	92170-1034	4
CLAMP,COOLING HOSE (Ref # 92037B)	92170-1036	4

# 1986 Voyager XII PARTS LIST

## WATER PUMP

ITEM NAME	PART NUMBER	QUANTITY
CLAMP,COOLING HOSE (Ref # 92037C)	92037-1985	4
RING-O,33MM (Ref # 92055)	92055-1266	1
RING-O,THERMOSTAT (Ref # 92055A)	92055-1324	1
RING-O,18.8X2.4 (Ref # 92055B)	92055-1325	2
RING-O,27.6X3.2 (Ref # 92055C)	92055-1328	3
RING-O,18.54X2.6 (Ref # 92055D)	92055-1350	4
SPRING,THERMOSTAT (Ref # 92081)	92081-1104	1
BOLT,FLANGED,6X10 (Ref # 130)	130N0610	1
BOLT-FLANGED,6X12 (Ref # 130A)	130N0612	3
BOLT-FLANGED (Ref # 130B)	130N0645	2
BOLT-FLANGED-SMALL (Ref # 132)	132E0612	2
BOLT-FLANGED-SMALL (Ref # 132A)	132E0622	2
BOLT-FLANGED-SMALL (Ref # 132B)	132J0612	1
BOLT-FLANGED-SMALL (Ref # 132C)	132J0614	2
BOLT-FLANGED-SMALL (Ref # 132D)	132J0620	2