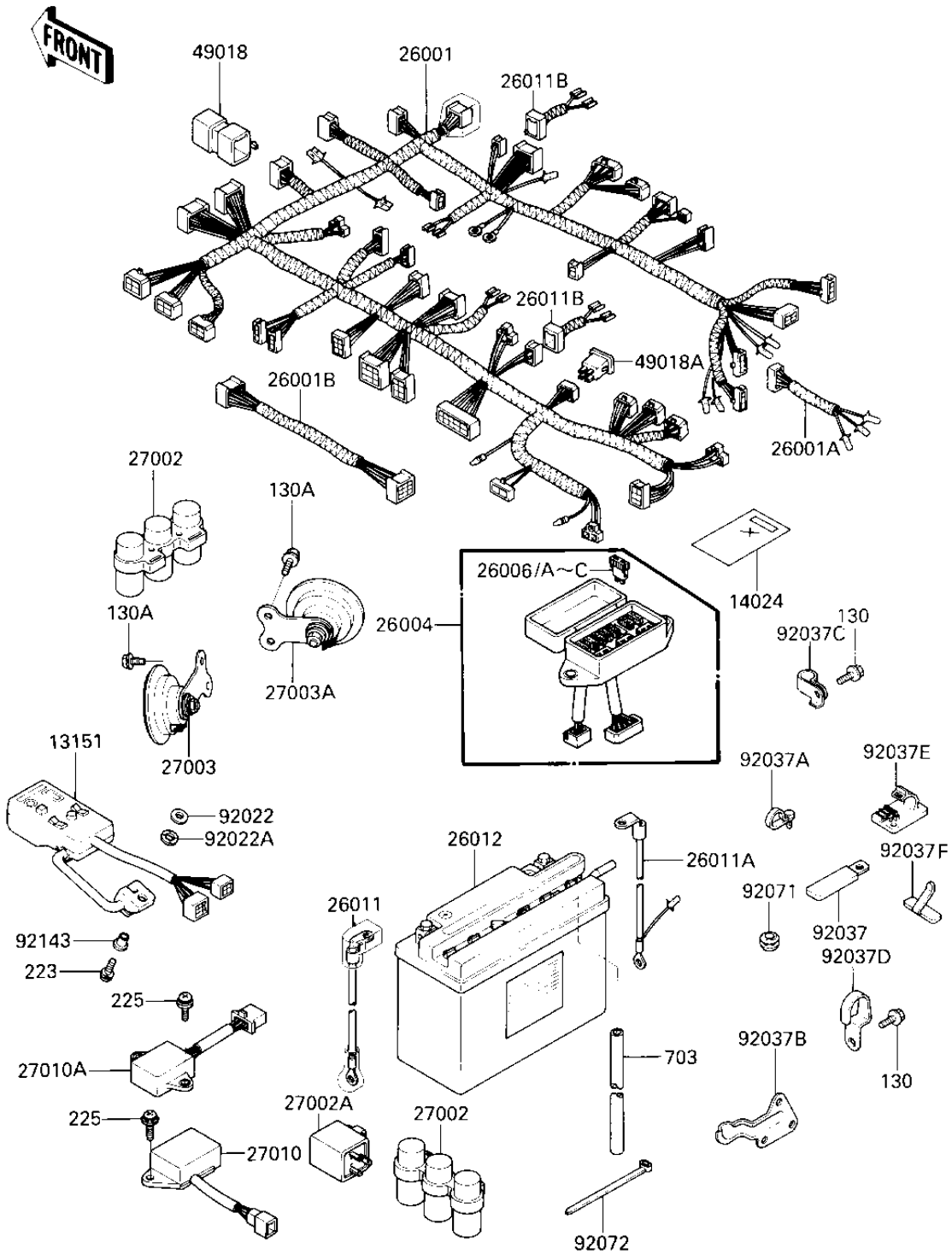


1986 Voyager XII PARTS DIAGRAM

CHASSIS ELECTRICAL EQUIPMENT



- R
- 1
- 1
- 2
- 2
- 2
- 2
- 2
- 2
- 2
- 2
- 2
- 2
- 2
- 2
- 4
- 4
- 9
- 9
- 9
- 9
- 9
- 9
- 9
- 9

1986 Voyager XII PARTS LIST

CHASSIS ELECTRICAL EQUIPMENT

ITEM NAME	PART NUMBER	QUANTITY
SWITCH-COMP (Ref # 13151)	13151-1063	1
COVER (Ref # 14024)	14024-1352	1
HARNESS,MAIN (Ref # 26001)	26001-1756	1
HARNESS,REAR FENDER (Ref # 26001A)	26001-1760	1
HARNESS,RADIO (Ref # 26001B)	26001-1789	1
FUSE-ASSY (Ref # 26004)	26004-1065	1
FUSE,30A-G (Ref # 26006)	26006-1006	2
FUSE,10A-R (Ref # 26006A)	26006-1007	6
FUSE,3A-P (Ref # 26006B)	26006-1060	1
FUSE (Ref # 26006C)	26006-1061	2
WIRE-LEAD,BATTERY(+) (Ref # 26011)	26011-1339	1
WIRE-LEAD,BATTERY(-) (Ref # 26011A)	26011-1340	1
WIRE-LEAD (Ref # 26011B)	26011-1365	2
YUA BAT SY50-N18L-AT (Ref # 26012)	26012-1124	1
RELAY-ASSY (Ref # 27002)	27002-1052	2
RELAY-ASSY,TURN SIGNA (Ref # 27002A)	27002-1060	1
HORN,350HZ,LH (Ref # 27003)	27003-1239	1
HORN,415HZ,RH (Ref # 27003A)	27003-1240	1
SWITCH,RESERVE LIGHTI (Ref # 27010)	27010-1069	1
SWITCH,TURN SIGNAL OP (Ref # 27010A)	27010-1166	1
DIODE (Ref # 49018)	49018-1052	1
DIODE,HEAD LAMP (Ref # 49018A)	49018-1054	1
WASHER 6.5X20X1.6T (Ref # 92022)	92022-125	1
WASHER (Ref # 92022A)	92022-1828	1
CLAMP,WIRING HARNESS (Ref # 92037)	92037-1069	6
CLAMP (Ref # 92037A)	92037-1163	1
CLAMP (Ref # 92037B)	92037-1720	1
CLAMP,HOSE (Ref # 92037C)	92037-1727	1
CLAMP,HOSE (Ref # 92037D)	92037-1785	1

1986 Voyager XII PARTS LIST

CHASSIS ELECTRICAL EQUIPMENT

ITEM NAME	PART NUMBER	QUANTITY
CLAMP (Ref # 92037E)	92037-1816	1
CLAMP (Ref # 92037F)	92037-1820	3
GROMMET (Ref # 92071)	92071-024	3
BAND,L=185 (Ref # 92072)	92072-1195	11
COLLAR (Ref # 92143)	92143-1026	1
BOLT,FLANGED,6X10 (Ref # 130)	130B0610	2
BOLT-FLANGED,6X12 (Ref # 130A)	130C0612	4
SCREW-PAN-WS-CROS (Ref # 223)	223C0620	1
SCREW,6X14 (Ref # 224)	92009-1333	2
SCREW-PAN-WSP-CROS (Ref # 225)	225B0620	4
TUBE-RUBBER,8X750 (Ref # 703)	703A08750	1