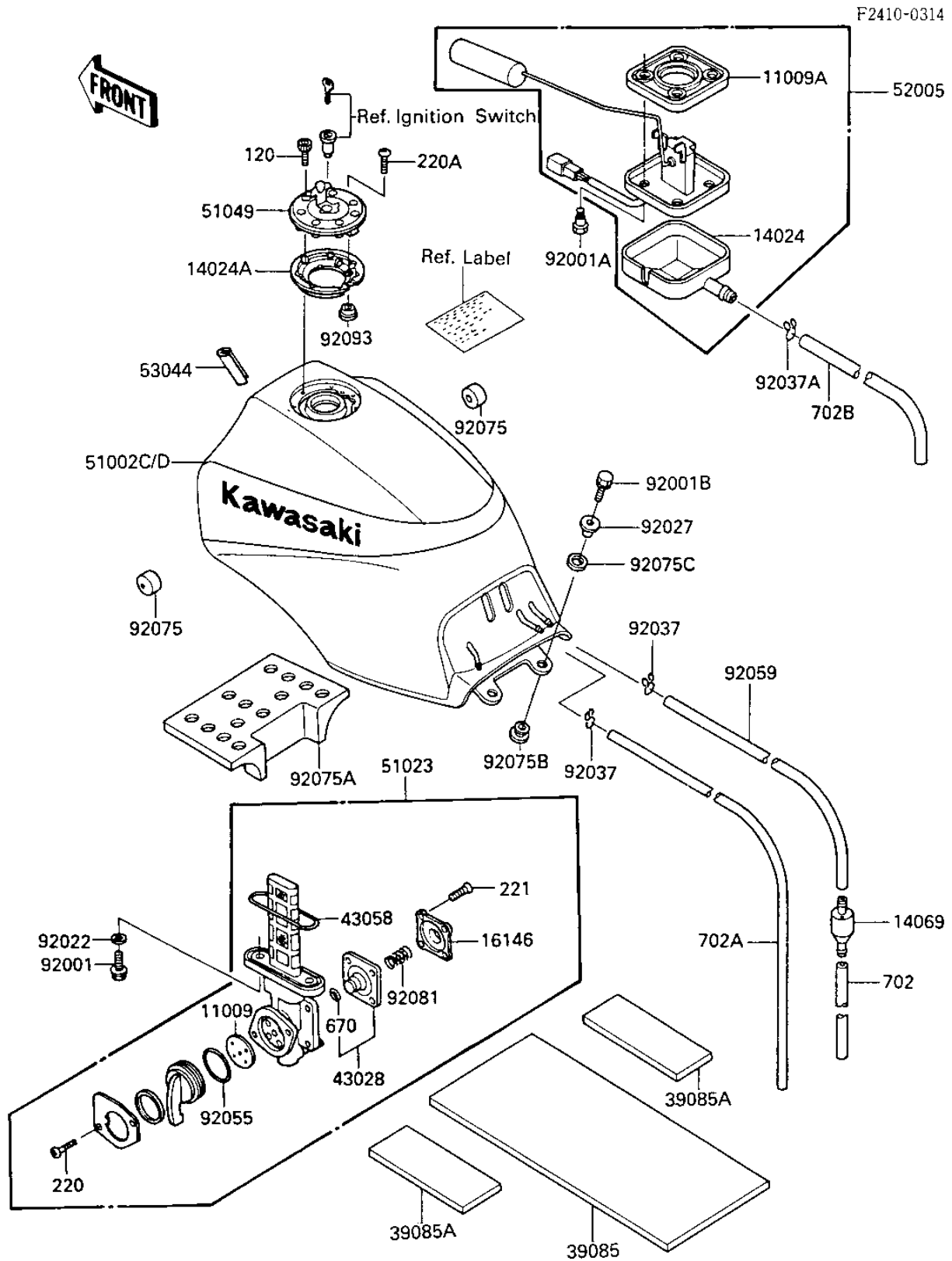


# 1986 Ninja® PARTS DIAGRAM

## FUEL TANK



# 1986 Ninja® PARTS LIST

## FUEL TANK

| ITEM NAME                           | PART NUMBER   | QUANTITY |
|-------------------------------------|---------------|----------|
| GASKET,TAP VALVE (Ref # 11009)      | 11009-1194    | 1        |
| GASKET,FUEL GAUGE (Ref # 11009A)    | 11009-1656    | 1        |
| COVER,FUEL GAGE (Ref # 14024)       | 14025-1536    | 1        |
| COVER (Ref # 14024A)                | 14025-1913    | 1        |
| BREATHER,FUEL TANK (Ref # 14069)    | 14069-1004    | 1        |
| COVER ASSY,TAP (Ref # 16146)        | 16146-1005    | 1        |
| PAD-TANK,FUEL TANK (Ref # 39085)    | 39085-1052    | 1        |
| PAD-TANK,FUEL TANK (Ref # 39085A)   | 39085-1053    | 2        |
| DIAPHRAGM ASSY,TAP (Ref # 43028)    | 43028-1015    | 1        |
| "O" RING (Ref # 43058)              | 51039-010     | 1        |
| TANK-COMP-FUEL,F RED (Ref # 51002C) | 51002-5122-P9 | 1        |
| TANK-COMP-FUEL,F.RED (Ref # 51002D) | 51002-5123-P9 | 1        |
| TAP-ASSY,FUEL (Ref # 51023)         | 51023-1110    | 1        |
| CAP-TANK,FUEL (Ref # 51049)         | 51049-1079    | 1        |
| GAUGE,FUEL (Ref # 52005)            | 52005-1058    | 1        |
| TRIM (Ref # 53044)                  | 53044-1216    | 1        |
| BOLT,6X20,FUEL TAP (Ref # 92001)    | 92001-1091    | 2        |
| BOLT,FUEL GAGE (Ref # 92001A)       | 92001-1705    | 4        |
| BOLT,6X25 (Ref # 92001B)            | 92002-1137    | 2        |
| WASHER-PLAIN (Ref # 92022)          | 92022-183     | 2        |
| COLLAR 6.8X10X14.5 (Ref # 92027)    | 92027-156     | 2        |
| CLAMP FUEL PIPE (Ref # 92037)       | 92037-010     | 1        |
| CLAMP FUEL PIPE (Ref # 92037)       | 92037-010     | 2        |
| CLAMP,CHAIN OILER (Ref # 92037A)    | 92037-147     | 1        |
| "O" RING,TAP LEVER (Ref # 92055)    | 92055-1027    | 1        |
| TUBE,7X10X230 (Ref # 92059)         | 92059-1519    | 1        |
| DAMPER RUBBER,FL TANK (Ref # 92075) | 92075-125     | 2        |
| DAMPER,FUEL TANK (Ref # 92075A)     | 92075-1672    | 1        |
| RUBBER,FENDER COVER (Ref # 92075B)  | 92075-174     | 2        |

# 1986 Ninja® PARTS LIST

## FUEL TANK

| ITEM NAME                         | PART NUMBER | QUANTITY |
|-----------------------------------|-------------|----------|
| DAMPER RUBBER (Ref # 92075C)      | 92075-175   | 2        |
| SPRING,TAP (Ref # 92081)          | 92081-1171  | 1        |
| OIL SEAL,FUEL TANK (Ref # 92093)  | 92093-1030  | 1        |
| BOLT-SOCKET (Ref # 120)           | 120S0512    | 7        |
| SCREW PAN HEAD 3X8 (Ref # 220)    | 220B0308    | 2        |
| SCREW-PAN-CROS (Ref # 220A)       | 220C0508    | 1        |
| SCREW-CSK-CROS,4X14 (Ref # 221)   | 221B0414    | 4        |
| "O" RING,4MM (Ref # 670)          | 670B1504    | 1        |
| TUBE-BREATHER (BULK) (Ref # 702)  | 702A071000  | 1        |
| TUBE-BREATHER (BULK) (Ref # 702A) | 702A071000  | 1        |
| TUBE-BREATHER (BULK) (Ref # 702B) | 702A071000  | 1        |