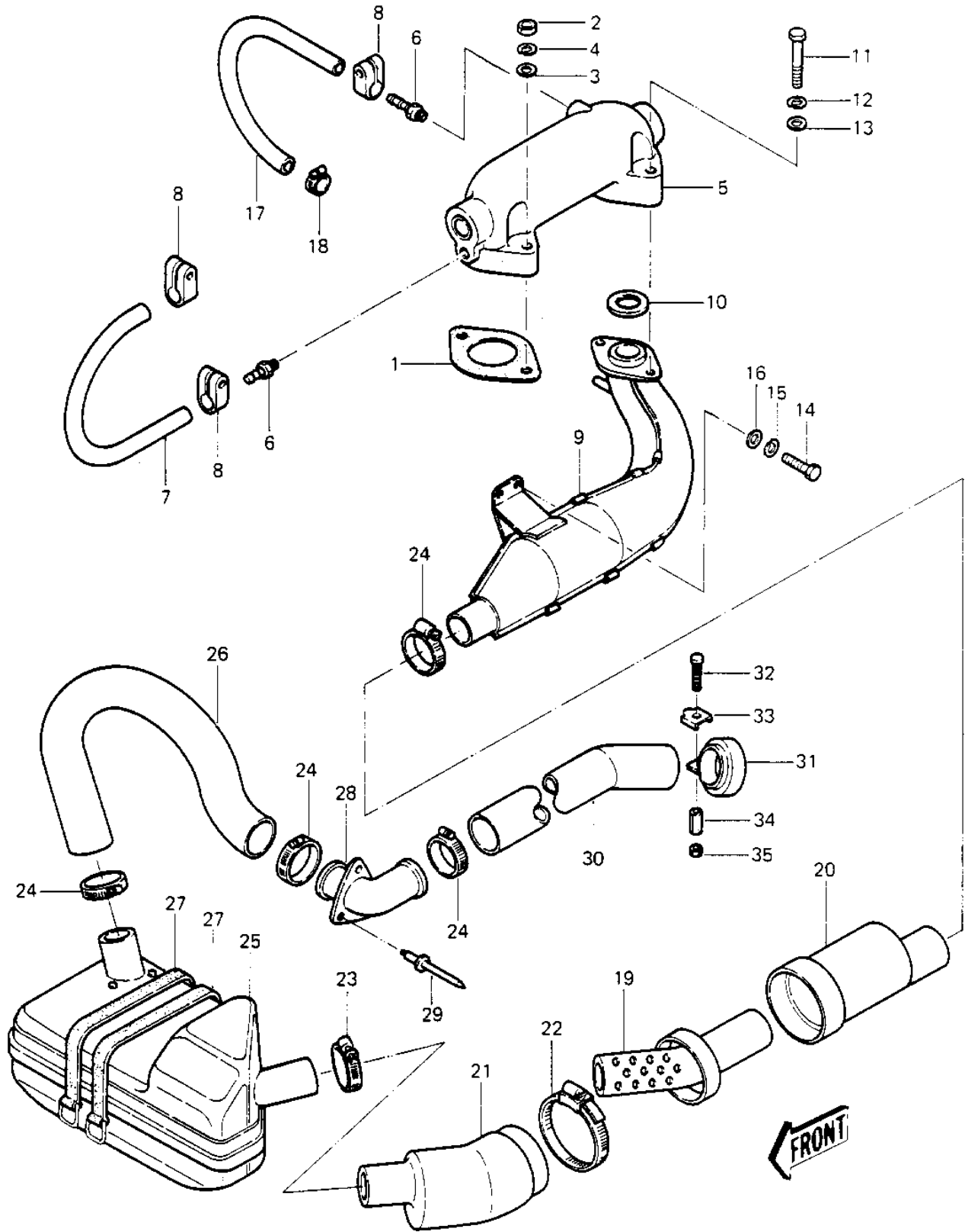


1984 JS440 PARTS DIAGRAM

MUFFLER ('84-'86 JS440-A8/A9/A10)



1984 JS440 PARTS LIST

MUFFLER ('84-'86 JS440-A8/A9/A10)

| ITEM NAME | PART NUMBER | QUANTITY |
|----------------------------------|---------------|----------|
| GASKET,EXHAUST (Ref # 1) | 11060-3710 | 1 |
| NUT,8 M/M (Ref # 2) | 311M0800 | 2 |
| WASHER (Ref # 3) | 410S0800 | 2 |
| WASHER SPRING 8MM (Ref # 4) | 461S0800 | 2 |
| PIPE-EXHAUST (Ref # 5) | 18049-3006-YR | 1 |
| JOINT,HOSE (Ref # 6) | 92005-3001 | 2 |
| TUBE,9X190 (Ref # 7) | 92059-3021 | 1 |
| CLAMP,HOSE (Ref # 8) | 92037-504 | 3 |
| EXPANSION CHAMBER (Ref # 9) | 18001-520 | 1 |
| GASKET,EXHAUST (Ref # 10) | 11009-3784 | 1 |
| BOLT,8X45 (Ref # 11) | 110R0845 | 2 |
| WASHER SPRING 8MM (Ref # 12) | 461S0800 | 2 |
| WASHER (Ref # 13) | 410S0800 | 2 |
| BOLT,8X20 (Ref # 14) | 110R0820 | 2 |
| WASHER SPRING 8MM (Ref # 15) | 461S0800 | 2 |
| WASHER (Ref # 16) | 410S0800 | 2 |
| HOSE (Ref # 17) | 92059-523 | 1 |
| CLAMP,HOSE (Ref # 18) | 92037-504 | 1 |
| PIPE-RESNTR. CONNECTR (Ref # 19) | 59151-528 | 1 |
| TUBE (Ref # 20) | 92059-542 | 1 |
| TUBE (Ref # 21) | 92059-543 | 1 |
| CLAMP (Ref # 22) | 92037-541 | 1 |
| CLAMP,HOSE (Ref # 23) | 92037-506 | 1 |
| CLAMP (Ref # 24) | 92037-509 | 4 |
| MUFFLER-COMP,WATERBOX (Ref # 25) | 49070-3714 | 1 |
| HOSE (Ref # 26) | 92059-528 | 1 |
| BAND (Ref # 27) | 92072-511 | 2 |
| PIPE,TAIL (Ref # 28) | 59156-506 | 1 |
| RIVET (Ref # 29) | 92039-3701 | 3 |

1984 JS440 PARTS LIST

MUFFLER ('84-'86 JS440-A8/A9/A10)

| ITEM NAME | PART NUMBER | QUANTITY |
|------------------------|-------------|----------|
| HOSE, TAIL (Ref # 30) | 92059-549 | 1 |
| CLAMP (Ref # 31) | 92037-545 | 1 |
| SCREW, 6X45 (Ref # 32) | 92009-3747 | 1 |
| WASHER (Ref # 33) | 92095-513 | 1 |
| NUT, 6M/M (Ref # 34) | 92015-532 | 1 |
| NUT, 6M/M (Ref # 35) | 311R0600 | 1 |