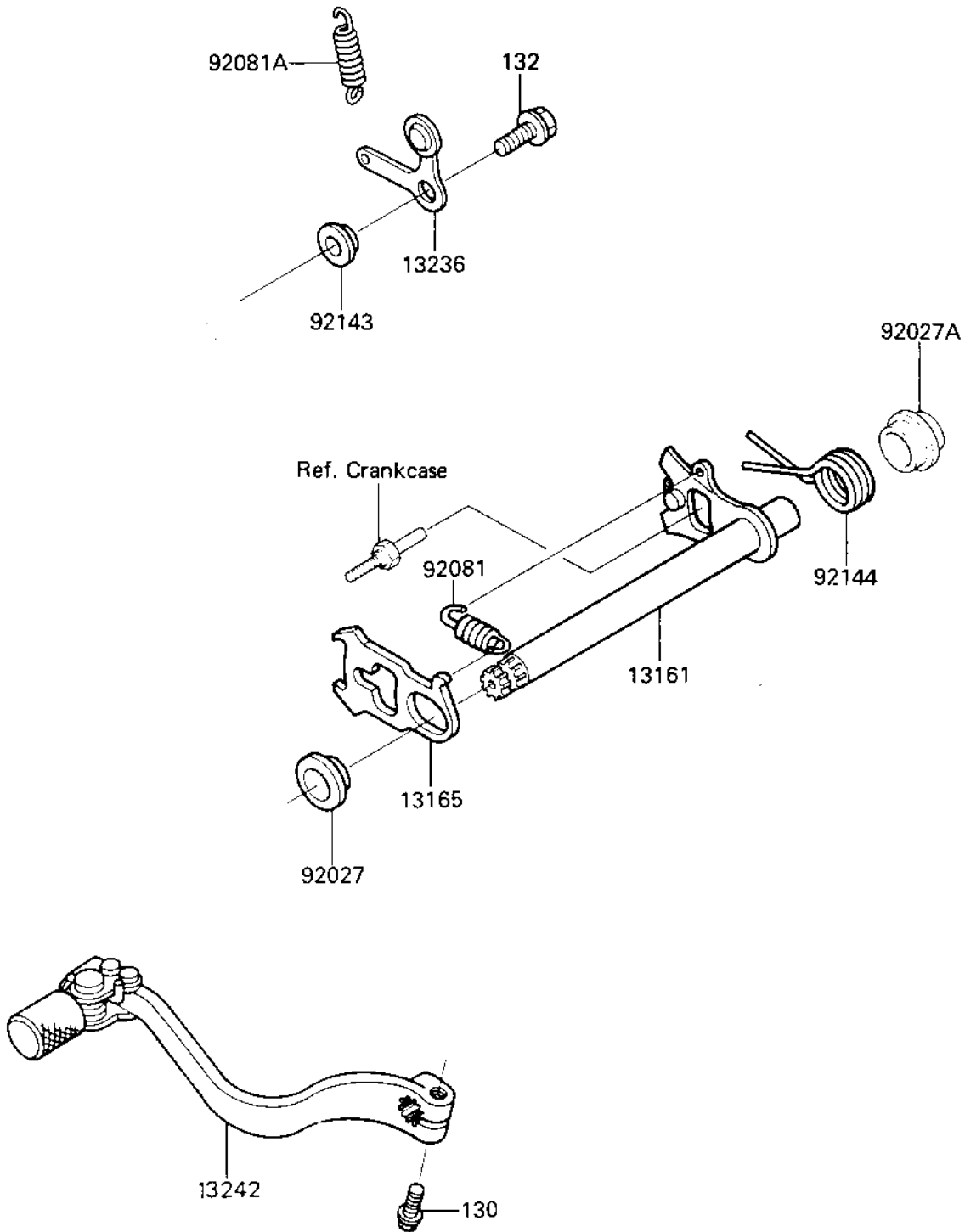


1987 KX250 PARTS DIAGRAM

GEAR CHANGE MECHANISM

E1370-0175



1987 KX250 PARTS LIST

GEAR CHANGE MECHANISM

| ITEM NAME | PART NUMBER | QUANTITY |
|-------------------------------------|-------------|----------|
| LEVER-COMP-CHANGE SHA (Ref # 13161) | 13161-1145 | 1 |
| PAWL,CHANGE LEVER (Ref # 13165) | 13165-1122 | 1 |
| LEVER-COMP,POSITION (Ref # 13236) | 13236-1155 | 1 |
| LEVER-ASSY-CHANGE,PED (Ref # 13242) | 13242-1226 | 1 |
| COLLAR,CHANGE SHAFT,L (Ref # 92027) | 92027-1512 | 1 |
| COLLAR,RETURN SPRING (Ref # 92027A) | 92027-1682 | 1 |
| SPRING-CHANGE LEVER (Ref # 92081) | 92081-076 | 1 |
| SPRING,CHNG DRUM LEV (Ref # 92081A) | 92083-012 | 1 |
| COLLAR (Ref # 92143) | 92143-1055 | 1 |
| SPRING,CHANGE SHAFT R (Ref # 92144) | 92144-1142 | 1 |
| BOLT,FLANGED,6X25 (Ref # 130) | 130G0625 | 1 |
| BOLT-FLANGED-SMALL (Ref # 132) | 132G0616 | 1 |