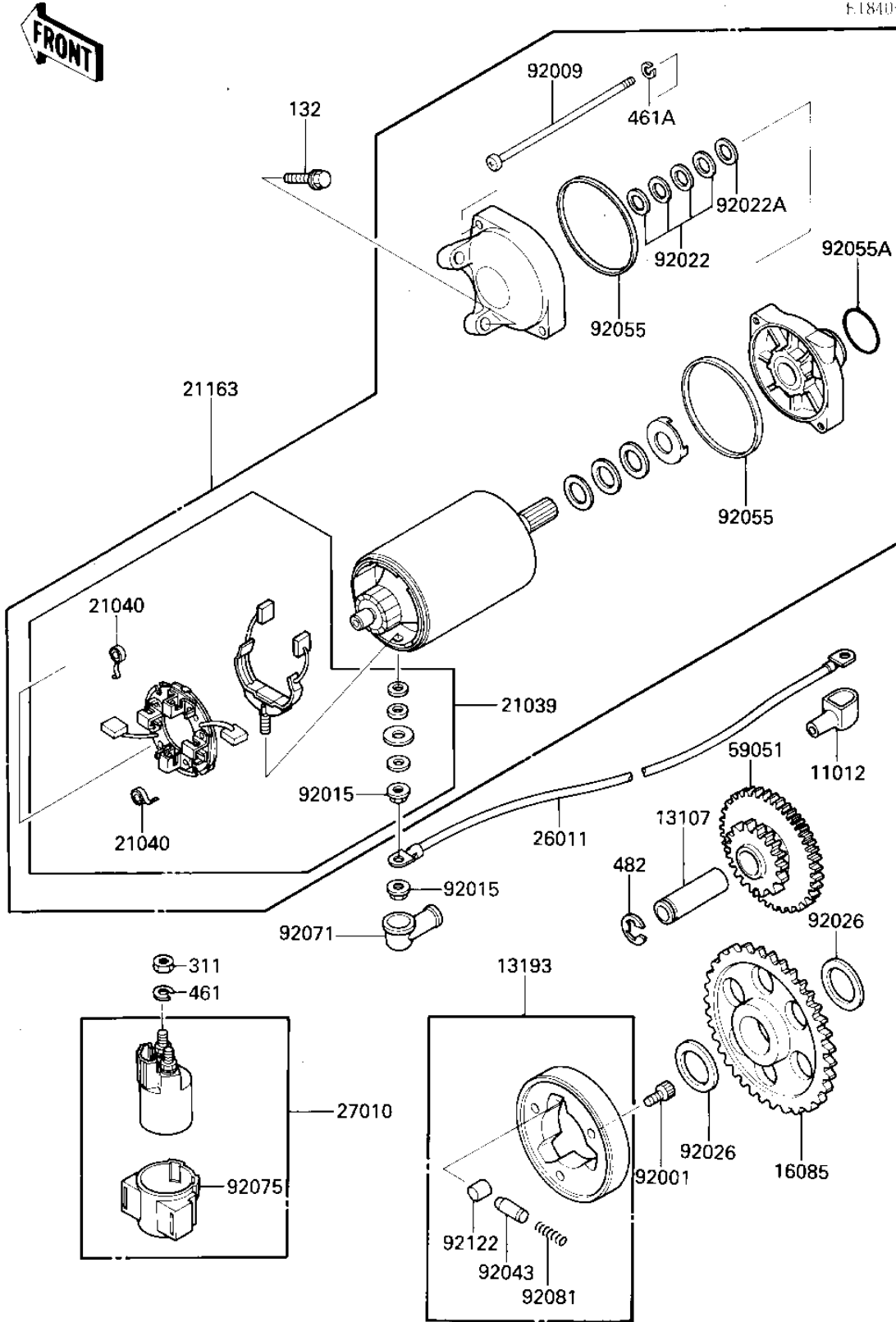


# 1987 Ninja® 600 PARTS DIAGRAM

## STARTER MOTOR/STARTER CLUTCH

E.1840-0071



R:  
N:

- 1
- 1
- 1
- 1
- 2
- 2
- 2
- 2
- 5
- 9
- 9
- 9
- 9
- 9
- 9
- 9
- 9
- 9
- 9

# 1987 Ninja® 600 PARTS LIST

## STARTER MOTOR/STARTER CLUTCH

| ITEM NAME                           | PART NUMBER | QUANTITY |
|-------------------------------------|-------------|----------|
| CAP,TERMINAL (Ref # 11012)          | 11012-1354  | 1        |
| SHAFT,IDLE GEAR (Ref # 13107)       | 13107-1144  | 1        |
| CLUTCH ASSY,ONEWAY (Ref # 13193)    | 13193-1002  | 1        |
| GEAR,ONEWAY CLUTCH (Ref # 16085)    | 16085-1030  | 1        |
| BRUSH,CARBON (Ref # 21039)          | 21039-1053  | 1        |
| SPRING-BRUSH (Ref # 21040)          | 21040-1003  | 4        |
| STARTER-ELECTRIC (Ref # 21163)      | 21163-1072  | 1        |
| WIRE-LEAD,STARTER MTR (Ref # 26011) | 26011-1251  | 1        |
| SWITCH,MAGNETIC (Ref # 27010)       | 27010-1209  | 1        |
| GEAR-SPUR,IDLE (Ref # 59051)        | 59051-1138  | 1        |
| BOLT,SOCKET,8X10 (Ref # 92001)      | 92001-1424  | 3        |
| SCREW (Ref # 92009)                 | 92009-1397  | 2        |
| NUT,6MM (Ref # 92015)               | 92015-1476  | 2        |
| WASHER,THRUST,0.2T (Ref # 92022)    | 21025-011   | 4        |
| WASHER,THRUST,0.8T (Ref # 92022A)   | 92022-1132  | 1        |
| SPACER,25X36X3.2 (Ref # 92026)      | 92026-1025  | 2        |
| PIN (Ref # 92043)                   | 92043-132   | 3        |
| "O" RING,STARTER MOTR (Ref # 92055) | 92055-1086  | 2        |
| RING-O (Ref # 92055A)               | 92055-1276  | 1        |
| GROMMET,CORD (Ref # 92071)          | 21017-017   | 1        |
| DAMPER MAG SWITCH SHK (Ref # 92075) | 21064-002   | 1        |
| SPRING,COIL (Ref # 92081)           | 92081-159   | 3        |
| ROLLER (Ref # 92122)                | 92122-006   | 3        |
| BOLT-FLANGED-SMALL (Ref # 132)      | 132J0625    | 2        |
| NUT 6MM (Ref # 311)                 | 311B0600    | 2        |
| WASHER SPRING 6MM (Ref # 461)       | 461F0600    | 2        |
| WASHER-SPRING,5MM,BLA (Ref # 461A)  | 461K0500    | 2        |
| CIRCLIP-TYPE-E (Ref # 482)          | 482J0300    | 1        |