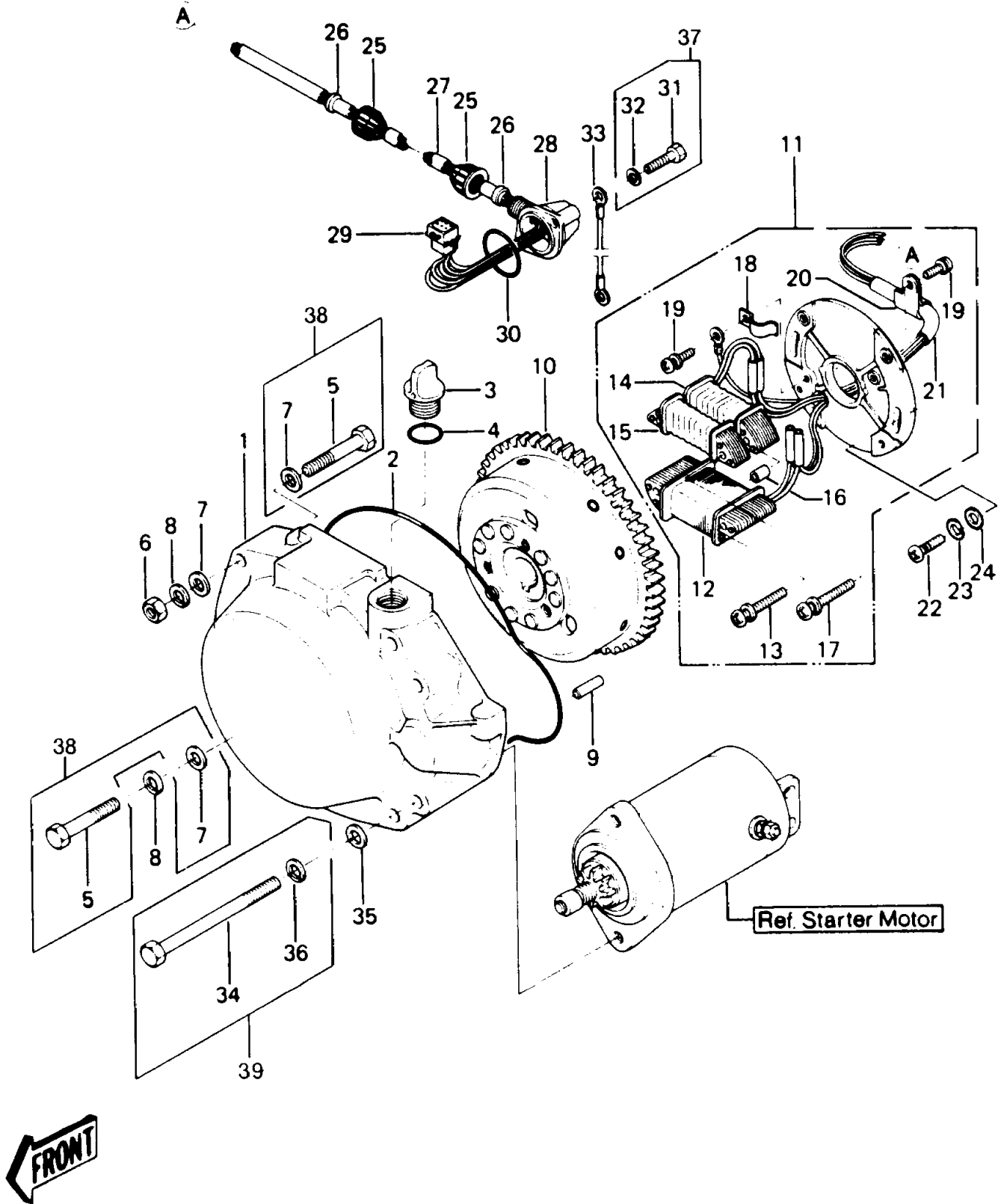


1988 JS440 PARTS DIAGRAM

Generator(JS440-A11)



1988 JS440 PARTS LIST

Generator(JS440-A11)

ITEM NAME	PART NUMBER	QUANTITY
FLYWHEEL (Ref # 10)	21050-3021	1
STATOR (Ref # 11)	21003-3012	1
COIL-CHARGING (Ref # 12)	59031-3002	1
SCREW,5X34 (Ref # 13)	92011-530	2
COIL-EXCITING (Ref # 14)	21049-3007	1
COIL-PULSING (Ref # 15)	59026-3008	1
COLLAR (Ref # 16)	92027-3014	2
SCREW,5X38 (Ref # 17)	92009-3008	2
CLAMP (Ref # 18)	92037-520	1
SCREW,4X8 (Ref # 19)	92011-560	2
CLAMP (Ref # 20)	92037-547	1
HARNESS,WIRING (Ref # 21)	26001-3006	1
SCREW-PAN-CROS (Ref # 22)	220B0520	2
WASHER-SPRING,5MM (Ref # 23)	461F0500	2
WASHER (Ref # 24)	92022-544	2
CAP (Ref # 25)	11012-3012	2
GROMMET (Ref # 26)	92071-3001	2
TUBE,10X345 (Ref # 27)	92059-3032	1
CAP. (Ref # 28)	59176-517-YR	1
CONNECTOR-CORD (Ref # 29)	59221-506	1
RING-O (Ref # 30)	92055-520	1
WIRE-LEAD,BLACK (Ref # 33)	26011-3006	1
BOLT,8X80 (Ref # 34)	92001-3011	2
WASHER-PLAIN-SMALL,8MM (Ref # 35)	410S0800	2
WASHER-SPRING,8MM (Ref # 36)	461S0800	2
BOLT,6X35 (Ref # 37)	92002-3715	2
COVER,GENERATOR (Ref # 1)	59036-565-YR	1
RING-O (Ref # 2)	92055-521	1
BREATHER-BRAKE (Ref # 3)	43056-502	1

1988 JS440 PARTS LIST

Generator(JS440-A11)

ITEM NAME	PART NUMBER	QUANTITY
RING-O (Ref # 4)	92055-515	1
BOLT,8X50 (Ref # 5)	110R0850	4
NUT-HEX,8MM (Ref # 6)	311R0800	2
WASHER-PLAIN-SMALL,8MM (Ref # 7)	410S0800	6
WASHER-SPRING,8MM (Ref # 8)	461S0800	4
PIN-DOWEL (Ref # 9)	551R0612	2