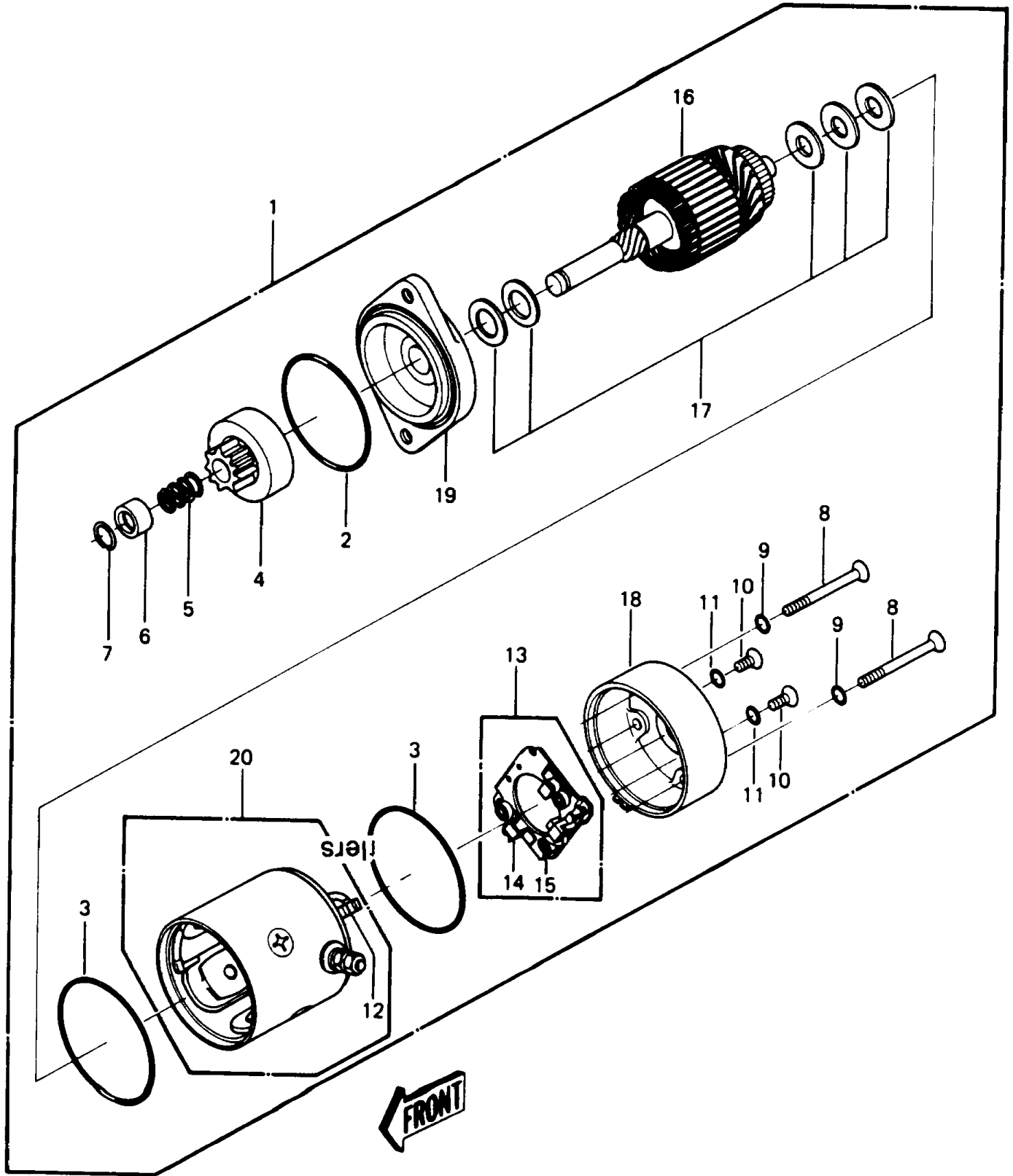


1988 JS440 PARTS DIAGRAM

Starter Motor



1988 JS440 PARTS LIST

Starter Motor

| ITEM NAME | PART NUMBER | QUANTITY |
|---------------------------------|---------------|----------|
| SCREW,4X8 (Ref # 10) | 92011-550 | 2 |
| O RING,5MM (Ref # 11) | 670B1505 | 2 |
| BRUSH,(+) (Ref # 12) | 21039-3003 | 2 |
| HOLDER-ASSY,BRUSH (Ref # 13) | 14079-3002 | 1 |
| BRUSH,(-) (Ref # 14) | 21039-3004 | 1 |
| SPRING,BRUSH (Ref # 15) | 92081-540 | 3 |
| ARMATURE (Ref # 16) | 21080-3001 | 1 |
| WASHER,SET (Ref # 17) | 92022-3044 | 1 |
| COVER,RR (Ref # 18) | 14025-3027 | 1 |
| COVER,FR (Ref # 19) | 14025-3028 | 1 |
| YOKE (Ref # 20) | 49117-3002 | 1 |
| STARTER-ELECTRIC (Ref # 1) | 21163-3003-YR | 1 |
| RING-O (Ref # 2) | 92055-516 | 1 |
| RING-O (Ref # 3) | 92055-517 | 2 |
| GEAR-SPUR (Ref # 4) | 59051-3005 | 1 |
| SPRING,RETURN (Ref # 5) | 92081-541 | 1 |
| COLLAR,STOPPER,PINION (Ref # 6) | 92027-513 | 1 |
| RING-SNAP (Ref # 7) | 92036-517 | 1 |
| SCREW,6X107 (Ref # 8) | 92011-549 | 2 |
| O RING,6MM (Ref # 9) | 670B1506 | 2 |