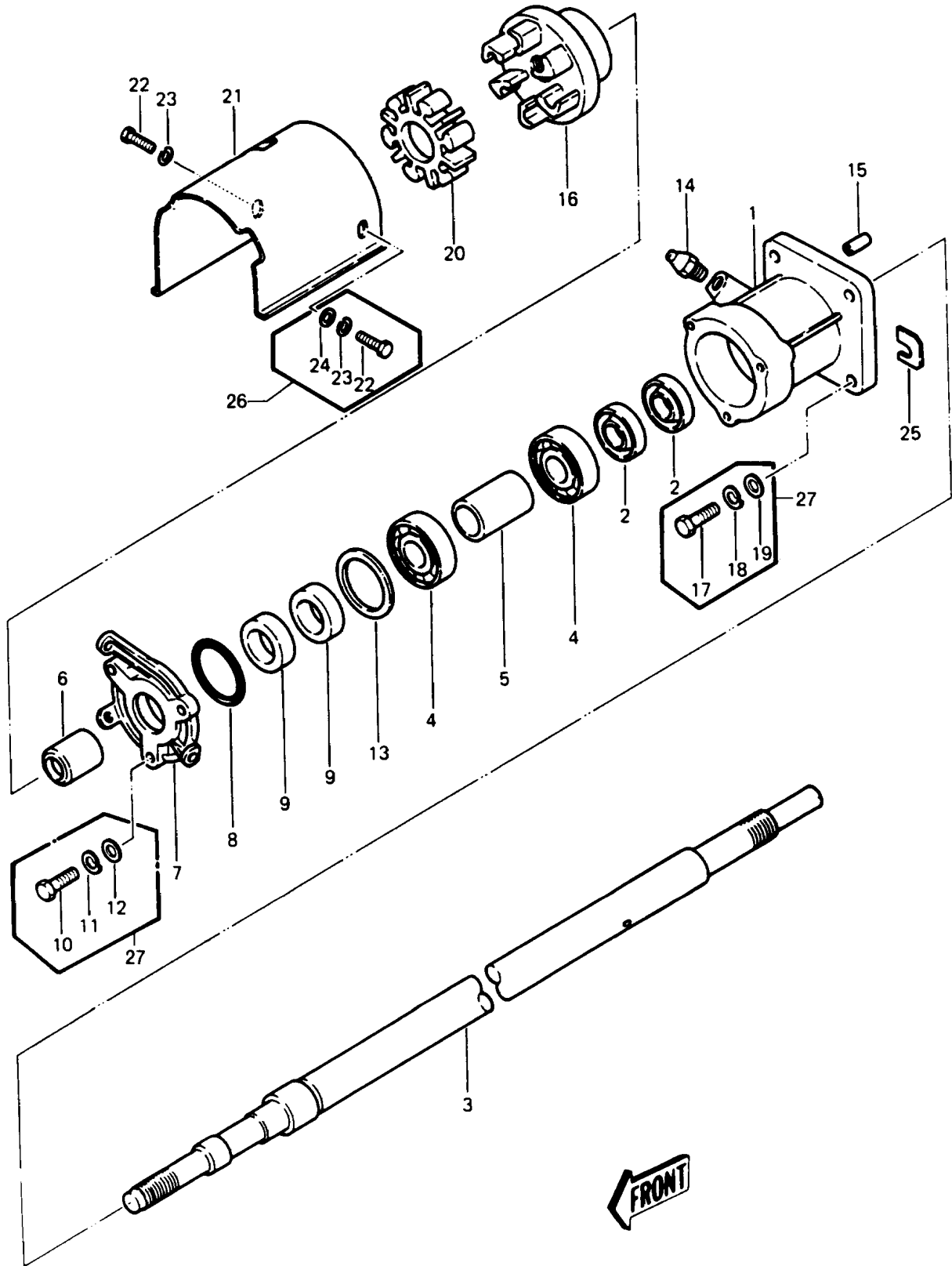


1990 JS440 PARTS DIAGRAM

DRIVE SHAFT



1990 JS440 PARTS LIST

DRIVE SHAFT

| ITEM NAME | PART NUMBER | QUANTITY |
|--------------------------------|-------------|----------|
| SHIM,T=0.3 (Ref # 13A) | 92025-503 | AR |
| SHIM,T=0.15 (Ref # 13) | 92025-502 | AR |
| FITTING,GREASE (Ref # 14) | 92005-501 | 1 |
| PIN-DOWEL (Ref # 15) | 551R0612 | 2 |
| COUPLING (Ref # 16A) | 42034-3706 | 1 |
| DAMPER,COUPLING (Ref # 20) | 92075-520 | 1 |
| COVER,COUPLING (Ref # 21) | 59036-567 | 1 |
| SHIM,T=0.5MM (Ref # 25A) | 92025-3702 | AR |
| SHIM,T=1.0MM (Ref # 25B) | 92025-3703 | AR |
| SHIM,T=1.5MM (Ref # 25C) | 92025-3704 | AR |
| SHIM,T=0.3MM (Ref # 25) | 92025-3701 | AR |
| BOLT,6X16 (Ref # 26) | 92150-3714 | 3 |
| BOLT-WSP-SMALL,8X25 (Ref # 27) | 155R0825 | 7 |
| HOUSING-BEARING (Ref # 1) | 41046-502 | 1 |
| SEAL-OIL,AC1799EX (Ref # 2) | 92050-501 | 2 |
| SHAFT,DRIVE (Ref # 3) | 59111-515 | 1 |
| BEARING-BALL,#6305C3 (Ref # 4) | 601B6305 | 2 |
| COLLAR (Ref # 5) | 92027-502 | 1 |
| SLEEVE,BEARING (Ref # 6) | 42036-501 | 1 |
| COVER,BEARING (Ref # 7) | 14025-3008 | 1 |
| RING-O (Ref # 8) | 92055-501 | 1 |
| SEAL-OIL,AC1799EX (Ref # 9) | 92050-501 | 2 |