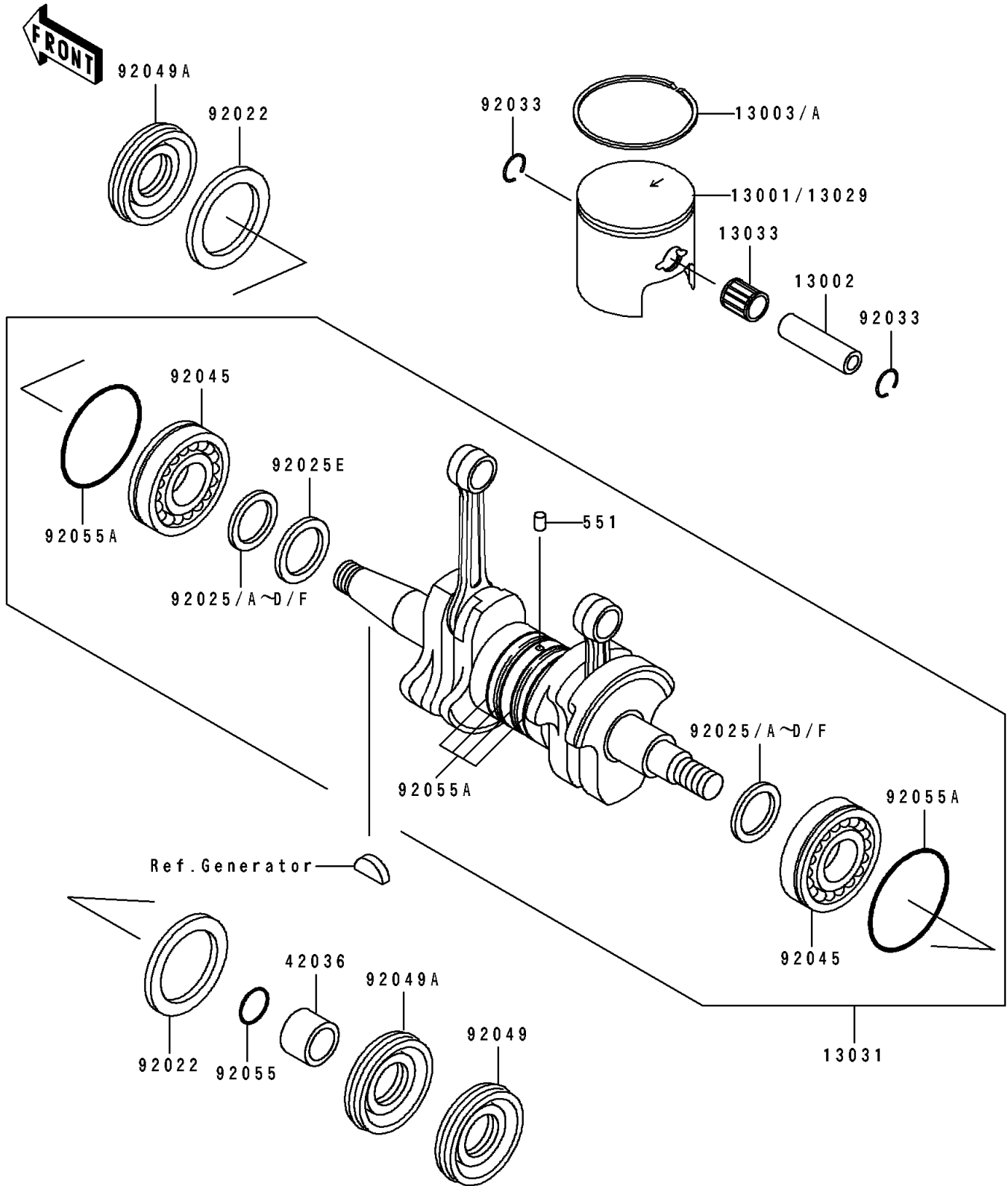


# 1991 JS440 PARTS DIAGRAM

Crankshaft/Piston

E 1320



# 1991 JS440 PARTS LIST

## Crankshaft/Piston

ITEM NAME	PART NUMBER	QUANTITY
PISTON-ENGINE (Ref # 13001)	13001-3017	2
PIN-PISTON (Ref # 13002)	13002-504	2
RING-PISTON TOP (Ref # 13003)	13003-3014	2
RING-PISTON TOP,O/S 0.50MM (Ref # 13003A)	13003-3015	2
PISTON-ENGINE L,O/S 0.50MM (Ref # 13029)	13029-3001	2
CRANKSHAFT-COMP (Ref # 13031)	13031-3011	1
BEARING-NEEDLE,KBK16X20X22.8X6 (Ref # 13033)	13033-3005	2
SLEEVE,CRANKSHAFT OUT (Ref # 42036)	42036-3007	1
WASHER,CRANK,RH (Ref # 92022)	92022-3021	2
SHIM,T=0.1 (Ref # 92025)	92025-513	AR
SHIM,T=0.2 (Ref # 92025A)	92025-518	AR
SHIM,T=0.3 (Ref # 92025B)	92025-523	AR
SHIM,T=0.4 (Ref # 92025C)	92025-527	AR
SHIM,T=0.5 (Ref # 92025D)	92025-530	AR
SHIM,T=1.0MM (Ref # 92025E)	92025-532	1
SHIM,T=0.6 (Ref # 92025F)	92025-533	AR
RING-SNAP (Ref # 92033)	92036-507	4
BEARING-BALL,6206NC3 (Ref # 92045)	92045-505	2
SEAL-OIL,OIL,TCY306210 (Ref # 92049)	92049-3005	1
SEAL-OIL,OIL,DCY30629 (Ref # 92049A)	92049-3006	2
RING-O,22MM (Ref # 92055)	92055-3009	1
RING-O (Ref # 92055A)	92055-504	6
PIN-DOWEL (Ref # 551)	551A0410	1