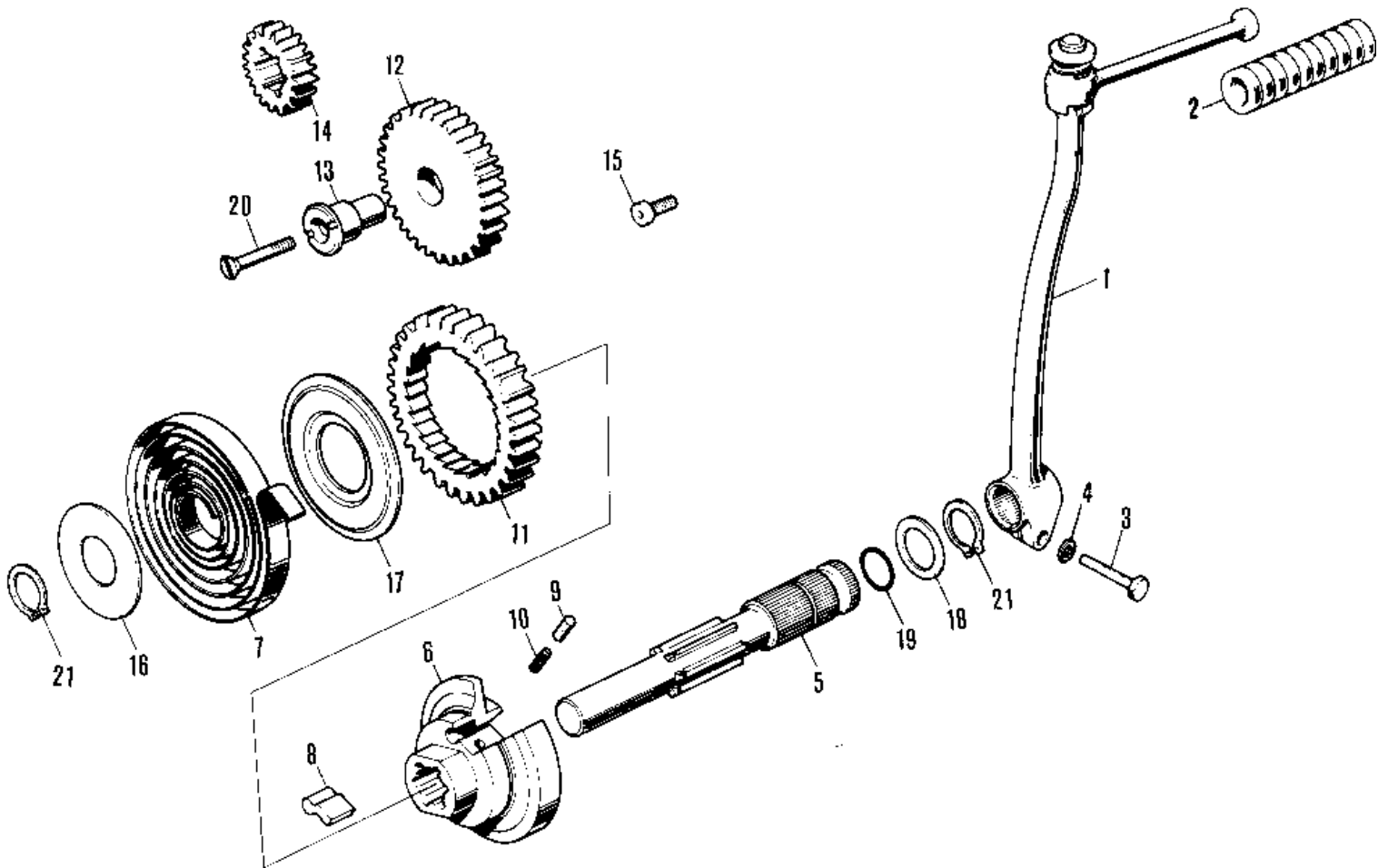


1972 MT1A PARTS DIAGRAM

KICKSTARTER MECHANISM ('71-'75)



1972 MT1A PARTS LIST

KICKSTARTER MECHANISM (71-75)

| ITEM NAME | PART NUMBER | QUANTITY |
|----------------------------------|-------------|----------|
| PEDAL-KICKSTARTER (Ref # 1) | 13058-031 | |
| RUBBER-KICK PEDAL (Ref # 2) | 13063-005 | |
| BOLT-UPSET (Ref # 3) | 112G0625 | |
| WASHER SPRING 6MM (Ref # 4) | 461F0600 | |
| SHAFT-KICKSTARTER (Ref # 5) | 13066-018 | |
| DRUM KK (Ref # 6) | 13067-001 | |
| KICKSTARTER SPRING (Ref # 7) | 92082-001 | |
| PAWL (Ref # 8) | 13069-001 | |
| PIN KICKSTARTER PAWL (Ref # 9) | 92042-001 | |
| SPRING KICK PAWL (Ref # 10) | 92081-022 | |
| GEAR-KICKSTARTER (Ref # 11) | 13068-003 | |
| IDLE GEAR (Ref # 12) | 13073-002 | |
| SHAFT-IDLE GEAR (Ref # 13) | 13074-002 | |
| PINION-KICKSTARTER (Ref # 14) | 13075-003 | |
| STOPPER-KICKSTARTER (Ref # 15) | 13072-001 | |
| PLATE-KICK SPRG HLDER (Ref # 16) | 13071-001 | |
| PLATE-KICK GEAR HLDER (Ref # 17) | 13071-002 | |
| WASHER,16MM (Ref # 18) | 92022-006 | |
| "O" RING,16MM (Ref # 19) | 92055-001 | |
| SCREW,CNTSNK,5X30.5 (Ref # 20) | 92010-002 | |
| CIRCLIP 16MM (Ref # 21) | 480J1600 | |