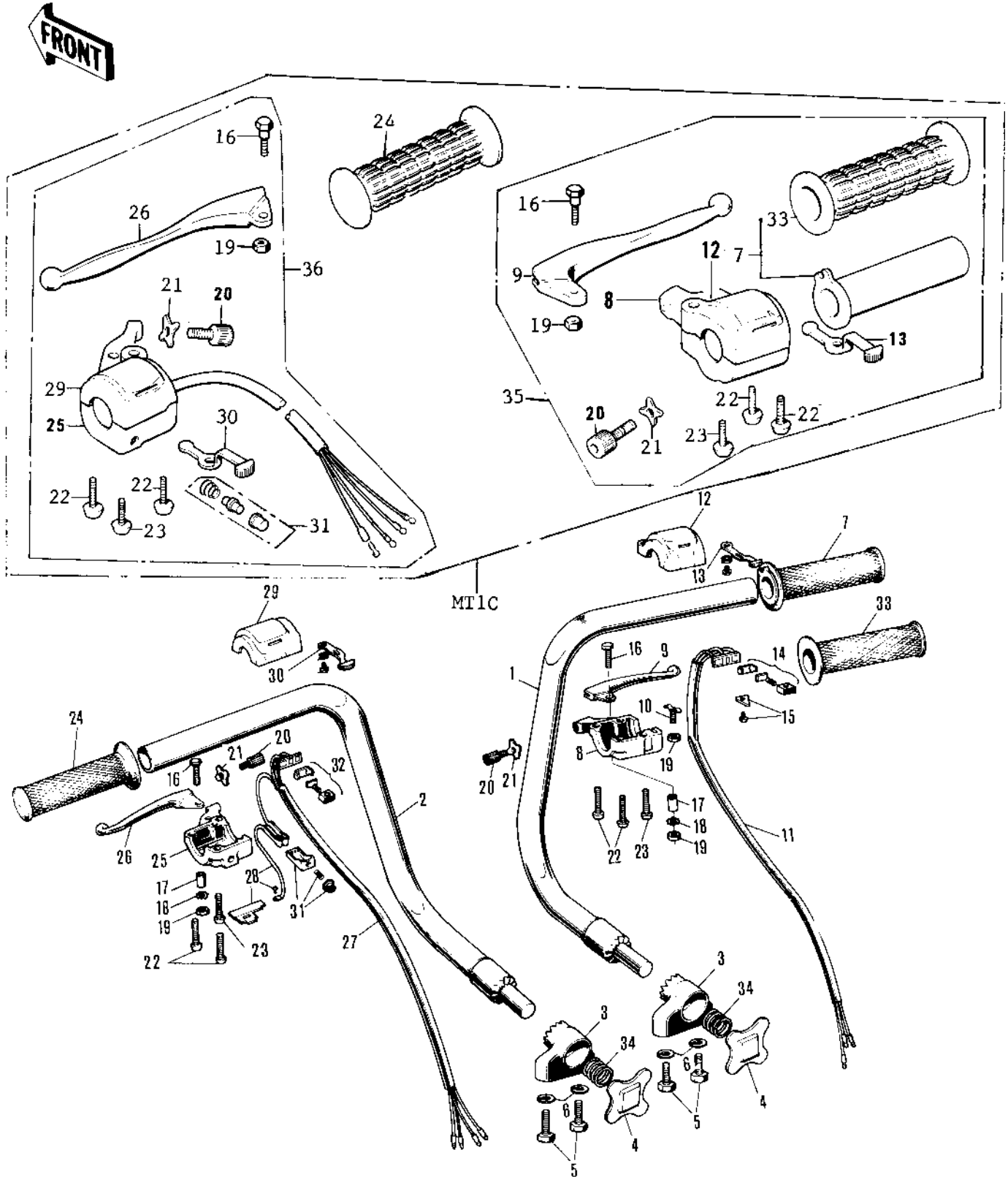


1974 MT1B PARTS DIAGRAM

HANDLEBAR (71-75)



1974 MT1B PARTS LIST

HANDLEBAR ('71-'75)

ITEM NAME	PART NUMBER	QUANTITY
HANDLEBAR,RH (Ref # 1)	46007-010	
HANDLEBAR,LH (Ref # 2)	46007-011	
HOLDER-HANDLEBAR (Ref # 3)	46012-009	
KNOB-HANDLEBAR HOLDER (Ref # 4)	46129-001	
BOLT HEX HEAD 10X18 (Ref # 5)	113B1018	
WASHER SPRING 10MM (Ref # 6)	461F1000	
GRIP-ASSY,RH (Ref # 7-21,2)	46017-1071	
GRIP ASSY THROTTLE (Ref # 7)	46019-005	
GRIP ASSY,THROTTLE (Ref # 7)	46019-024	
CASE R.H SWITCH LOWER (Ref # 8)	46022-012	
CASE,R.H LOWER (Ref # 8)	46022-017	
LEVER FRONT BRAKE (Ref # 9)	46058-004	
SPRING THROTTLE GRIP (Ref # 10)	46024-002	
WIRING HARNESS R.H SW (Ref # 11)	46032-010	
GRIP-ASSY,RH (Ref # 12)	46017-1071	
CASE,R.H. UPPER (Ref # 12)	46040-015	
KNOB ASSY R.H SWITCH (Ref # 13)	46043-002	
SLIDE BLOCK AY R.H SW (Ref # 14)	46045-004	
HOLDER WIRING HARNESS (Ref # 15)	46085-012	
BOLT HEX HEAD 5X20 (Ref # 16)	92007-020	
BOLT,HEX HEAD,5X22 (Ref # 16)	92007-046	
COLLAR LEVER (Ref # 17)	46059-011	
WASHER LOCK 5MM (Ref # 18)	464H0500	
NUT 5MM (Ref # 19)	312B0500A	
NUT-LOCK,5MM (Ref # 19)	92019-014	
SCREW,CABLE ADJUST (Ref # 20)	46055-010	
NUT LOCK ADJUST SCREW (Ref # 21)	46056-001	
SCREW PAN HEAD 5X20 (Ref # 22)	220B0520A	
SCREW PAN HEAD 5X18 (Ref # 23)	220B0518A	

1974 MT1B PARTS LIST

HANDLEBAR ('71-'75)

ITEM NAME	PART NUMBER	QUANTITY
GRIP ASSY L.H (Ref # 15-32)	46074-017	
RUBBER L.H GRIP (Ref # 24)	46075-007	
RUBBER,L.H GRIP (Ref # 24)	46075-020	
CASE L.H SWITCH LOWER (Ref # 25)	46077-008	
CASE, L.H. LOWER (Ref # 25)	46077-026	
LEVER-CLUTCH (Ref # 26)	46092-015	
LEVER-CLUTCH (Ref # 26)	46092-015	
WIRING HARNESS L.H SW (Ref # 27)	46082-009	
HOLDER L.H SWITCH (Ref # 28)	46085-008	
CASE L.H SWITCH UPPER (Ref # 29)	46086-007	
CASE,L.H UPPER (Ref # 29)	46086-025	
KNOB ASSY L.H SWITCH (Ref # 30)	46088-001	
SWITCH ASSY LH BUTTON (Ref # 31)	46078-003	
SLIDE BLOCK AY L.H SW (Ref # 32)	46089-002	
RUBBER R.H GRIP (Ref # 33)	46061-009	
RUBBER,R.H.GRIP (Ref # 33)	46061-015	
SPRING (Ref # 34)	92081-078	
SPRING (Ref # 34)	92081-090	
GRIP ASSY,R.H (Ref # 35)	46017-077	
GRIP ASSY,L.H (Ref # 36)	46074-092	