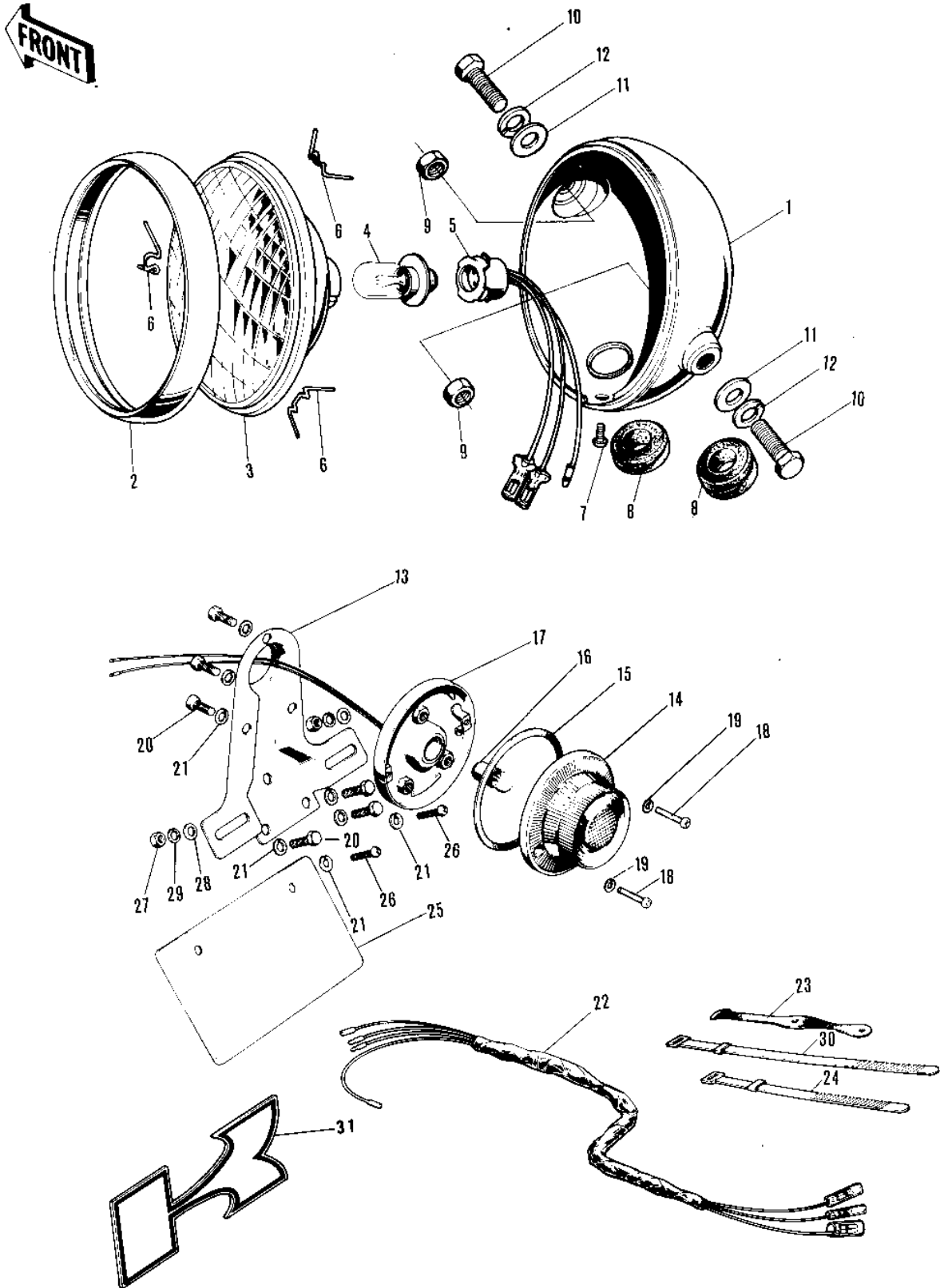


1975 MT1C PARTS DIAGRAM

HEADLIGHT/TAILLIGHT/CHASSIS ELECTRICAL E



1975 MT1C PARTS LIST

HEADLIGHT/TAILLIGHT/CHASSIS ELECTRICAL E

| ITEM NAME | PART NUMBER | QUANTITY |
|----------------------------------|---------------|----------|
| BODY,HD LIGHT,FL BLCK (Ref # 1) | 23005-1006-21 | |
| LAMP UNIT-HEAD (Ref # 2 7) | 23004-023 | |
| RIM,HEAD LAMP (Ref # 2) | 23006-043 | |
| LENS UNIT-HEAD LAMP (Ref # 3) | 23007-010 | |
| BULB 6V 25/25W (Ref # 4) | 92069-031 | |
| SOCKET HEAD LAMP (Ref # 5) | 23008-009 | |
| CLAMP,HEAD LAMP LENS (Ref # 6) | 23009-014 | |
| SCREW OVL CNTSNK 5X8 (Ref # 7) | 222E0508A | |
| GROMMET WIRING HARNES (Ref # 8) | 23023-007 | |
| NUT 10MM (Ref # 9) | 92016-027 | |
| BOLT-UPSET,10X20 (Ref # 10) | 112B1020 | |
| WASHER PLAIN 10MM (Ref # 11) | 411B1000 | |
| WASHER SPRING 10MM (Ref # 12) | 461F1000 | |
| BKT-TAIL LAMP,BLACK (Ref # 13) | 35028-005-10 | |
| LAMP ASSY-TAIL (Ref # 14 19) | 23025-035 | |
| LENS-TAIL LAMP (Ref # 14) | 23026-009 | |
| GASKET-TAIL LAMP LENS (Ref # 15) | 23028-012 | |
| BULB 6V 10/3W (Ref # 16) | 92069-020 | |
| SOCKET-TAIL LAMP (Ref # 17) | 23027-025 | |
| SCREW-PAN HEAD,4X10 (Ref # 18) | 220E0410A | |
| WASHER SPRING 4MM (Ref # 19) | 461F0400 | |
| BOLT-UPSET,6X12 (Ref # 20) | 112G0612 | |
| WASHER SPRING 6MM (Ref # 21) | 461F0600 | |
| WIRING HARNESS,MAIN (Ref # 22) | 26001-057 | |
| BAND RUBBER (Ref # 23) | 92072-018 | |
| BAND,SHORT (Ref # 24) | 92072-030 | |
| BRACKET-LICENCE PLATE (Ref # 25) | 35027-006 | |
| SCREW PAN HEAD 6X12 (Ref # 26) | 220B0612 | |
| NUT 6MM (Ref # 27) | 311B0600 | |

1975 MT1C PARTS LIST

HEADLIGHT/TAILLIGHT/CHASSIS ELECTRICAL E

| ITEM NAME | PART NUMBER | QUANTITY |
|------------------------------------|-------------|----------|
| WASHER PLAIN 6MM (Ref # 28) | 410B0600 | |
| WASHER SPRING 6MM (Ref # 29) | 461F0600 | |
| BAND, LONG (Ref # 30) | 92072-032 | |
| EMBLEM, LICENSE PLT BKT (Ref # 31) | 56018-176 | |