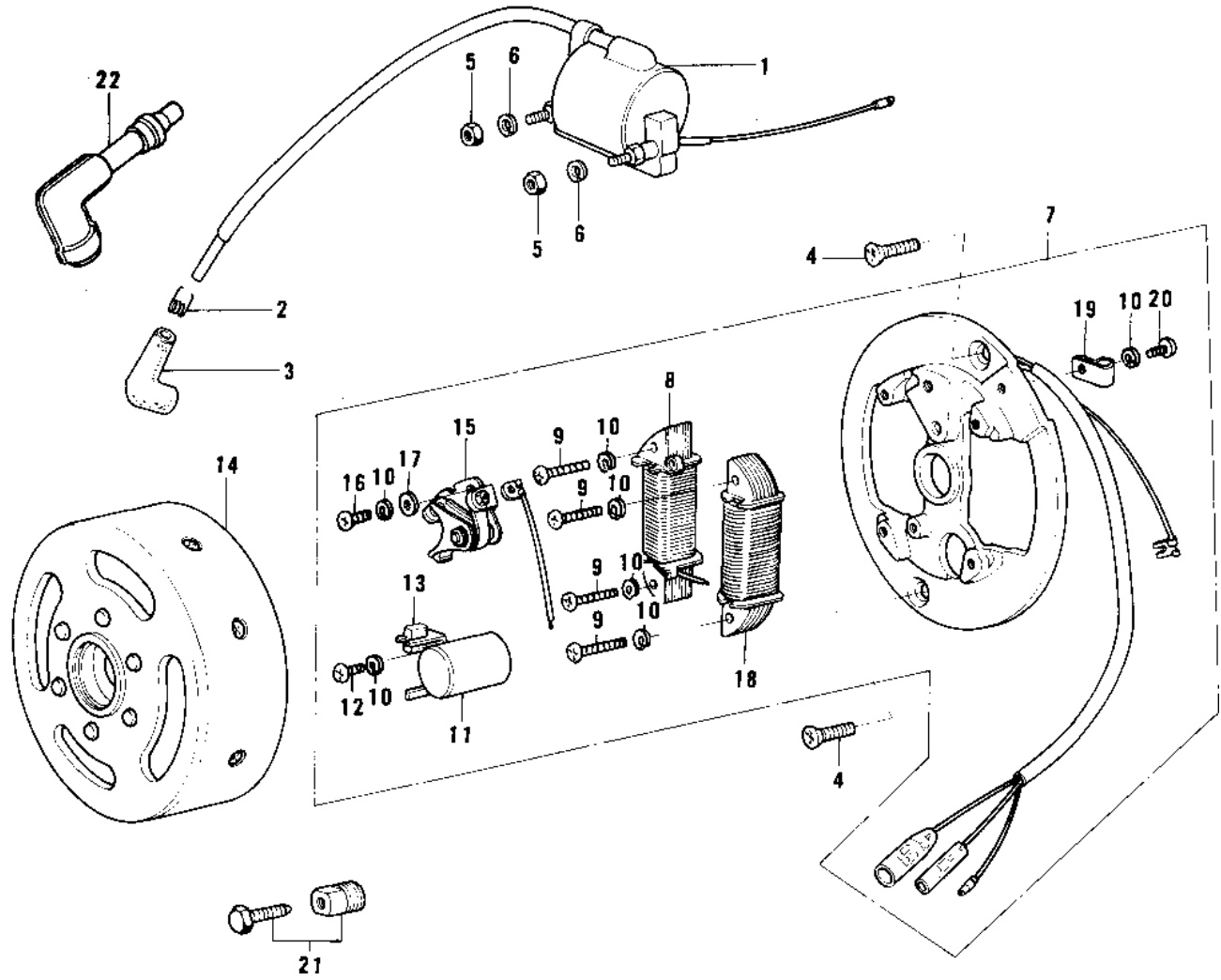


1974 MT1B PARTS DIAGRAM

IGNITION/GENERATOR ('76-'80)



1974 MT1B PARTS LIST

IGNITION/GENERATOR ('76-'80)

| ITEM NAME | PART NUMBER | QUANTITY |
|---------------------------------|-------------|----------|
| COIL-IGNITION (Ref # 1) | 21121-043 | |
| SPRING-SPARK PLUG CAP (Ref # 2) | 92101-001 | |
| CAP SPARK PLUG (Ref # 3) | 21130-009 | |
| SCREW CNTSNK HD 6X16 (Ref # 4) | 221B0616 | |
| NUT 6MM (Ref # 5) | 311B0600 | |
| WASHER SPRING 6MM (Ref # 6) | 461F0600 | |
| STATOR ASSY. (Ref # 7) | 21003-031 | |
| COIL,PRIMARY (Ref # 8) | 21047-026 | |
| COIL A,PRIMARY IGNITI (Ref # 8) | 21049-1002 | |
| SCREW PAN HEAD 4X25 (Ref # 9) | 220B0425 | |
| WASHER SPRING 4MM (Ref # 10) | 461F0400 | |
| CONDENSER (Ref # 11) | 21013-033 | |
| CONDENSER (Ref # 11) | 21013-1001 | |
| SCREW PAN HEAD 4X10 (Ref # 12) | 220B0410 | |
| FELT OIL (Ref # 13) | 21019-005 | |
| FLYWHEEL (Ref # 14) | 21050-021 | |
| BREAKER,CONTACT (Ref # 15) | 21008-024 | |
| BREAKER ASSY,CONTACT (Ref # 15) | 21008-1004 | |
| SCREW PAN HEAD 4X10 (Ref # 16) | 220B0410 | |
| WASHER PLAIN 4MM (Ref # 17) | 410B0400 | |
| COIL,LIGHTING (Ref # 18) | 21047-027 | |
| CLAMP,LEAD WIRE (Ref # 19) | 21037-005 | |
| SCREW PAN HEAD 4X6 (Ref # 20) | 220B0406 | |
| 57001-252 (Canada) (Ref # 21) | 56019-033 | |
| CAP,SPARK PLUG (Ref # 22) | 21160-005 | |