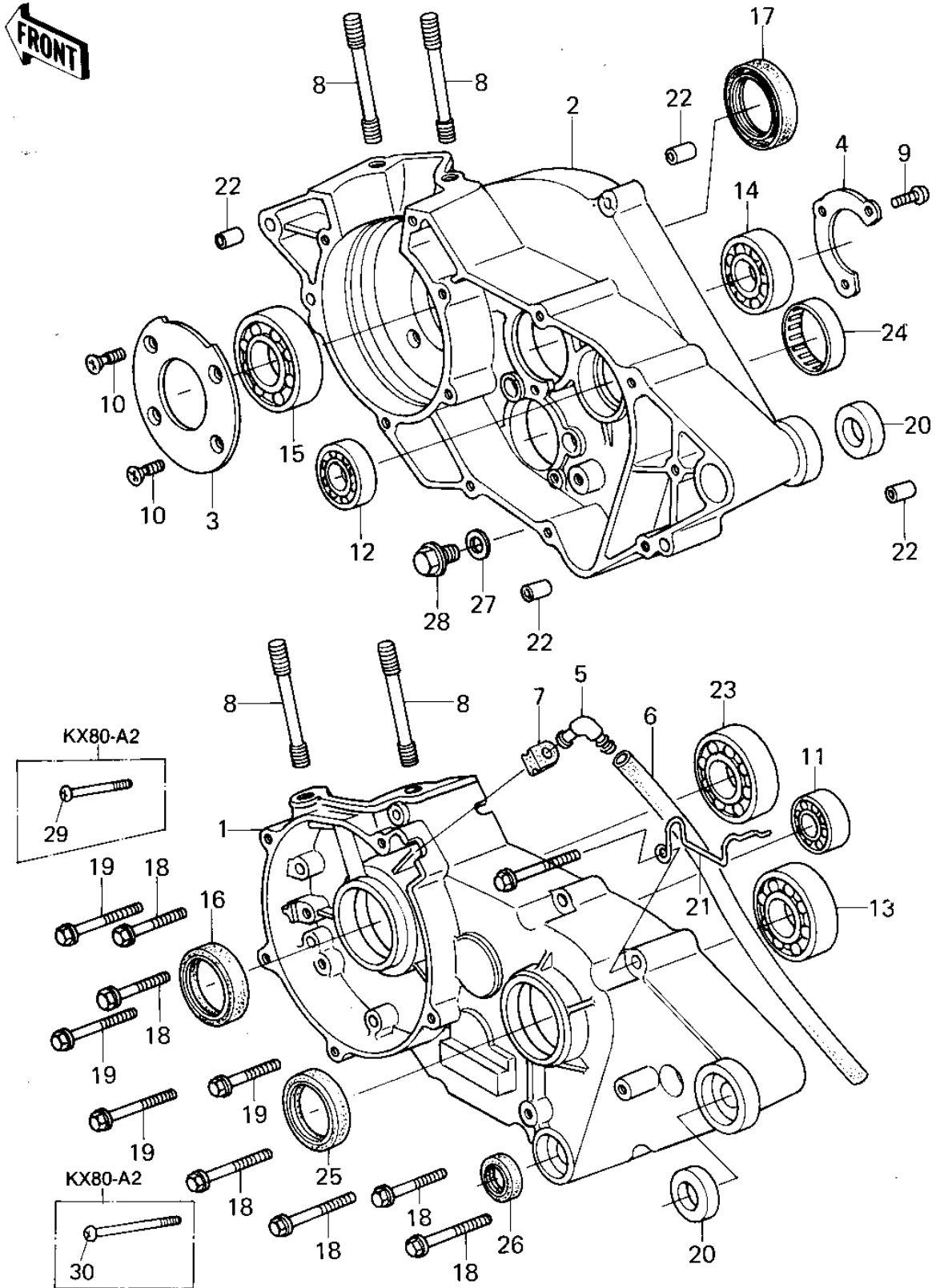


1979 KX80 PARTS DIAGRAM

CRANKCASE



1979 KX80 PARTS LIST

CRANKCASE

ITEM NAME	PART NUMBER	QUANTITY
CRANKCASE,L.H. (Ref # 1)	14002-1059	1
CRANKCASE,L.H,F.BLACK (Ref # 1)	14002-1067	1
CRANKCASE,R.H. (Ref # 2)	14002-1060	1
CRANKCASE,R.H,F.BLACK (Ref # 2)	14002-1068	1
HOLDER CRANKSHAFT BRG (Ref # 3)	14014-017	1
PLATE,POSITION,DRIVE (Ref # 4)	14014-1010	1
BREATHER ASSY (Ref # 5)	14069-1001	1
TUBE,6X9X750 (Ref # 6)	92059-1372	1
GROMMET (Ref # 7)	92071-042	1
STUD,8X105 (Ref # 8)	172G08105	4
STUD-8X110 (Ref # 8)	172G08110	4
SCREW PAN HEAD 6X14 (Ref # 9)	220B0614	3
SCREW CNTSNK HD 6X16 (Ref # 10)	221B0616	4
BEARING-BALL (Ref # 11)	92045-1235	1
BEARING BALL #6002 (Ref # 12)	601B6002	1
BEARING BALL #6004 (Ref # 13)	601B6004	1
BEARING BALL #6203 (Ref # 14)	601B6203	1
BEARING BALL #6204 (Ref # 15)	601B6204	1
BEARING BALL #6205 (Ref # 15)	601B6205	1
SEAL-OIL (Ref # 16)	92049-1250	1
SEAL-OIL (Ref # 16)	92049-1240	1
OIL SEAL,28X40X8 (Ref # 17)	653B284008	1
SEAL-OIL (Ref # 17)	92049-1250	1
BOLT,HEX HEAD,6X35 (Ref # 18)	92001-164	8
BOLT,HEX HEAD,6X45 (Ref # 19)	92001-165	4
COLLAR,12.6X26X7 (Ref # 20)	92027-1147	2
CLAMP,TUBE (Ref # 21)	92037-1128	1
PIN-DOWEL (Ref # 22)	92042-007	4
BEARING,BALL,EC-6204 (Ref # 23)	92045-1026	1

1979 KX80 PARTS LIST

CRANKCASE

ITEM NAME	PART NUMBER	QUANTITY
BEARING BALL #6205 (Ref # 23)	601B6205	1
BRG,NEDL,37BTM4312 (Ref # 24)	92046-051	1
OIL SEAL SC25376 (Ref # 25)	92050-013	1
OIL SEAL,TB13225.5 (Ref # 26)	92051-005	1
GASKET CHECK VALVE (Ref # 27)	92065-058	1
PLUG (Ref # 28)	92066-1241	1
SCREW-PAN-CROS,6X45,B (Ref # 29)	220C0645	4
SCREW-PAN-CROS,6X35,B (Ref # 30)	220C0635	8