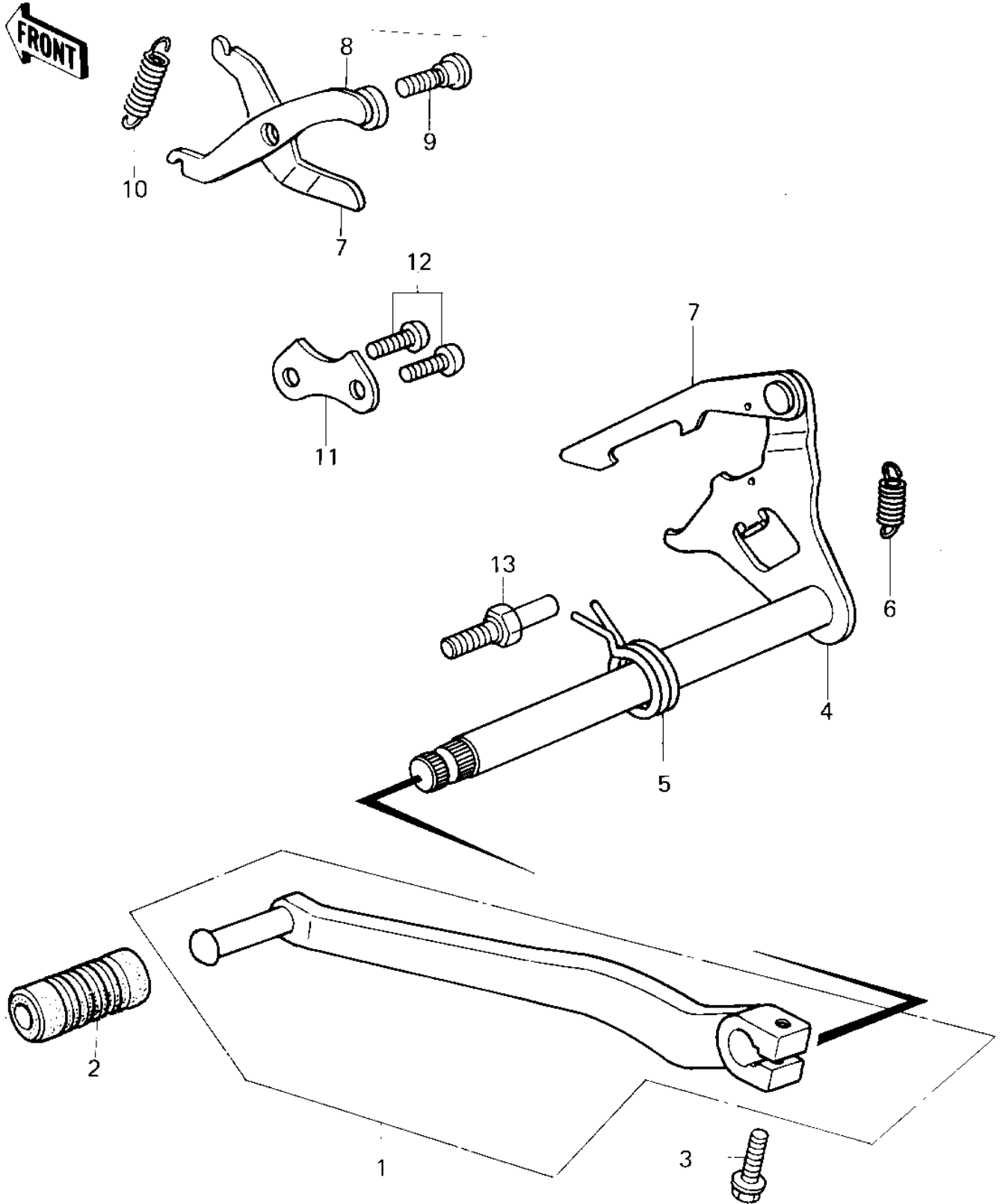


1980 KDX80 PARTS DIAGRAM

GEAR CHANGE MECHANISM



1980 KDX80 PARTS LIST

GEAR CHANGE MECHANISM

| ITEM NAME | PART NUMBER | QUANTITY |
|---------------------------------|-------------|----------|
| PEDAL ASSY,GEAR CHANG (Ref # 1) | 13156-1018 | 1 |
| DAMPER,CHANGE PEDAL (Ref # 2) | 92160-1108 | 1 |
| BOLT,FLANGED,6X22 (Ref # 3) | 92001-1352 | 1 |
| LEVER ASSY,GEAR CHANG (Ref # 4) | 13161-1010 | 1 |
| SPRING,TENTION (Ref # 5) | 92081-1129 | 1 |
| SPRING,GEAR CHANGE (Ref # 6) | 92081-156 | 1 |
| LEVER,GEAR SET (Ref # 7) | 13168-1038 | 1 |
| LEVER,NEUTRAL (Ref # 8) | 13236-1009 | 1 |
| SCREW-PAN HEAD (Ref # 9) | 92011-023 | 1 |
| SPRING,CHANGE LEVER (Ref # 10) | 92081-1109 | 1 |
| PLATE,CHANGE DRUM (Ref # 11) | 13169-1132 | 2 |
| SCREW PAN HEAD 6X14 (Ref # 12) | 220B0614 | 1 |
| BOLT,RETURN SPRING (Ref # 13) | 92001-1401 | 1 |