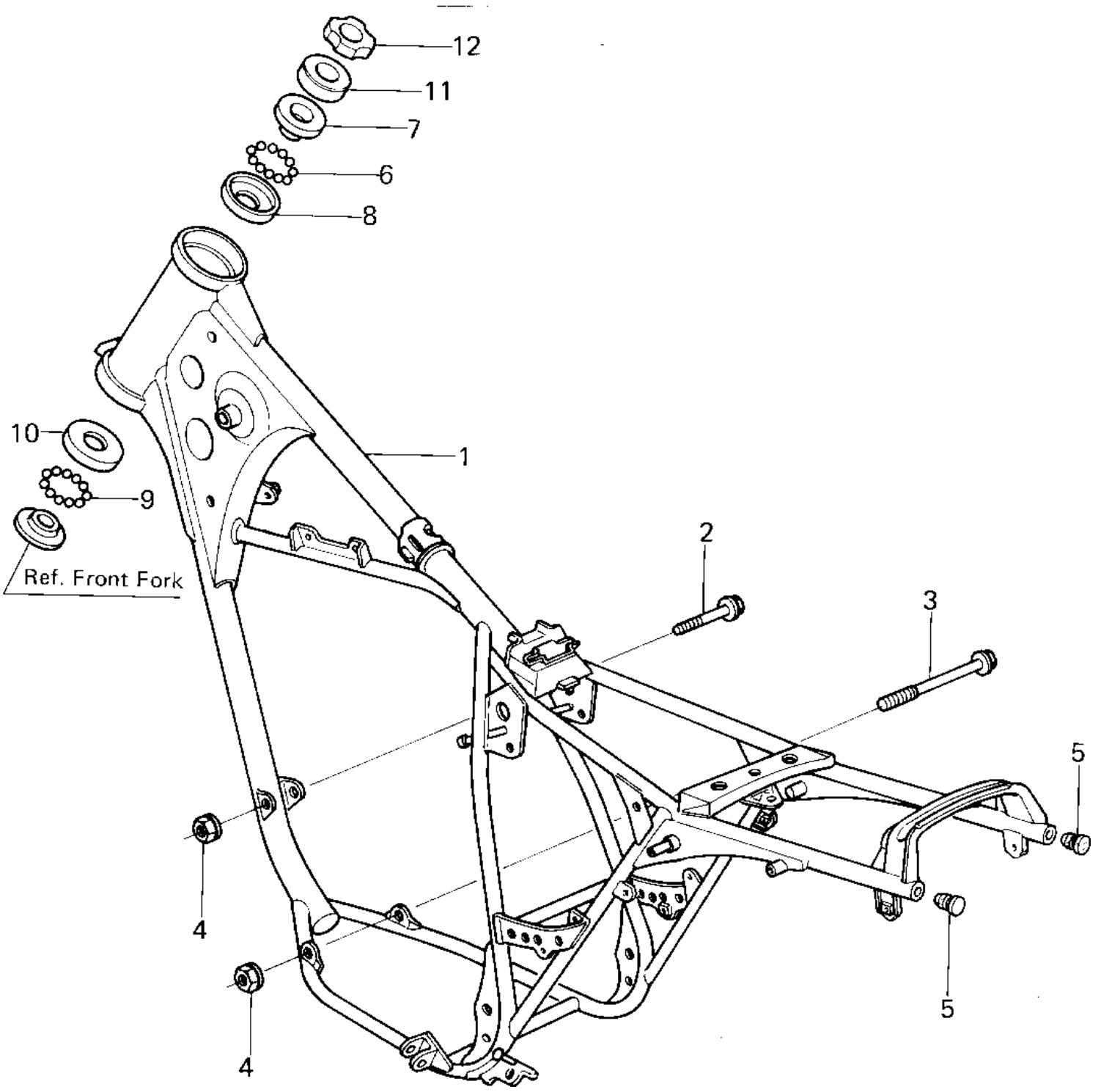


1980 KDX80 PARTS DIAGRAM

FRAME/FRAME FITTINGS



1980 KDX80 PARTS LIST

FRAME/FRAME FITTINGS

| ITEM NAME | PART NUMBER | QUANTITY |
|----------------------------------|-------------|----------|
| FRAME (Ref # 1) | 32002-1121 | 1 |
| BOLT,FLANGED,8X55 (Ref # 2) | 130G0855 | 1 |
| BOLT,FLANGED,8X115 (Ref # 3) | 92001-1113 | 1 |
| NUT,8M/M (Ref # 4) | 92015-1014 | 2 |
| PLUG,FRAME END (Ref # 5) | 92066-1034 | 2 |
| BALL STEEL 3/16' (Ref # 6) | 600A0600 | 23 |
| CONE,STRG STM BRG,UP (Ref # 7) | 92047-014 | 1 |
| RACE,STRG STM BEARING (Ref # 8) | 92048-009 | 1 |
| BALL STEEL 1/4' (Ref # 9) | 600A0800 | 19 |
| RACE STEERING BEARING (Ref # 10) | 92048-005 | 1 |
| CAP STEERING STEM (Ref # 11) | 46098-004 | 1 |
| NUT STEERING STEM LCK (Ref # 12) | 92090-006 | 1 |