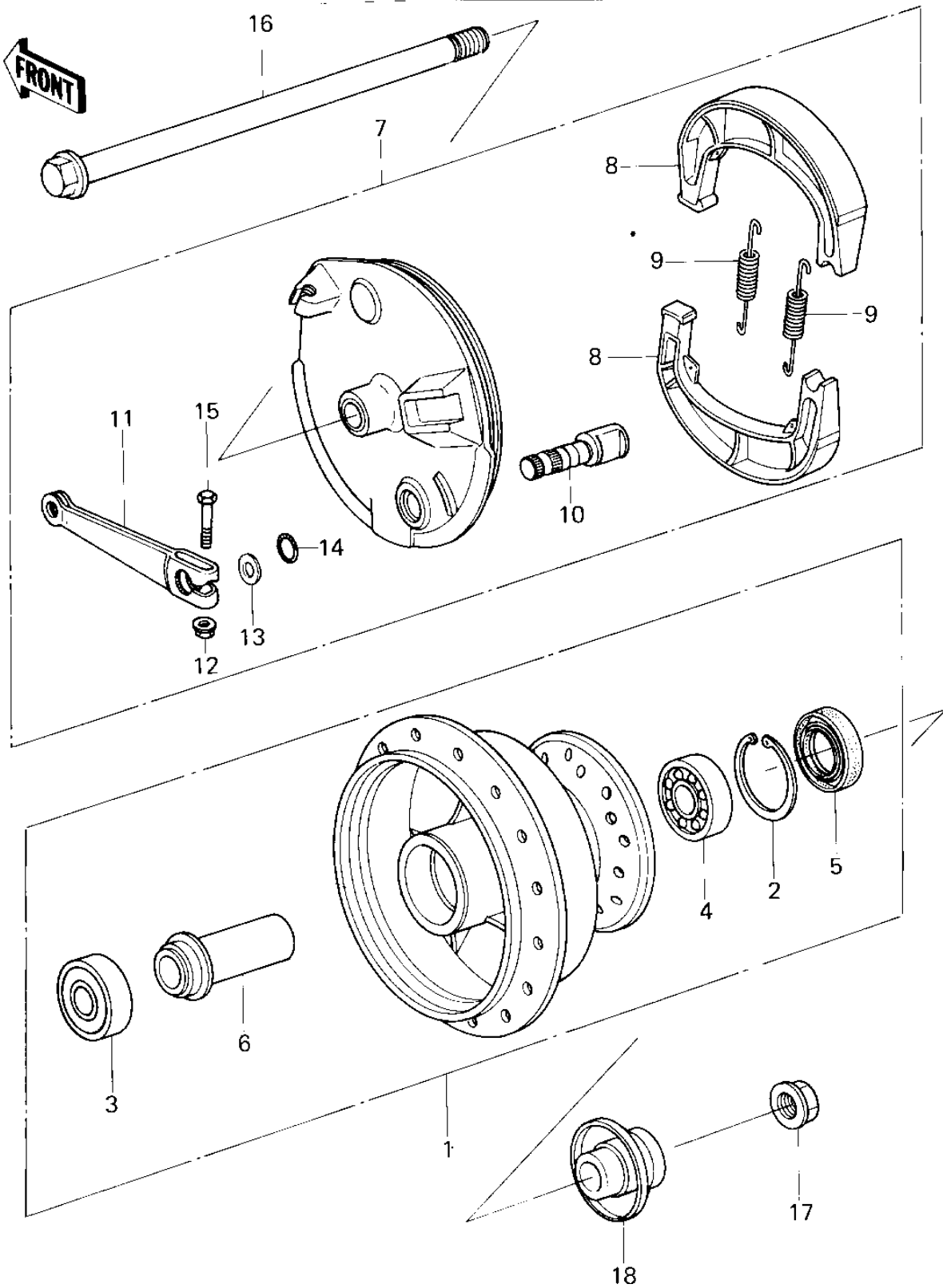


# 1981 KDX80 PARTS DIAGRAM

## FRONT HUB/BRAKE



# 1981 KDX80 PARTS LIST

## FRONT HUB/BRAKE

| ITEM NAME                        | PART NUMBER | QUANTITY |
|----------------------------------|-------------|----------|
| DRUM-ASSY,FR BRK (Ref # 1)       | 41034-1022  |          |
| CIRCLIP,35MM (Ref # 2)           | 481J3500    |          |
| BEARING,BALL,#6200U (Ref # 3)    | 601B6200U   |          |
| BEARING,BALL,#6300 (Ref # 4)     | 601B6300    |          |
| OIL SEAL,20X35X7 (Ref # 5)       | 654A203507  |          |
| COLLAR,FRONT BRAKE (Ref # 6)     | 92027-1093  |          |
| PANEL-ASY,FR BRK (Ref # 7)       | 41035-1033  |          |
| SHOE,BRAKE (Ref # 8)             | 41048-1021  |          |
| SPRING,BRAKE SHOE (Ref # 9)      | 92081-1766  |          |
| CAM,BRAKE,FRONT (Ref # 10)       | 41050-1009  |          |
| LEVER,BRAKE CAM,FRONT (Ref # 11) | 41053-1011  |          |
| NUT,6MM (Ref # 12)               | 41072-007   |          |
| WASHER (Ref # 13)                | 92022-257   |          |
| "O" RING,12MM (Ref # 14)         | 670B2012    |          |
| BOLT,HEX HEAD,6X30 (Ref # 15)    | 92001-1135  |          |
| AXLE,FRONT (Ref # 16)            | 41068-1011  |          |
| NUT,10MM (Ref # 17)              | 92015-1415  |          |
| COLLAR,FRONT AXLE (Ref # 18)     | 92027-1094  |          |