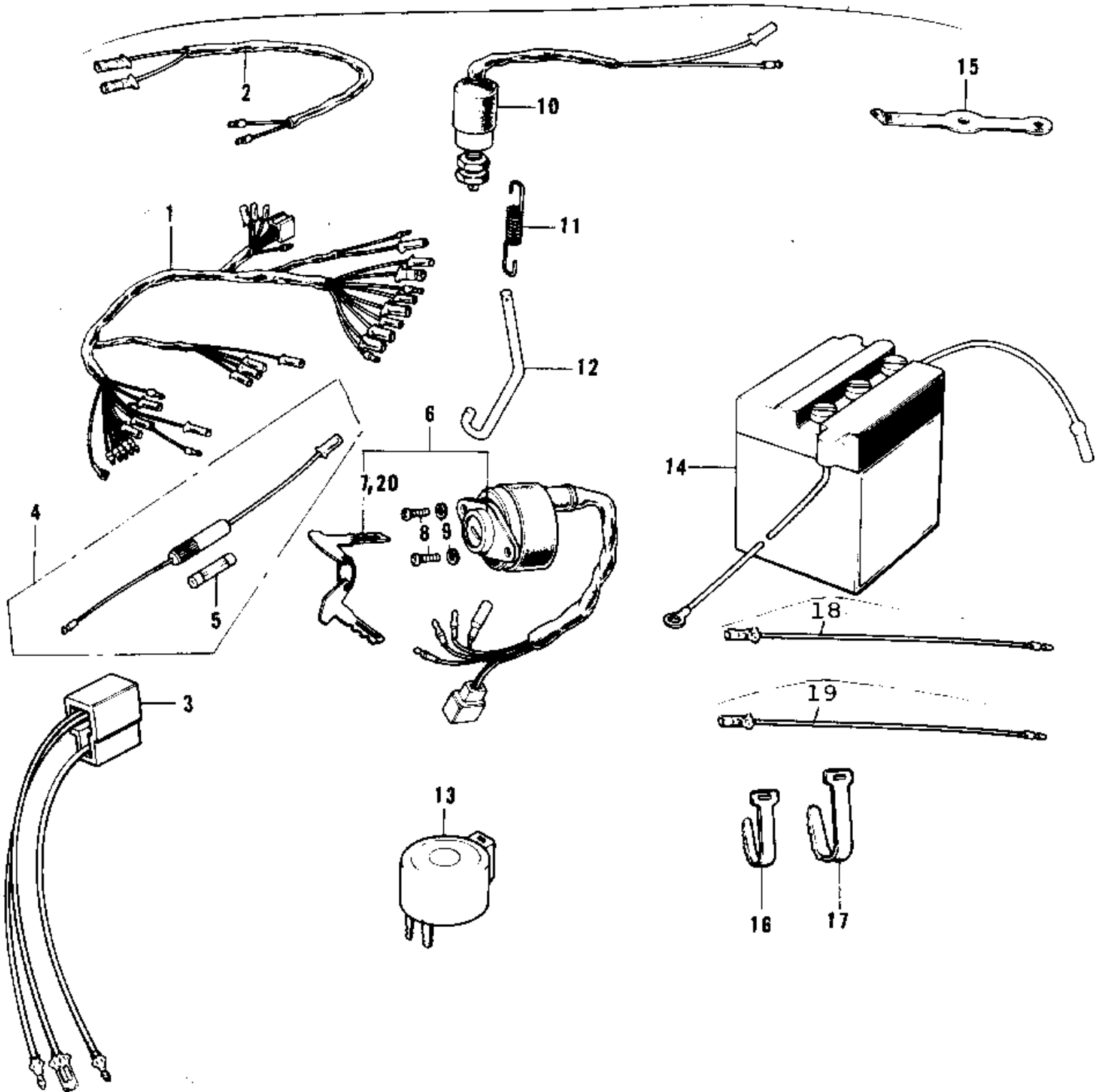


# 1969 Bushmaster PARTS DIAGRAM

CHASSIS ELECTRICAL EQUIPMENT (74-75)



# 1969 Bushmaster PARTS LIST

## CHASSIS ELECTRICAL EQUIPMENT ('74-'75)

ITEM NAME	PART NUMBER	QUANTITY
WIRING HARNESS,MAIN (Ref # 1)	26001-114	1
WIRING HARNESS,MAIN (Ref # 1)	26001-126	1
WIRING HARNESS-REAR (Ref # 2)	26002-030	1
WIRE,RECTIFIER LEAD (Ref # 3)	26011-072	1
FUES ASSY (Ref # 4)	26004-008	1
FUSE 10A (Ref # 5)	26006-003	1
SWITCH ASSY,IGNITION (Ref # 6)	27005-1016	1
KEY SET NO.321 (Ref # 7)	27008-034-21	1
KEY SET NO.322 (Ref # 7)	27008-034-22	1
KEY SET NO.323 (Ref # 7)	27008-034-23	1
KEY SET NO.324 (Ref # 7)	27008-034-24	1
KEY SET NO.235 (Ref # 7)	27008-034-35	1
KEY SET NO.236 (Ref # 7)	27008-034-36	1
KEY SET NO.237 (Ref # 7)	27008-034-37	1
KEY SET NO.238 (Ref # 7)	27008-034-38	1
KEY SET NO.239 (Ref # 7)	27008-034-39	1
KEY SET NO.140 (Ref # 7)	27008-034-40	1
KEY SET NO.141 (Ref # 7)	27008-034-41	1
KEY SET NO.142 (Ref # 7)	27008-034-42	1
KEY SET NO.143 (Ref # 7)	27008-034-43	1
SCREW PAN HEAD 5X12 (Ref # 8)	220B0512	2
WASHER SPRING 5MM (Ref # 9)	461F0500	2
SWITCH-BRAKE LAMP (Ref # 10)	27010-018	1
SWITCH-BRAKE LAMP (Ref # 10)	27010-018	1
SPRING BRAKE LAMP SW (Ref # 11)	27011-006	1
HOOK, BRAKE L;AMP SWITCH SPRING (Ref # 12)	27012-005	1
RELAY-TURN SIGNAL (Ref # 13)	27002-013	1
YUA BAT 6N4-2A-5 (Ref # 14)	K26012-020	1
BAND RUBBER (Ref # 15)	92072-018	1

# 1969 Bushmaster PARTS LIST

## CHASSIS ELECTRICAL EQUIPMENT ('74-'75)

ITEM NAME	PART NUMBER	QUANTITY
BAND,MIDDLE (Ref # 16)	92072-031	3
BAND,LONG (Ref # 17)	92072-032	2
WIRE-LEAD (Ref # 18)	26011-032	2
WIRE-LEAD (Ref # 19)	26011-032	1
KEY,BLANK (Ref # 20)	27008-1016	1
KEY,BLANK (Ref # 20)	27008-1017	1
KEY,BLANK (Ref # 20)	27008-1018	1
KEY,BLANK (Ref # 20)	27008-1019	1