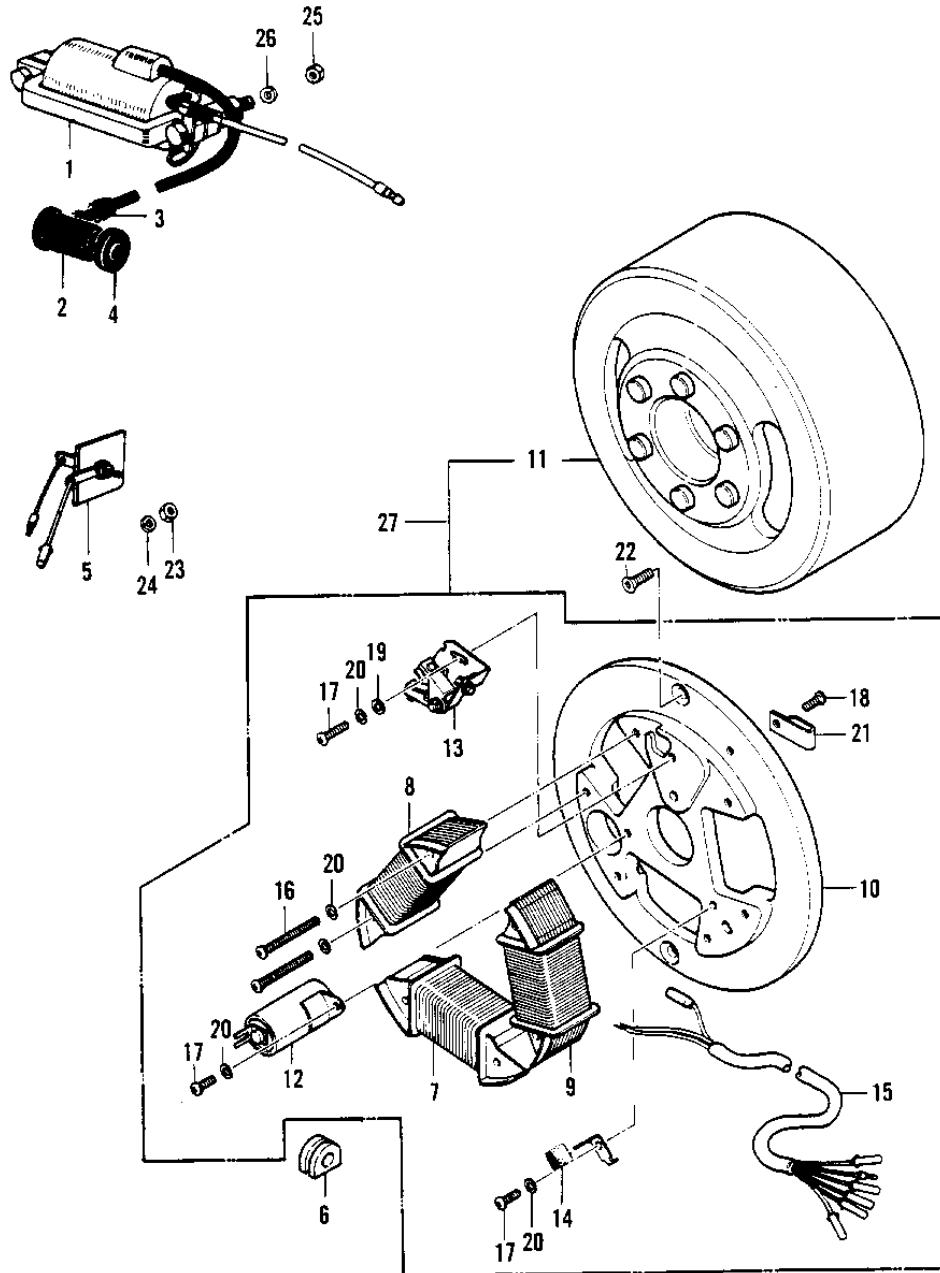


1976 KV100-A7 PARTS DIAGRAM

IGNITION/GENERATOR ('70-73)



1976 KV100-A7 PARTS LIST

IGNITION/GENERATOR ('70-'73)

ITEM NAME	PART NUMBER	QUANTITY
COIL,IGNITION (Ref # 1)	21121-1047	1
COIL,IGNITION (Ref # 1)	21121-1047	1
CAP-SPARK PLUG (Ref # 2)	21130-016	1
CAP-SPARK PLUG (Ref # 2)	21130-016	X
GROMMET-PLUG CAP,A (Ref # 3)	21131-004	1
GROMMET,SPARK PLG CAP (Ref # 4)	21132-005	1
RECTIFIER (Ref # 5)	21061-5001	1
GROMMET WIRING HARN (Ref # 6)	21017-002	1
COIL LIGHTING A (Ref # 7)	21047-010	1
COIL LIGHTING B (Ref # 8)	21047-011	1
COIL PRIMARY (Ref # 9)	21049-006	1
PLATE-COIL,MAGNETO (Ref # 10)	21048-1002	1
PLATE-COIL,MAGNETO (Ref # 10)	21048-1002	1
MAGNETO ASSY (Ref # 11)	21002-1055	1
CONDENSER (Ref # 12)	21013-006	1
BREAKER ASSY CONTACT (Ref # 13)	21008-006	1
FELT OIL (Ref # 14)	21019-005	1
WIRING HARNESS MAG (Ref # 15)	21029-014	1
SCREW PAN HEAD 4X30 (Ref # 16)	220E0430	6
SCREW PAN HEAD 4X6 (Ref # 17)	220B0406	3
SCREW-PAN-CRSOSS,4X12 (Ref # 18)	220B0412	1
WASHER PLAIN 4MM (Ref # 19)	410B0400	8
WASHER SPRING 4MM (Ref # 20)	461F0400	10
CLAMP WIRING HARNESS (Ref # 21)	21037-002	1
SCREW CNTSNK HD 6X14 (Ref # 22)	221B0614	2
NUT,5MM (Ref # 23)	311B0500	1
WASHER SPRING 5MM (Ref # 24)	461F0500	1
NUT 6MM (Ref # 25)	311B0600	2
WASHER SPRING 6MM (Ref # 26)	461F0600	2