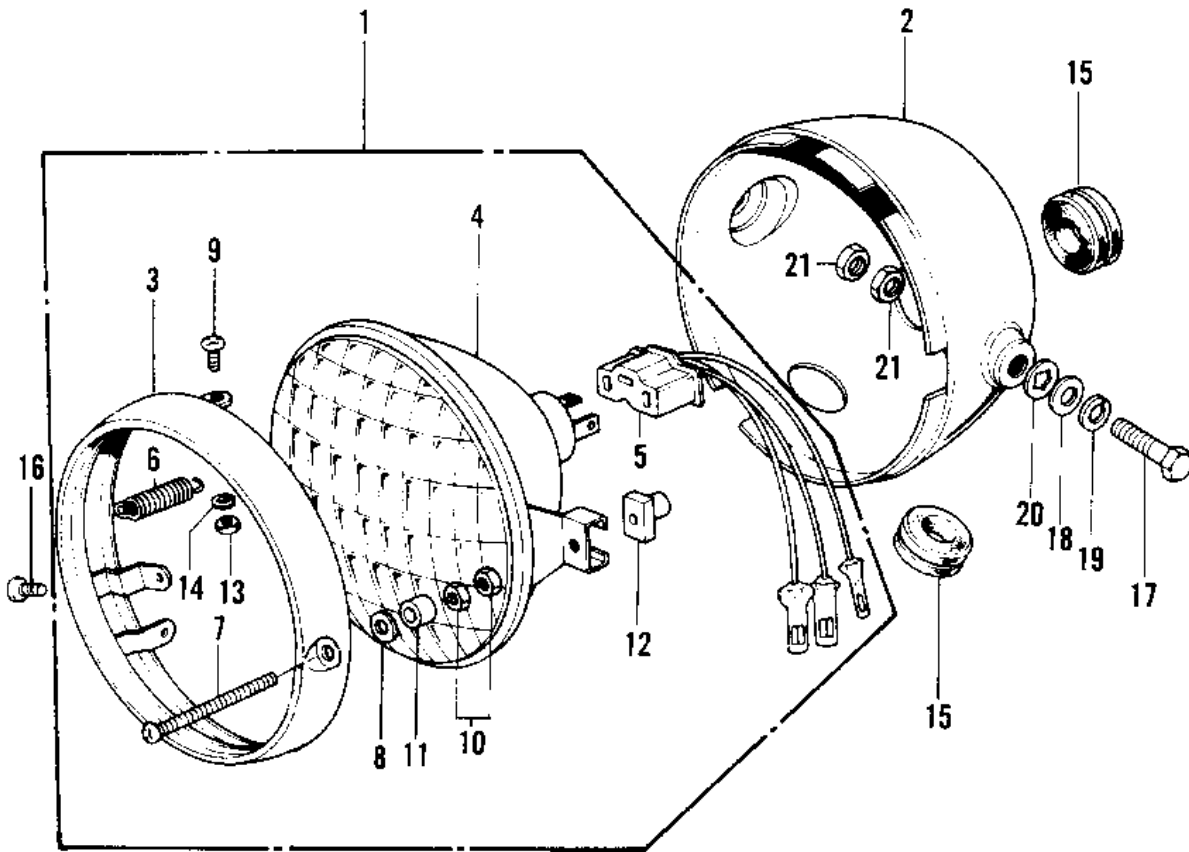


1974 G4TR-D PARTS DIAGRAM

HEADLIGHT ('70-'73)



1974 G4TR-D PARTS LIST

HEADLIGHT ('70-'73)

ITEM NAME	PART NUMBER	QUANTITY
LAMP UNIT HEAD (Ref # 1)	23003-009	
CASE-HEAD LAMP,BLACK (Ref # 2)	23005-021-21	
RIM HEAD LAMP (Ref # 3)	23006-020	
SEALED BEAM UNIT (Ref # 4)	23007-023	
SOCKET ASSY,HD LIGHT (Ref # 5)	23008-044	
SOCKET ASSY,HD LIGHT (Ref # 5)	23008-044	
SPRING LENS FITTING (Ref # 6)	23014-008	
SCREW ADJUST (Ref # 7)	23019-013	
WASHER ADJUST (Ref # 8)	23021-007	
SCREW FITTING (Ref # 9)	23019-014	
NUT ADJUST (Ref # 10)	23020-013	
WASHER FITTING (Ref # 11)	23058-001	
NUT ADJUST (Ref # 12)	23020-012	
NUT,4MM (Ref # 13)	311B0400	
WASHER SPRING 4MM (Ref # 14)	461F0400	
GROMMET WIRING HARNES (Ref # 15)	23023-007	
SCREW OVL CNTSNK 5X8 (Ref # 16)	222E0508A	
BOLT HEX HEAD 10X20 (Ref # 17)	113N1020	
WASHER PLAIN 10MM (Ref # 18)	411B1000	
WASHER SPRING 10MM (Ref # 19)	461F1000	
WASHER LOCK 10MM (Ref # 20)	463H1000	
NUT 10MM (Ref # 21)	92016-027	