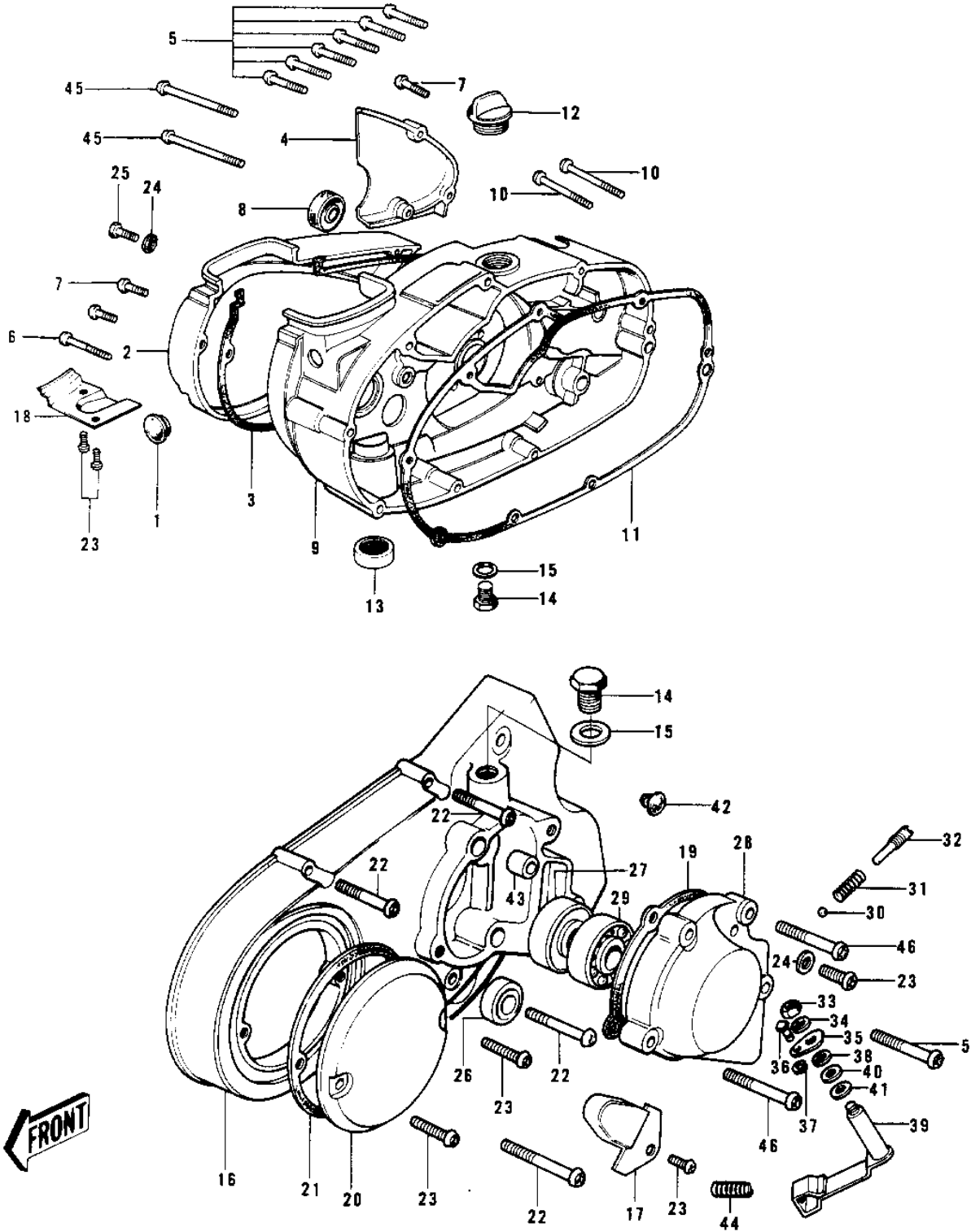


1975 G4TR-E PARTS DIAGRAM

ENGINE COVERS 1/2 ('74-'75)



1975 G4TR-E PARTS LIST

ENGINE COVERS 1/2 ('74-'75)

| ITEM NAME | PART NUMBER | QUANTITY |
|----------------------------------|--------------|----------|
| CAP CARB MOUNT HOLE (Ref # 1) | 14039-001 | 1 |
| COVER,CARB BARREL (Ref # 2) | 14030-1005 | 1 |
| COVER,CARB BARREL (Ref # 2) | 14030-1005 | 1 |
| GASKET,CARBURETOR COV (Ref # 3) | 11060-1201 | 1 |
| COVER,OIL PUMP,BUFF (Ref # 4) | 14030-050-80 | 1 |
| SCREW PAN HEAD 6X30 (Ref # 5) | 220B0630 | 8 |
| SCREW PAN HEAD 6X35 (Ref # 6) | 220B0635 | 1 |
| SCREW PAN HEAD 6X20 (Ref # 7) | 220B0620 | 3 |
| OIL SEAL TB14257 (Ref # 8) | 653B142507 | 1 |
| COVER,R.H,ENG,BARREL (Ref # 9) | 14032-1017 | 1 |
| COVER,R.H,ENG,BARREL (Ref # 9) | 14032-1017 | 1 |
| SCREW PAN HEAD 6X45 (Ref # 10) | 220B0645 | 2 |
| GASKET,CLUTCH COVER (Ref # 11) | 11060-1198 | 1 |
| FILLER,OIL (Ref # 12) | 16115-018 | 1 |
| DRAIN,FUEL (Ref # 13) | 16116-006 | 1 |
| PLUG OIL DRAIN (Ref # 14) | 92067-001 | 2 |
| GASKET CHECK VALVE (Ref # 15) | 92065-058 | 2 |
| COVER,L.H ENGINE,BUFF (Ref # 16) | 14031-063-80 | 1 |
| CAP-L.H.ENGINE COVER (Ref # 17) | 14036-004 | 1 |
| COVER,CLUTCH CABLE (Ref # 18) | 14025-1137 | 1 |
| COVER,CLUTCH CABLE (Ref # 18) | 14025-1137 | 1 |
| GASKET-LH ENG COV CAP (Ref # 19) | 14051-002 | 1 |
| COVER-BRK POINT,CR (Ref # 20) | 14027-007-79 | 1 |
| GASKET BREAKER COVER (Ref # 21) | 14050-002 | 1 |
| SCREW PAN HEAD 6X65 (Ref # 22) | 220B0665 | 6 |
| SCREW PAN HEAD 6X12 (Ref # 23) | 220B0612 | 6 |
| WASHER OIL PUMP BANJO (Ref # 24) | 92022-077 | 2 |
| BOLT,HEX HEAD,6X14 (Ref # 25) | 92001-121 | 1 |
| SEAL-OIL (Ref # 26) | 92049-1249 | 1 |

1975 G4TR-E PARTS LIST

ENGINE COVERS 1/2 ('74-'75)

| ITEM NAME | PART NUMBER | QUANTITY |
|----------------------------------|-------------|----------|
| OIL SEAL SC38556 (Ref # 27) | 92050-012 | 1 |
| CAP ASSY,ENG COV,BUFF (Ref # 28) | 14075-1001 | 1 |
| CAP ASSY,ENG COV,BUFF (Ref # 28) | 14075-1001 | 1 |
| BEARING BALL #6005 (Ref # 29) | 601B6005 | 1 |
| BALL STEEL 1/4' (Ref # 30) | 600A0800 | 1 |
| SPRING (Ref # 31) | 92081-075 | 1 |
| PLUG L.H ENG COV CAP (Ref # 32) | 92066-015 | 1 |
| NUT 6MM (Ref # 33) | 312B0600 | 1 |
| WASHER SPRING 6MM (Ref # 34) | 461F0600 | 1 |
| LEVER A (Ref # 35) | 13204-002 | 1 |
| RETAINER SHIFT ROD (Ref # 36) | 13197-001 | 1 |
| CIRCLIP SELD BEM FIT (Ref # 37) | 482K4000 | 1 |
| WASHER WAVE (Ref # 38) | 13211-001 | 1 |
| SHAFT ASY-SHIFT LEVER (Ref # 39) | 13234-002 | 1 |
| OIL SEAL,VC8144 (Ref # 40) | 92054-015 | 1 |
| WASHER PLAIN 8MM (Ref # 41) | 410B0800 | 1 |
| PLUG,RUBBER (Ref # 42) | 92074-019 | 1 |
| PIN,DOWEL,10X8.2X14 (Ref # 43) | 92043-1037 | 2 |
| SPRING-CHANGE CABLE (Ref # 44) | 92081-099 | 1 |
| SCREW PAN HEAD 6X75 (Ref # 45) | 220B0675 | 2 |
| SCREW PAN HEAD 6X40 (Ref # 46) | 220B0640 | 2 |