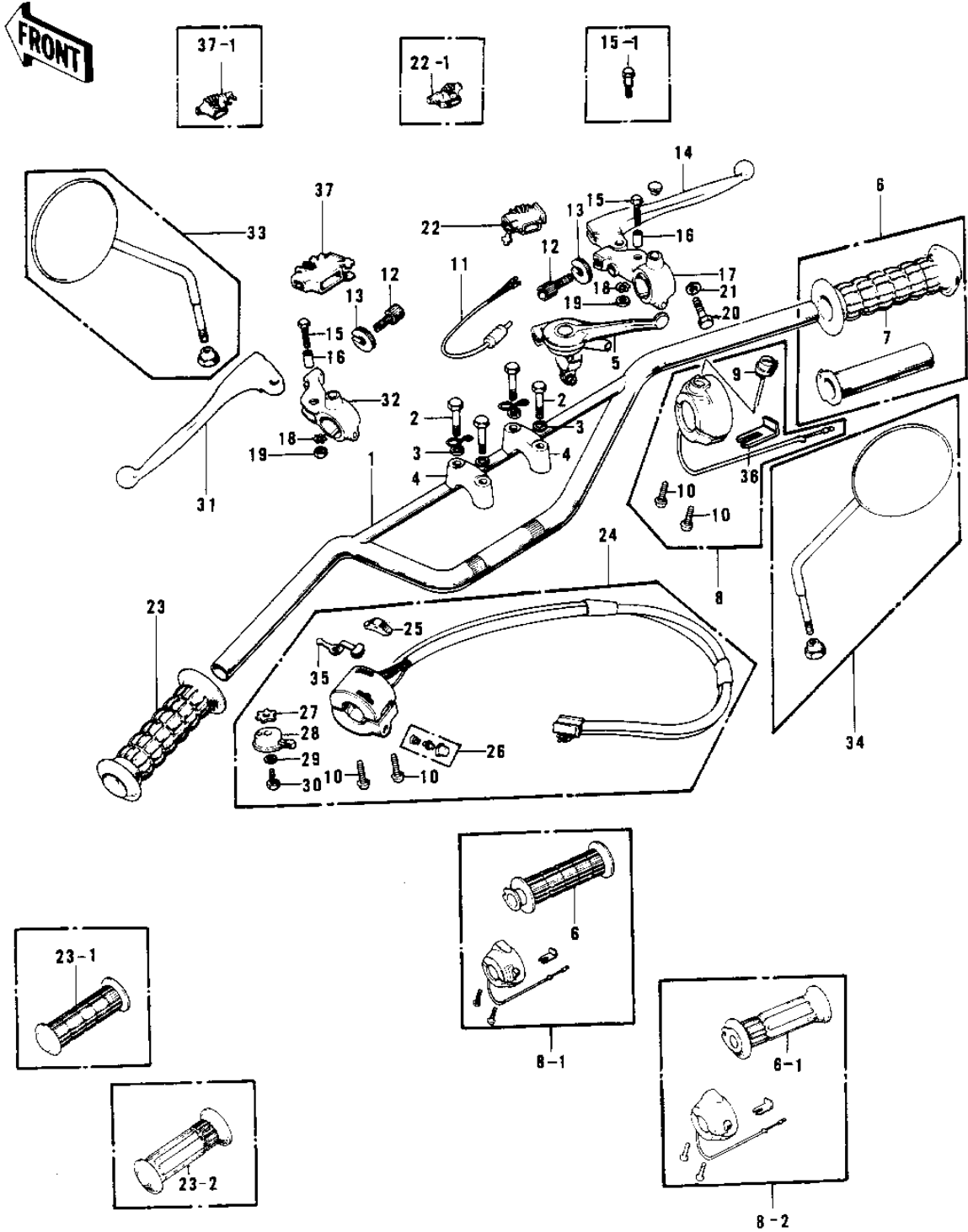


# 1975 G4TR-E PARTS DIAGRAM

HANDLEBAR 1/2 (74-'75)



# 1975 G4TR-E PARTS LIST

## HANDLEBAR 1/2 ('74-'75)

ITEM NAME	PART NUMBER	QUANTITY
HANDLEBAR (Ref # 1)	46004-004	1
BOLT 8X38 (Ref # 2)	92001-1405	4
BOLT 8X38 (Ref # 2)	92001-1405	4
WASHER SPRING 8MM (Ref # 3)	461F0800	4
HOLDER-HANDLEBAR (Ref # 4)	46012-008	2
LEVER-CHANGE (Ref # 5)	46131-002	1
GRIP ASSY-THROTTLE (Ref # 6)	46019-020	1
GRIP ASSY,THROTTLE (Ref # 6)	46019-034	1
GRIP ASSY,THROTTLE (Ref # 6-1)	46019-039	1
RUBBER-R.H. GRIP (Ref # 7)	46061-013	1
CASE ASSY,R.H,BLACK (Ref # 8)	46018-020-10	1
CASE ASSY,R.H (Ref # 8-1)	46018-036	1
CASE ASSY,R.H (Ref # 8-2)	46018-047	1
SWITCH-ENGINE STOP (Ref # 9)	46027-008	1
SCREW-PAN-CROS,5X25 (Ref # 10)	220B0525	4
SWITCH-FR. BRAKE LAMP (Ref # 11)	27021-004	1
SCREW,CABLE ADJUST (Ref # 12)	46055-009	2
NUT-LOCK (Ref # 13)	46056-005	2
LEVER FRONT BRAKE (Ref # 14)	46058-004	1
BOLT HEX HEAD 5X20 (Ref # 15)	92007-020	2
BOLT,HEX HEAD,5X22 (Ref # 15-1)	92007-046	2
COLLAR LEVER (Ref # 16)	46059-011	2
HOLDER-FR BRK LEV,BLK (Ref # 17)	46060-009-21	1
WASHER LOCK 5MM (Ref # 18)	464H0500	2
NUT 5MM (Ref # 19)	312B0500	2
NUT-LOCK,5MM (Ref # 19)	92019-014	2
BOLT HEX HEAD 6X25 (Ref # 20)	110N0625	2
WASHER PLAIN 6MM (Ref # 21)	411B0600	2
DUST COVER (Ref # 22)	46071-002	1

# 1975 G4TR-E PARTS LIST

HANDLEBAR 1/2 ('74-'75)

ITEM NAME	PART NUMBER	QUANTITY
BOOTS,LEVER HOLDER (Ref # 22-1)	49006-1017	1
RUBBER-L.H.GRIP (Ref # 23)	46075-018	1
RUBBER-L.H GRIP (Ref # 23-1)	46075-019	1
RUBBER,L.H GRIP (Ref # 23-2)	46075-029	1
CASE ASSY,L.H,BLACK (Ref # 24)	46091-019-10	1
CASE ASSY,L.H (Ref # 24)	46091-040	1
KNOB-L.H SWITCH (Ref # 25)	46044-011	1
SWITCH ASSY LH BUTTON (Ref # 26)	46078-003	1
WASHER LOCK (Ref # 27)	92095-012	1
LEVER,STARTER,BLACK (Ref # 28)	46096-008-10	1
WASHER PLAIN 6MM (Ref # 29)	411B0600	1
BOLT HEX HEAD 6X8 (Ref # 30)	110B0608	1
LEVER-CLUTCH (Ref # 31)	46092-015	1
HOLDER-CLUTCH LEV,BLK (Ref # 32)	46094-011-21	1
REAR VIEW MIRROR,L.H (Ref # 33)	56003-009	1
REAR VIEW MIRROR,R.H (Ref # 34)	56002-020	1
KNOB-SWITCH (Ref # 35)	46044-010	1
HOLDER,CONTROL CABLE (Ref # 36)	46037-023	1
DUST COVER (Ref # 37)	46071-002	1
BOOTS,LEVER HOLDER (Ref # 37-1)	49006-1017	1