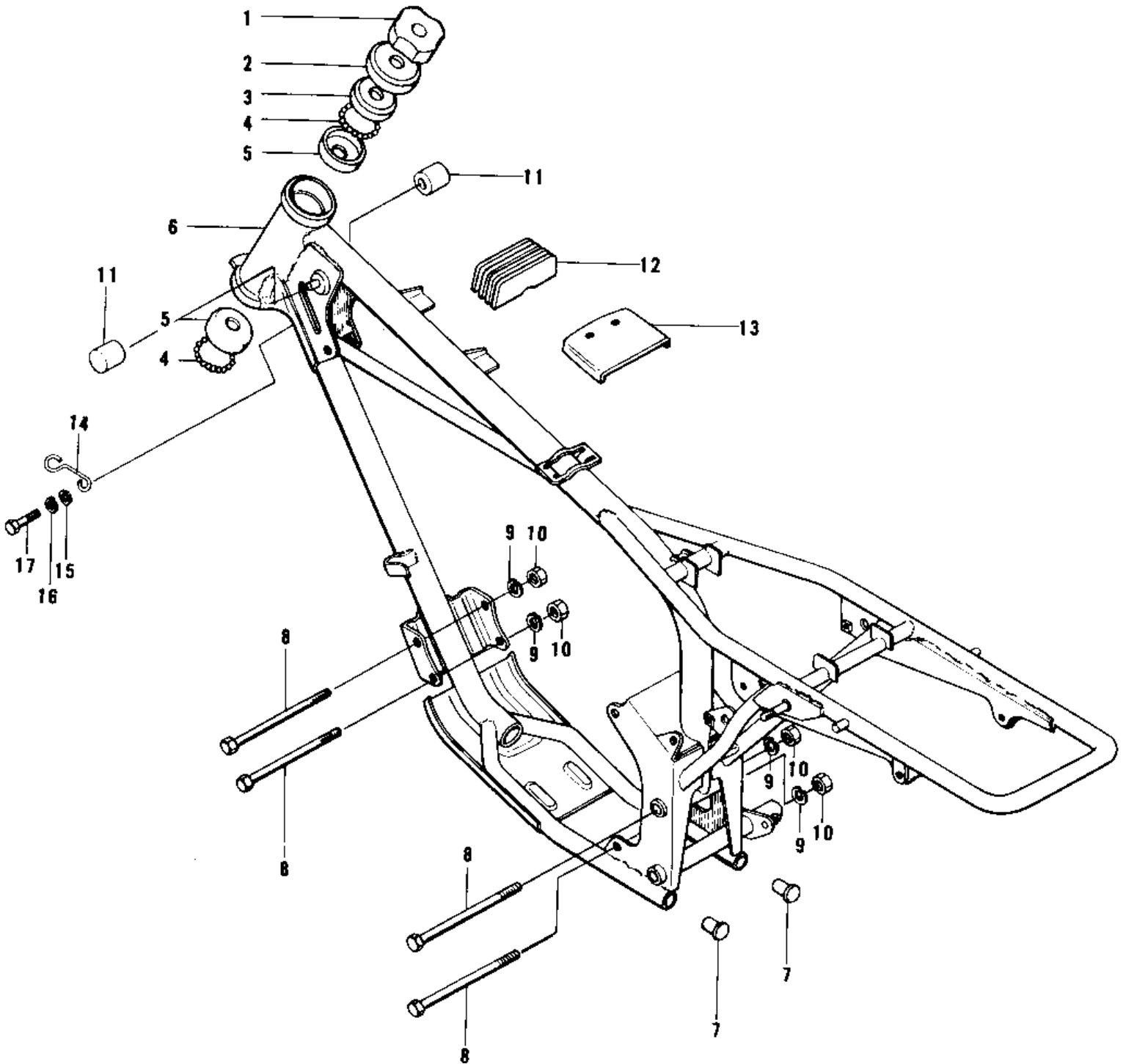


# 1976 KD100-M1 PARTS DIAGRAM

## FRAME/FRAME FITTINGS



## 1976 KD100-M1 PARTS LIST

### FRAME/FRAME FITTINGS

| ITEM NAME                        | PART NUMBER | QUANTITY |
|----------------------------------|-------------|----------|
| NUT STEERING STEM LCK (Ref # 1)  | 92090-006   | 1        |
| LEVER STARTER (Ref # 2)          | 46096-004   | 1        |
| CONE UPPER BEARING (Ref # 3)     | 92047-005   | 1        |
| BALL STEEL 3/16' (Ref # 4)       | 600A0600    | 46       |
| RACE BEARING (Ref # 5)           | 92048-004   | 2        |
| FRAME (Ref # 6)                  | 32002-110   | 1        |
| CAP PIPE END (Ref # 7)           | 32112-001   | 2        |
| BOLT,FLANGED,10X115 (Ref # 8)    | 92001-1603  | 4        |
| WASHER SPRING 10MM (Ref # 9)     | 461F1000    | 4        |
| NUT,10MM (Ref # 10)              | 314B1000    | 4        |
| DAMPER RUBBER (Ref # 11)         | 92075-044   | 2        |
| DAMPER RUBBER,FL TANK (Ref # 12) | 92075-195   | 1        |
| DAMPER RUBBER,FL TANK (Ref # 13) | 92075-230   | 1        |
| CLAMP,CABLE (Ref # 14)           | 92037-117   | 1        |
| WASHER PLAIN 6MM (Ref # 15)      | 411B0600    | 1        |
| WASHER SPRING 6MM (Ref # 16)     | 461F0600    | 1        |
| BOLT-UPSET,6X12 (Ref # 17)       | 112G0612    | 1        |