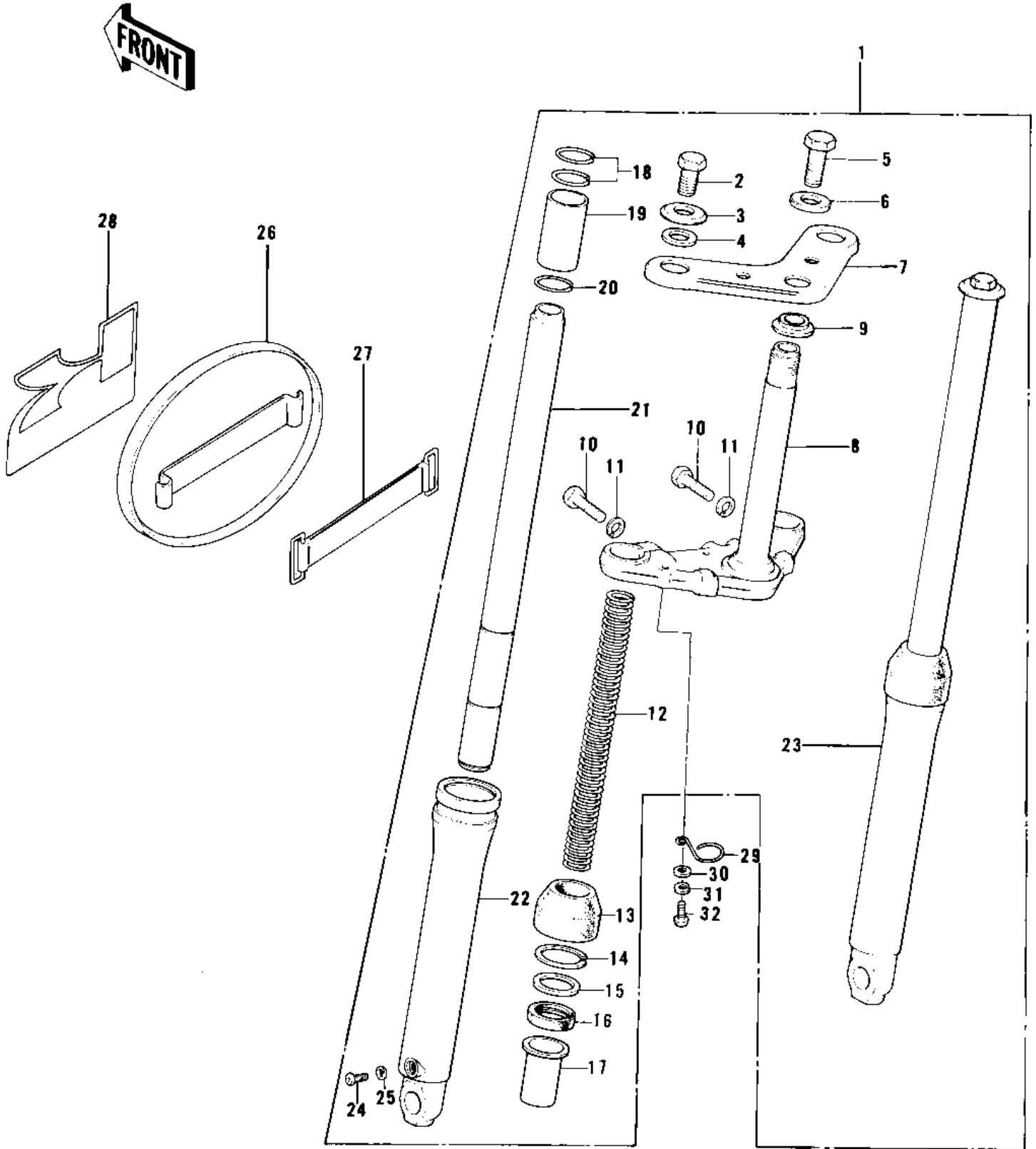


1979 KD100-M4 PARTS DIAGRAM

FRONT FORK



1979 KD100-M4 PARTS LIST

FRONT FORK

| ITEM NAME | PART NUMBER | QUANTITY |
|----------------------------------|-------------|----------|
| FORK-FRONT (Ref # 1) | 44001-161 | |
| BOLT (Ref # 2) | 92001-1742 | |
| WASHER (Ref # 3) | 92022-1381 | |
| GASKET,FORK TOP BOLT (Ref # 4) | 44045-053 | |
| BOLT,HEX HEAD 10X35 (Ref # 5) | 92001-1252 | |
| WASHER (Ref # 6) | 92022-1381 | |
| HEAD,STEERING (Ref # 7) | 44039-056 | |
| STEM,STEERING (Ref # 8) | 44037-069 | |
| CONE LOWER BEARING (Ref # 9) | 92047-004 | |
| BOLT,HEX HEAD 10X35 (Ref # 10) | 92001-1252 | |
| WASHER SPRING 10MM (Ref # 11) | 461F1000 | |
| SPRING,FORK INNER (Ref # 12) | 44026-051 | |
| DUST SHIELD,FORK (Ref # 13) | 44010-024 | |
| CIRCLIP,40MM (Ref # 14) | 44044-016 | |
| WASHER,FORK OUTER TUB (Ref # 15) | 44043-054 | |
| SEAL-OIL,OUTER TUBE (Ref # 16) | 92049-1075 | |
| GUIDE,FORK INNER TUBE (Ref # 17) | 44015-016 | |
| RING,INNER TUBE GUIDE (Ref # 18) | 44020-003 | |
| PISTON,FORK (Ref # 19) | 44018-007 | |
| CIRCLIP,FORK PISTON (Ref # 20) | 44044-017 | |
| TUBE,FORK INNER (Ref # 21) | 44013-051 | |
| TUBE,LH,FORK OUTER (Ref # 22) | 44005-052 | |
| TUBE,RH,FORK OUTER (Ref # 23) | 44006-050 | |
| SCREW PAN HEAD 4X6 (Ref # 24) | 220B0406 | |
| GASKET,FORK DRAIN PLG (Ref # 25) | 44045-046 | |
| PLATE,FRONT NUMBER (Ref # 26) | 58029-025 | |
| BAND BATTERY (Ref # 27) | 92072-006 | |
| EMBLEM,NUMBER PLATE (Ref # 28) | 56018-243 | |
| CLAMP-CABLE (Ref # 29) | 92037-046 | |

1979 KD100-M4 PARTS LIST

FRONT FORK

| ITEM NAME | PART NUMBER | QUANTITY |
|------------------------------|-------------|----------|
| WASHER PLAIN 6MM (Ref # 30) | 411B0600 | |
| WASHER SPRING 6MM (Ref # 31) | 461F0600 | |
| BOLT-UPSET,6X12 (Ref # 32) | 112G0612 | |