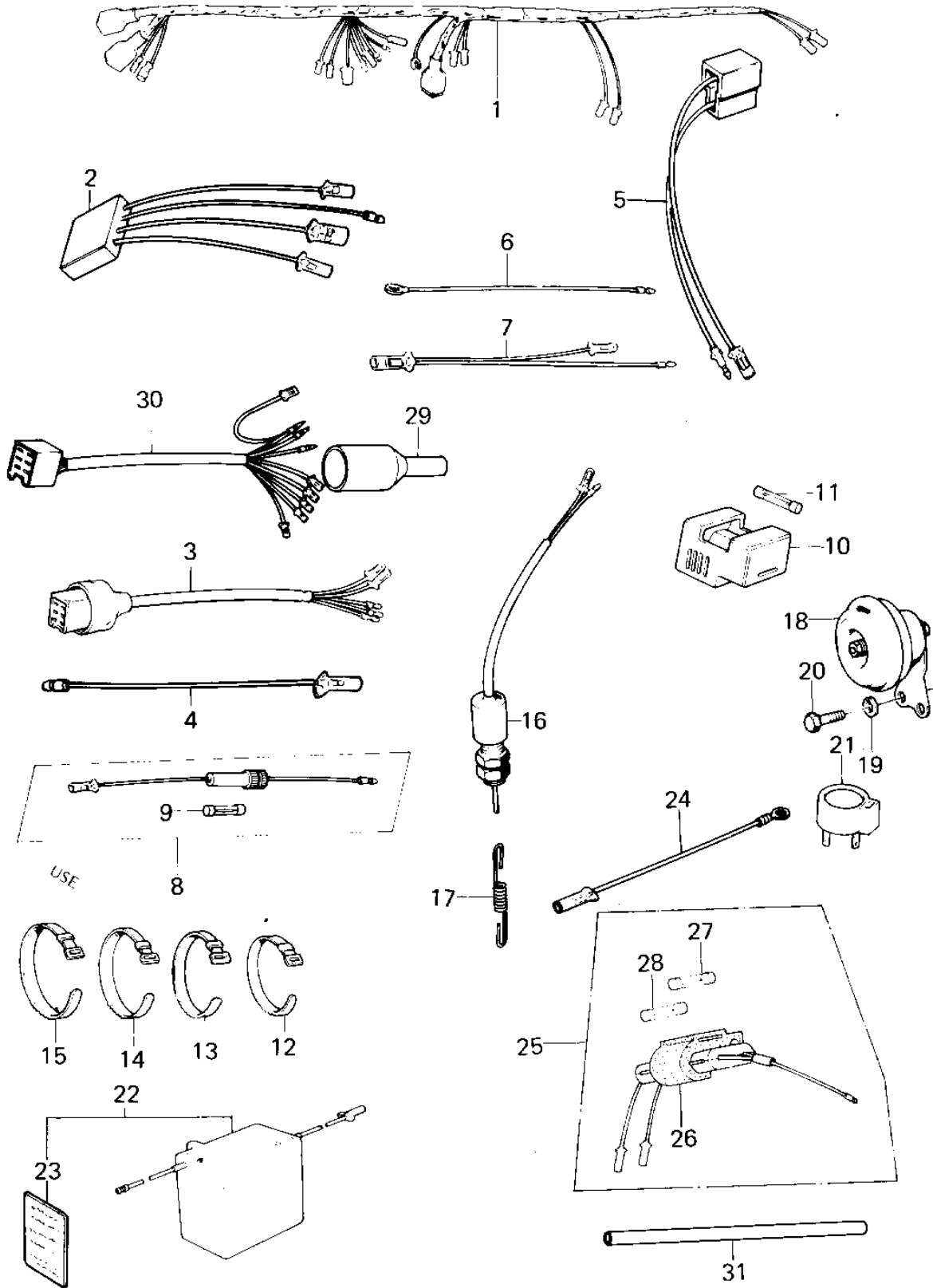


# 1979 KM100-A4 PARTS DIAGRAM

## CHASSIS ELECTRICAL EQUIPMENT



# 1979 KM100-A4 PARTS LIST

## CHASSIS ELECTRICAL EQUIPMENT

ITEM NAME	PART NUMBER	QUANTITY
WIRING HARNESS,MAIN (Ref # 1)	26001-118	
WIRING HARNESS MAIN (Ref # 1)	26001-1067	
WIRING HARNESS,MAIN (Ref # 1)	26001-1108	
WIRING HARNESS,REAR (Ref # 2)	26002-056	
WIRE,LEAD (Ref # 3)	26011-1042	
WIRE,LEAD (Ref # 3)	26011-1042	
WIRE,LEAD (Ref # 4)	26011-094	
WIRE,RECTIFIER LEAD (Ref # 5)	26011-074	
LEAD WIRE,SIGNAL LAMP (Ref # 6)	26011-063	
LEAD WIRE (Ref # 7)	26011-042	
FUSE ASSY (Ref # 8)	26004-017	
FUSE 10A (Ref # 9)	26006-003	
HOLDER,SPARE FUSE (Ref # 10)	26016-003	
FUSE 10A (Ref # 11)	26006-003	
BAND,SHORT (Ref # 12)	92072-030	
BAND,MIDDLE (Ref # 13)	92072-031	
BAND,WIRING HARNESS (Ref # 14)	92072-056	
BAND,LONG (Ref # 15)	92072-032	
SWITCH-BRAKE LAMP (Ref # 16)	27010-015	
SWITCH,BRAKE LIGHT (Ref # 16)	27010-025	
SPRING-BRAKE LAMP SW (Ref # 17)	27011-011	
HORN (Ref # 18)	27003-073	
HORN (Ref # 18)	27003-060	
WASHER SPRING 6MM (Ref # 19)	461F0600	
BOLT,6X10 (Ref # 20)	112G0610	
RELAY-TURN SIGNAL (Ref # 21)	27002-013	
YUA BAT 6N4-2A-5 (Ref # 22)	K26012-020	
YUA BAT 6N6-1D-2 (Ref # 22)	K26012-034	
YUA BAT 6N6-1D-2 (Ref # 22)	K26012-034	

# 1979 KM100-A4 PARTS LIST

## CHASSIS ELECTRICAL EQUIPMENT

ITEM NAME	PART NUMBER	QUANTITY
LABEL-WARNING,BATTERY (Ref # 23)	56040-1036	
WIRE,LEAD (Ref # 24)	26011-093	
FUSE ASSY (Ref # 25)	26004-1010	
DAMPER RUBBER (Ref # 26)	92075-1044	
FUSE,10A,L=30M/M (Ref # 27)	26006-1002	
FUSE,15A,L=30M/M (Ref # 28)	26006-1003	
COVER,REAR HARNESS (Ref # 29)	14025-1183	
WIRE,LEAD (Ref # 30)	26011-1061	
TUBE,P.V.C,8X9X200 (Ref # 31)	92059-1150	
TUBE,P.V.C,8X9X200 (Ref # 31)	92059-1150	