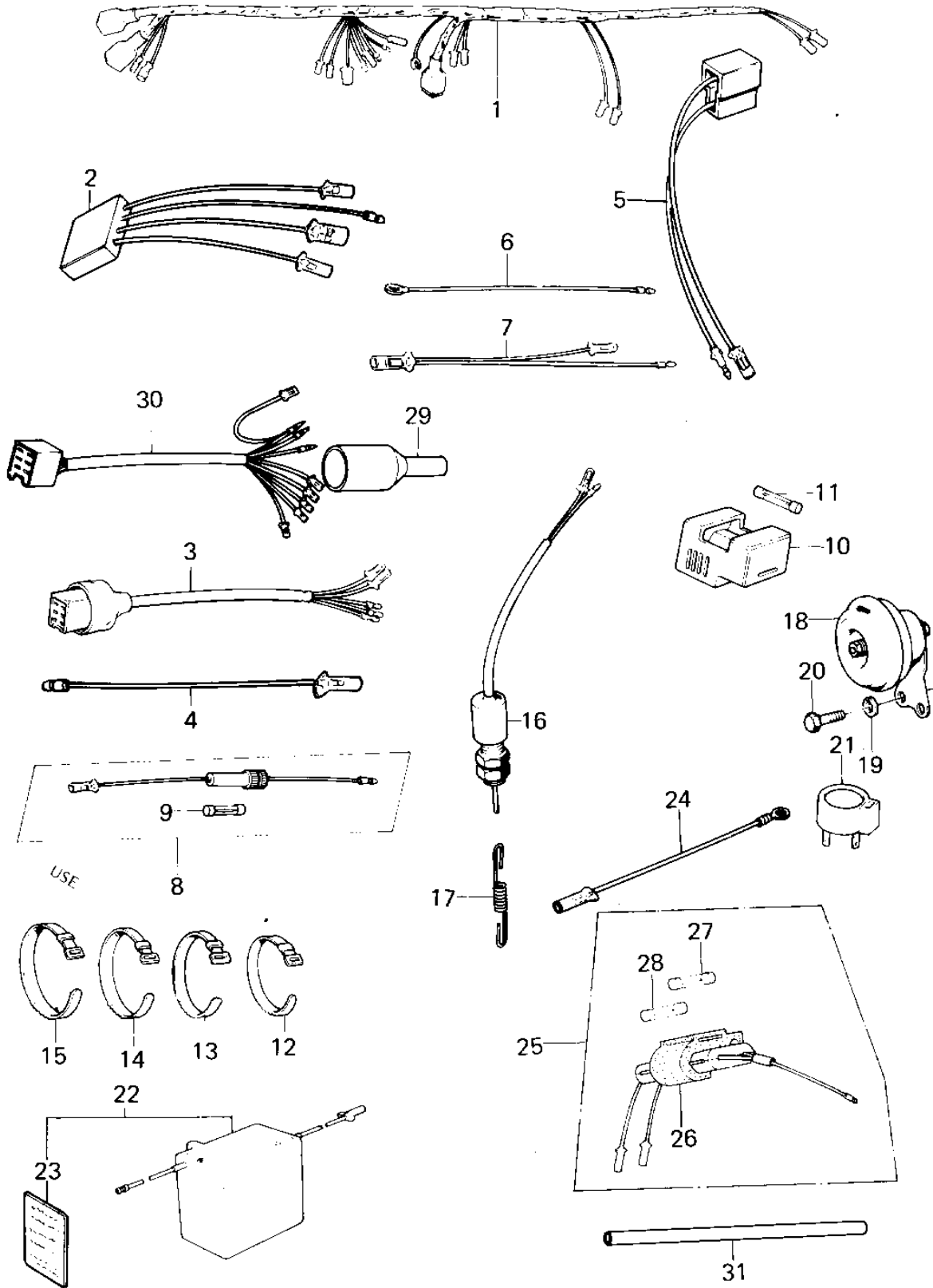


1980 KM100 PARTS DIAGRAM

CHASSIS ELECTRICAL EQUIPMENT



1980 KM100 PARTS LIST

CHASSIS ELECTRICAL EQUIPMENT

| ITEM NAME | PART NUMBER | QUANTITY |
|---------------------------------|-------------|----------|
| WIRING HARNESS,MAIN (Ref # 1) | 26001-118 | 1 |
| WIRING HARNESS MAIN (Ref # 1) | 26001-1067 | 1 |
| WIRING HARNESS,MAIN (Ref # 1) | 26001-1108 | 1 |
| WIRING HARNESS,REAR (Ref # 2) | 26002-056 | 1 |
| WIRE,LEAD (Ref # 3) | 26011-1042 | 1 |
| WIRE,LEAD (Ref # 3) | 26011-1042 | 1 |
| WIRE,LEAD (Ref # 4) | 26011-094 | 1 |
| WIRE,RECTIFIER LEAD (Ref # 5) | 26011-074 | 1 |
| LEAD WIRE,SIGNAL LAMP (Ref # 6) | 26011-063 | 1 |
| LEAD WIRE (Ref # 7) | 26011-042 | 1 |
| FUSE ASSY (Ref # 8) | 26004-017 | 1 |
| FUSE 10A (Ref # 9) | 26006-003 | 1 |
| HOLDER,SPARE FUSE (Ref # 10) | 26016-003 | 1 |
| FUSE 10A (Ref # 11) | 26006-003 | 1 |
| BAND,SHORT (Ref # 12) | 92072-030 | 5 |
| BAND,MIDDLE (Ref # 13) | 92072-031 | 2 |
| BAND,WIRING HARNESS (Ref # 14) | 92072-056 | 2 |
| BAND,LONG (Ref # 15) | 92072-032 | 1 |
| SWITCH-BRAKE LAMP (Ref # 16) | 27010-015 | 1 |
| SWITCH,BRAKE LIGHT (Ref # 16) | 27010-025 | 1 |
| SPRING-BRAKE LAMP SW (Ref # 17) | 27011-011 | 1 |
| HORN (Ref # 18) | 27003-073 | 1 |
| HORN (Ref # 18) | 27003-060 | 1 |
| WASHER SPRING 6MM (Ref # 19) | 461F0600 | 2 |
| BOLT,6X10 (Ref # 20) | 112G0610 | 2 |
| RELAY-TURN SIGNAL (Ref # 21) | 27002-013 | 1 |
| YUA BAT 6N4-2A-5 (Ref # 22) | K26012-020 | 1 |
| YUA BAT 6N6-1D-2 (Ref # 22) | K26012-034 | 1 |
| YUA BAT 6N6-1D-2 (Ref # 22) | K26012-034 | 1 |

1980 KM100 PARTS LIST

CHASSIS ELECTRICAL EQUIPMENT

| ITEM NAME | PART NUMBER | QUANTITY |
|----------------------------------|-------------|----------|
| LABEL-WARNING,BATTERY (Ref # 23) | 56040-1036 | 1 |
| WIRE,LEAD (Ref # 24) | 26011-093 | 1 |
| FUSE ASSY (Ref # 25) | 26004-1010 | 1 |
| DAMPER RUBBER (Ref # 26) | 92075-1044 | 1 |
| FUSE,10A,L=30M/M (Ref # 27) | 26006-1002 | 1 |
| FUSE,15A,L=30M/M (Ref # 28) | 26006-1003 | 2 |
| COVER,REAR HARNESS (Ref # 29) | 14025-1183 | 1 |
| WIRE,LEAD (Ref # 30) | 26011-1061 | 1 |
| TUBE,P.V.C,8X9X200 (Ref # 31) | 92059-1150 | 3 |