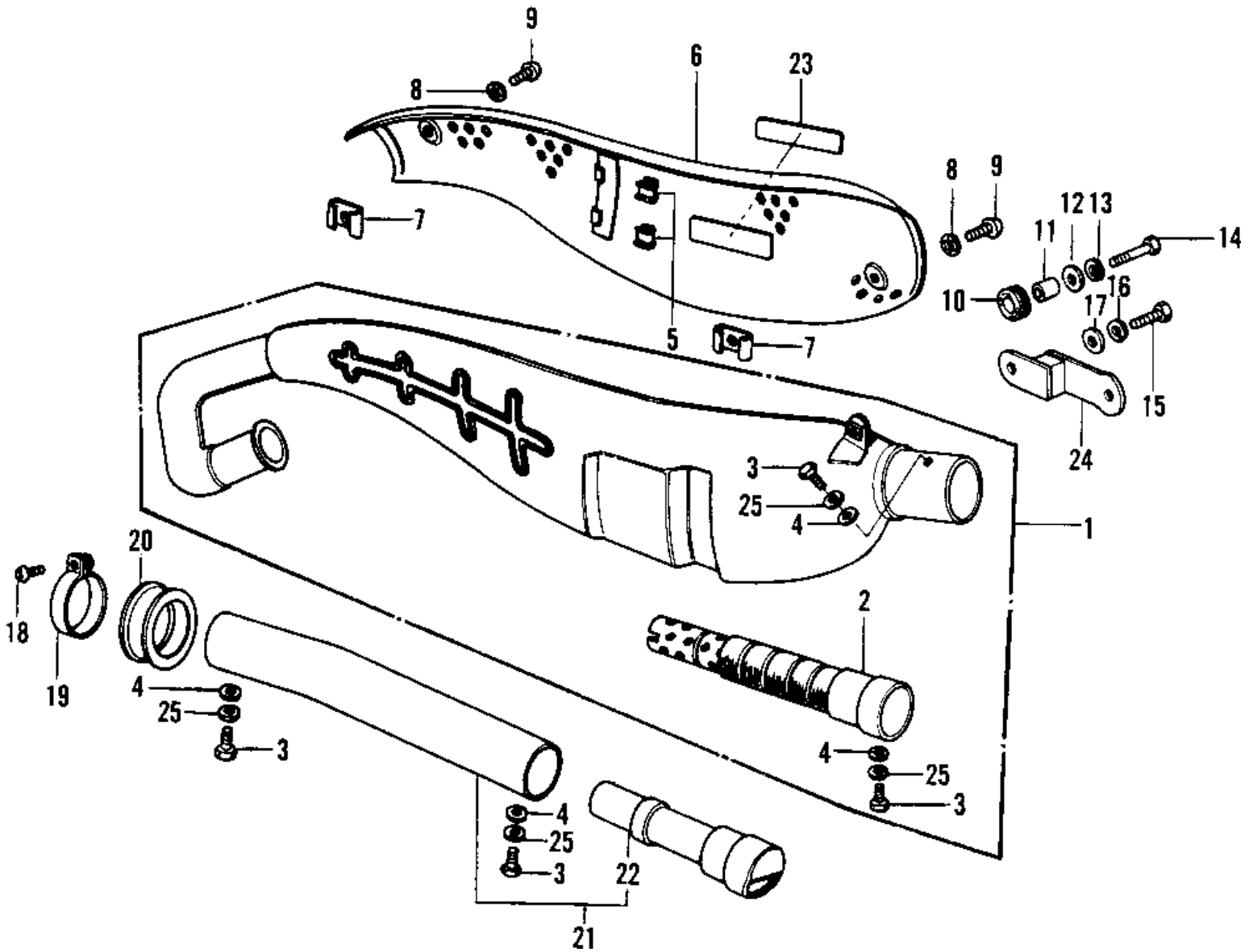


# 1976 KD125-A2 PARTS DIAGRAM

MUFFLER



# 1976 KD125-A2 PARTS LIST

## MUFFLER

ITEM NAME	PART NUMBER	QUANTITY
MUFFLER ASSY (Ref # 1)	18001-154	1
MUFFLER ASSY (Ref # 1)	18001-154	1
BAFFLE TUBE (Ref # 2)	18033-077	1
BOLT-UPSET,6X12 (Ref # 3)	112G0612	4
WASHER-PLAIN (Ref # 4)	92022-183	4
WASHER OIL PUMP BANJO (Ref # 4)	92022-077	4
INSULATOR (Ref # 5)	18065-007	2
COVER,MUFFLER (Ref # 6)	18064-016	1
COVER,MUFFLER (Ref # 6)	18064-016	1
INSULATOR,HEAT (Ref # 7)	18065-010	2
WASHER LOCK 6MM (Ref # 8)	463H0600	2
SCREW PAN HEAD 6X12 (Ref # 9)	220B0612	2
DAMPER RUBBER-MUFFLER (Ref # 10)	18063-005	1
COLLAR (Ref # 11)	92027-102	1
WASHER,8X26X2.3 (Ref # 12)	92022-1564	1
WASHER SPRING 8MM (Ref # 13)	461F0800	1
BOLT-SMALL-UPSET,8X30 (Ref # 14)	115G0830	1
BOLT-UPSET,6X16 (Ref # 15)	112G0616	1
BOLT,HEX HEAD,6X14 (Ref # 15)	92001-121	1
WASHER SPRING 6MM (Ref # 16)	461F0600	1
WASHER PLAIN 6MM (Ref # 17)	411B0600	1
WASHER PLAIN 6MM (Ref # 17)	410B0600	1
SCREW,PAN HEAD,5X30 (Ref # 18)	92011-032	1
CLAMP,SPARK ARRESTOR (Ref # 19)	92037-122	1
CONNECTOR,BAFFLETUBE (Ref # 20)	92093-1042	1
ARRESTER,SPARK (Ref # 21)	18077-001	1
BAFFLE TUBE,ARESTOR (Ref # 22)	18033-086	1
EMBLEM,SIDE COVER (Ref # 23)	56018-219	1
MARK,MUFFLER COVER (Ref # 23)	56018-1037	1