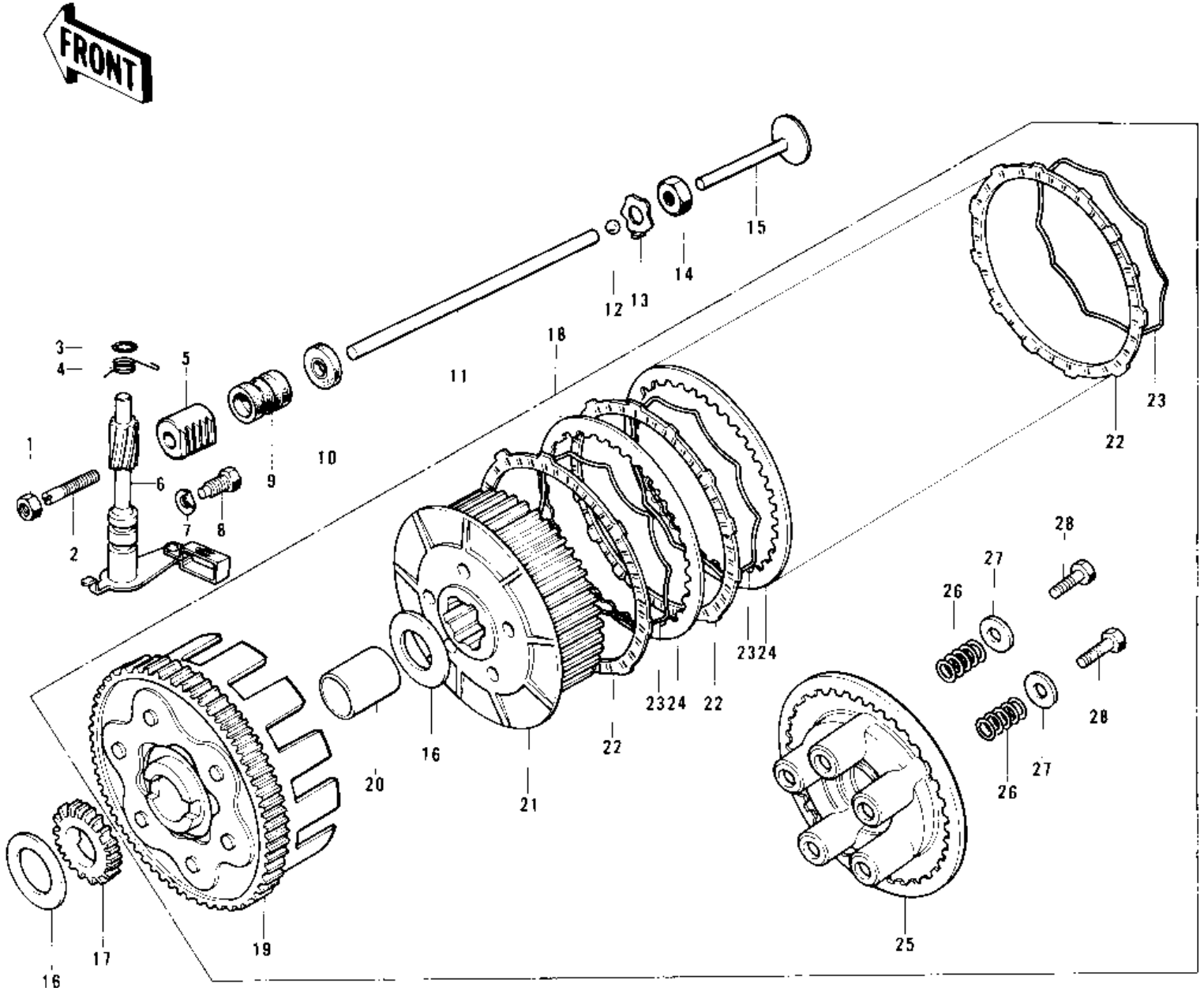


# 1976 KE125 PARTS DIAGRAM

CLUTCH (76-'79)



# 1976 KE125 PARTS LIST

## CLUTCH ('76-'79)

| ITEM NAME                        | PART NUMBER | QUANTITY |
|----------------------------------|-------------|----------|
| NUT 6MM (Ref # 1)                | 311B0600    | 1        |
| NUT 6MM (Ref # 1)                | 311B0600    | AL       |
| SCREW,SLOTTED,6X26 (Ref # 2)     | 92014-015   | 1        |
| "O" RING, 10MM (Ref # 3)         | 670B2010    | 1        |
| SPRING,CLUTCH RELESE (Ref # 4)   | 92083-024   | 1        |
| ROD,CLTCH RELESE PUSH (Ref # 5)  | 13116-026   | 1        |
| SHAFT ASY,CLTCH RELES (Ref # 6)  | 13234-003   | 1        |
| WASHER,LOCK (Ref # 7)            | 92031-009   | 1        |
| BOLT,CLUTCH RELEASE (Ref # 8)    | 92003-130   | 1        |
| COLLAR (Ref # 9)                 | 92027-207   | 1        |
| OIL SEAL,PUSH ROD (Ref # 10)     | 92050-058   | 1        |
| ROD,CLUTCH PUSH,LONG (Ref # 11)  | 13116-027   | 1        |
| BALL STEEL 7/32' (Ref # 12)      | 600A0700    | 1        |
| WASHER-LOCK,14MM (Ref # 13)      | 92024-046   | 1        |
| NUT 14MM (Ref # 14)              | 315B1400    | 1        |
| PUSHER-CLTCH SPRG PLT (Ref # 15) | 13116-016   | 1        |
| WASHER,PLAIN (Ref # 16)          | 92022-270   | 2        |
| PINION,KICKSTARTER (Ref # 17)    | 13075-010   | 1        |
| CLUTCH-ASSY (Ref # 18)           | 13081-1053  | 1        |
| HOUSING CLUTCH (Ref # 19)        | 13095-1034  | 1        |
| BUSHING,CLUTCH (Ref # 20)        | 92028-138   | 1        |
| HUB,CLUTCH (Ref # 21)            | 13087-038   | 1        |
| PLATE-FRICTION (Ref # 22)        | 13088-1015  | 5        |
| RING-CLUTCH STEEL (Ref # 23)     | 13229-002   | 5        |
| PLATE CLUTCH STEEL (Ref # 24)    | 13089-003   | 4        |
| PLATE-CLUTCH SPRING (Ref # 25)   | 13187-004   | 1        |
| SPRING,CLUTCH (Ref # 26)         | 92081-123   | 5        |
| WASHER-PLAIN,5MM (Ref # 27)      | 92022-167   | 5        |
| BOLT,5X18 (Ref # 28)             | 92003-078   | 5        |