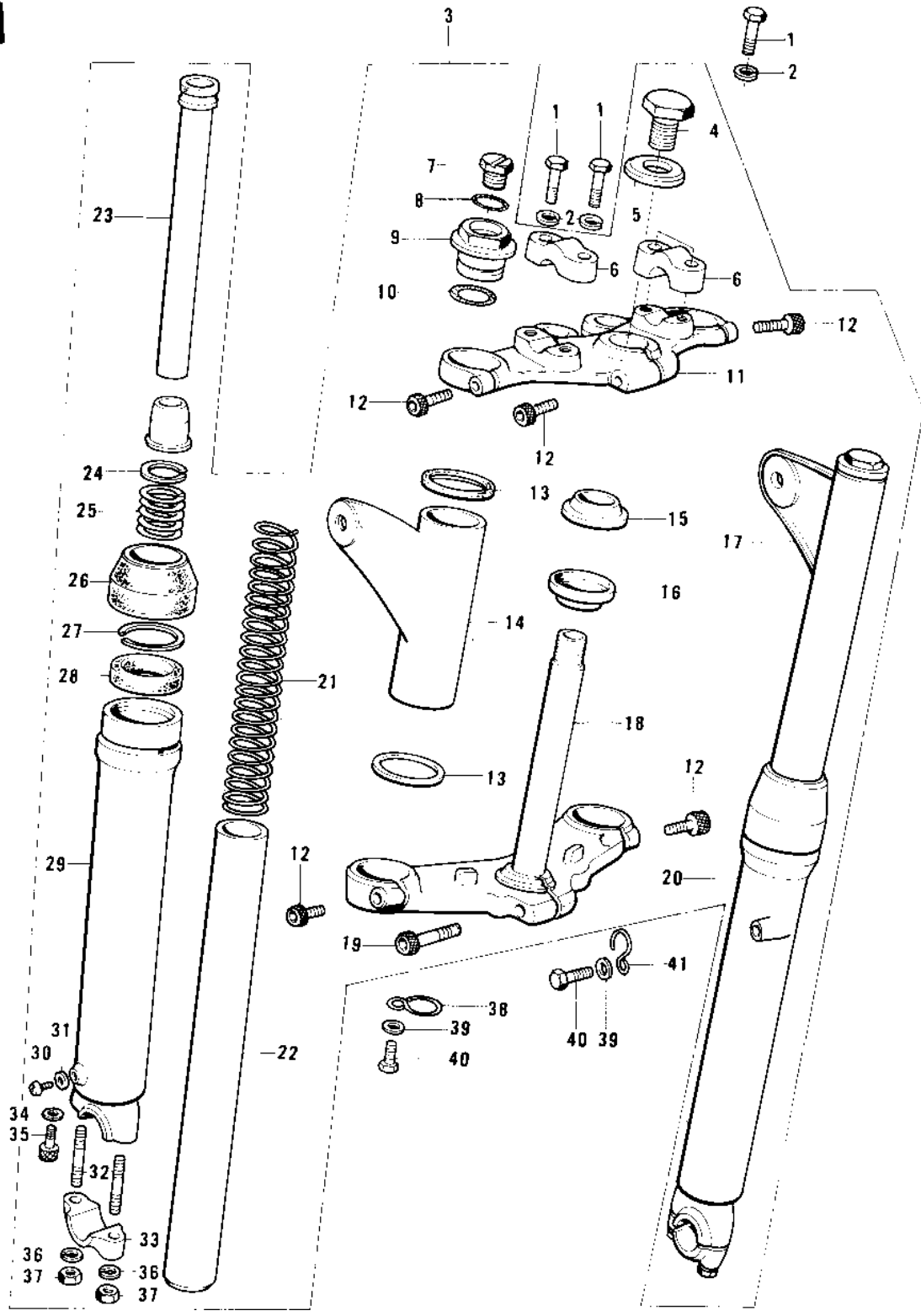


# 1976 KE125 PARTS DIAGRAM

FRONT FORK (76-79)



# 1976 KE125 PARTS LIST

## FRONT FORK ('76-'79)

ITEM NAME	PART NUMBER	QUANTITY
BOLT 8X38 (Ref # 1)	92001-1405	4
WASHER SPRING 6MM (Ref # 2)	461F0600	4
FORK-FRONT (Ref # 3)	44001-129	1
BOLT,STEERING STEM (Ref # 4)	44041-072	1
WASHER STEERING STEM (Ref # 5)	44043-056	1
HOLDER,HANDLEBAR (Ref # 6)	46012-014	2
BOLT,HEX HEAD,12MM (Ref # 7)	44041-069	2
O RING (Ref # 8)	44045-048	2
BOLT,FORK TOP (Ref # 9)	44032-011	2
"O" RING,FORK TOP (Ref # 10)	44046-021	2
HEAD,STEERING STEM (Ref # 11)	44039-069	1
BOLT,HEX HEAD,8X34 (Ref # 12)	44041-070	7
GASKET,FORK COVER (Ref # 13)	44045-049	4
COVER,L.H FORK (Ref # 14)	44033-063	1
CONE STERNG BERG LOW (Ref # 15)	92047-010	1
SEAL,STEERING STEM (Ref # 16)	44010-027	1
COVER,R.H FORK (Ref # 17)	44034-063	1
STEM,STEERING,GMN (Ref # 18)	44037-1030	1
BOLT,SPECIAL 10X42 (Ref # 19)	44041-073	1
TUBE,RH,FORK OUTER (Ref # 20)	44006-1045	1
SPRING,FORK (Ref # 21)	44026-053	2
TUBE,FORK INNER (Ref # 22)	44013-047	2
CYLINDER-FORK (Ref # 23)	44022-033	2
RING (Ref # 24)	44025-002	2
SPRING,FORK CYLINDER (Ref # 25)	44026-054	2
DUST SHIELD,FORK (Ref # 26)	44010-026	2
CIRCLIP,45MM (Ref # 2)	44044-020	2
OIL SEAL,FORK (Ref # 28)	44009-018	2
TUBE,LH,FORK OUTER (Ref # 29)	44005-1045	1

## 1976 KE125 PARTS LIST

### FRONT FORK ('76-'79)

ITEM NAME	PART NUMBER	QUANTITY
BOLT-UPSET,6X8 (Ref # 30)	112B0608	2
GASKET,DRAIN PLUG (Ref # 31)	44045-047	2
STUD,8X35 (Ref # 32)	92004-1009	4
STUD,8X35 (Ref # 32)	92004-1009	4
STUD,8X35 (Ref # 32)	92004-1009	4
HOLDER,FRONT AXLE (Ref # 33)	44063-009	2
GASKET,FORK CYL BOLT (Ref # 34)	44045-051	2
BOLT,FORK CYLINDER (Ref # 35)	44041-078	2
WASHER SPRING 8MM (Ref # 36)	461F0800	4
NUT,LOCK,8MM (Ref # 37)	92015-1124	4
NUT,LOCK,8MM (Ref # 37)	92015-1124	4
CLAMP (Ref # 38)	92037-083	1
WASHER PLAIN 6MM (Ref # 39)	411B0600	2
BOLT,6X10 (Ref # 40)	112G0610	2
BOLT-UPSET,6X12 (Ref # 40)	112G0612	2
CLAMP,CABLE (Ref # 41)	92037-092	1