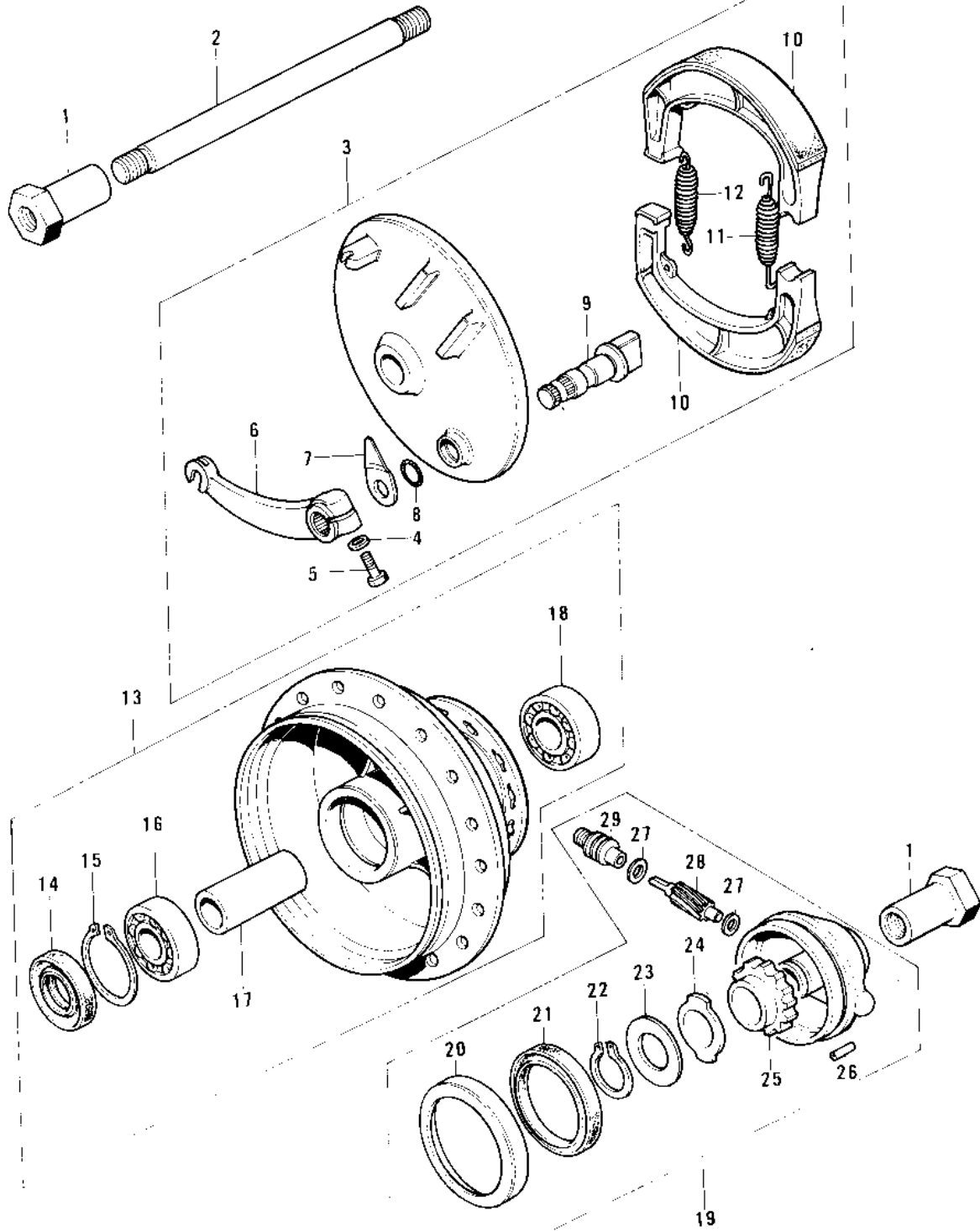


1979 KE125 PARTS DIAGRAM

FRONT HUB/BRAKE ('76-79)



1979 KE125 PARTS LIST

FRONT HUB/BRAKE ('76-'79)

| ITEM NAME | PART NUMBER | QUANTITY |
|--------------------------------------|--------------|----------|
| COLLAR,FRONT AXLE (Ref # 1) | 41069-024 | 2 |
| AXLE,FRONT (Ref # 2) | 41068-043 | 1 |
| PANEL ASY,FR BK,BUFF (Ref # 3) | 41035-049-80 | 1 |
| PANEL-ASY,FR BRK BUFF (Ref # 3) | 41035-076-80 | 1 |
| WASHER PLAIN 6MM (Ref # 4) | 410B0600 | 1 |
| BOLT 6X22 (Ref # 5) | 112B0622 | 1 |
| LEVER,FRNT BRAKE CAM (Ref # 6) | 41053-020 | 1 |
| INDICATOR FRONT BRAKE SHOE (Ref # 7) | 41085-002 | 1 |
| "0" RING,11MM (Ref # 8) | 92055-004 | 1 |
| CAM SHAFT,FRONT BRAKE (Ref # 9) | 41050-012 | 1 |
| SHOE,BRAKE (Ref # 10) | 41048-015 | 2 |
| SPRING,BRAKE SHOE (Ref # 11) | 92081-1766 | 1 |
| SPRING,BRAKE SHOE (Ref # 12) | 92081-1550 | 1 |
| DRUM-ASSY,FR BRK,BUFF (Ref # 13) | 41034-031-80 | 1 |
| OIL SEAL,FR BK DRUM (Ref # 14) | 92050-059 | 1 |
| CIRCLIP.37MM (Ref # 15) | 481J3700 | 1 |
| BEARING BALL #6301 (Ref # 16) | 601B6301 | 1 |
| SPACER,FR HUB BEARING (Ref # 17) | 41039-025 | 1 |
| BEARING BALL #6201 (Ref # 18) | 601B6201 | 1 |
| CASE ASSY,SPEED GEAR (Ref # 19) | 41078-009 | 1 |
| DUST COVER (Ref # 20) | 41042-013 | 1 |
| OIL SEAL (Ref # 21) | 654A405208 | 1 |
| CIRCLIP,19MM (Ref # 22) | 480J1900 | 1 |
| WASHER,THRUST (Ref # 23) | 41065-004 | 1 |
| RECEIVER,SPEED GEAR (Ref # 24) | 41064-011 | 1 |
| GEAR,SPEEDOMETER (Ref # 25) | 41059-024 | 1 |
| PIN,SPRING (Ref # 26) | 41082-001 | 1 |
| WASHER THRST SPD PINI (Ref # 27) | 41063-001 | 1 |
| PINION,SPEEDOMETER (Ref # 28) | 41060-015 | 1 |

1979 KE125 PARTS LIST

FRONT HUB/BRAKE (76-79)

| ITEM NAME | PART NUMBER | QUANTITY |
|----------------------------------|-------------|----------|
| BUSH,SPEEDMETER CABLE (Ref # 29) | 41062-005 | 1 |