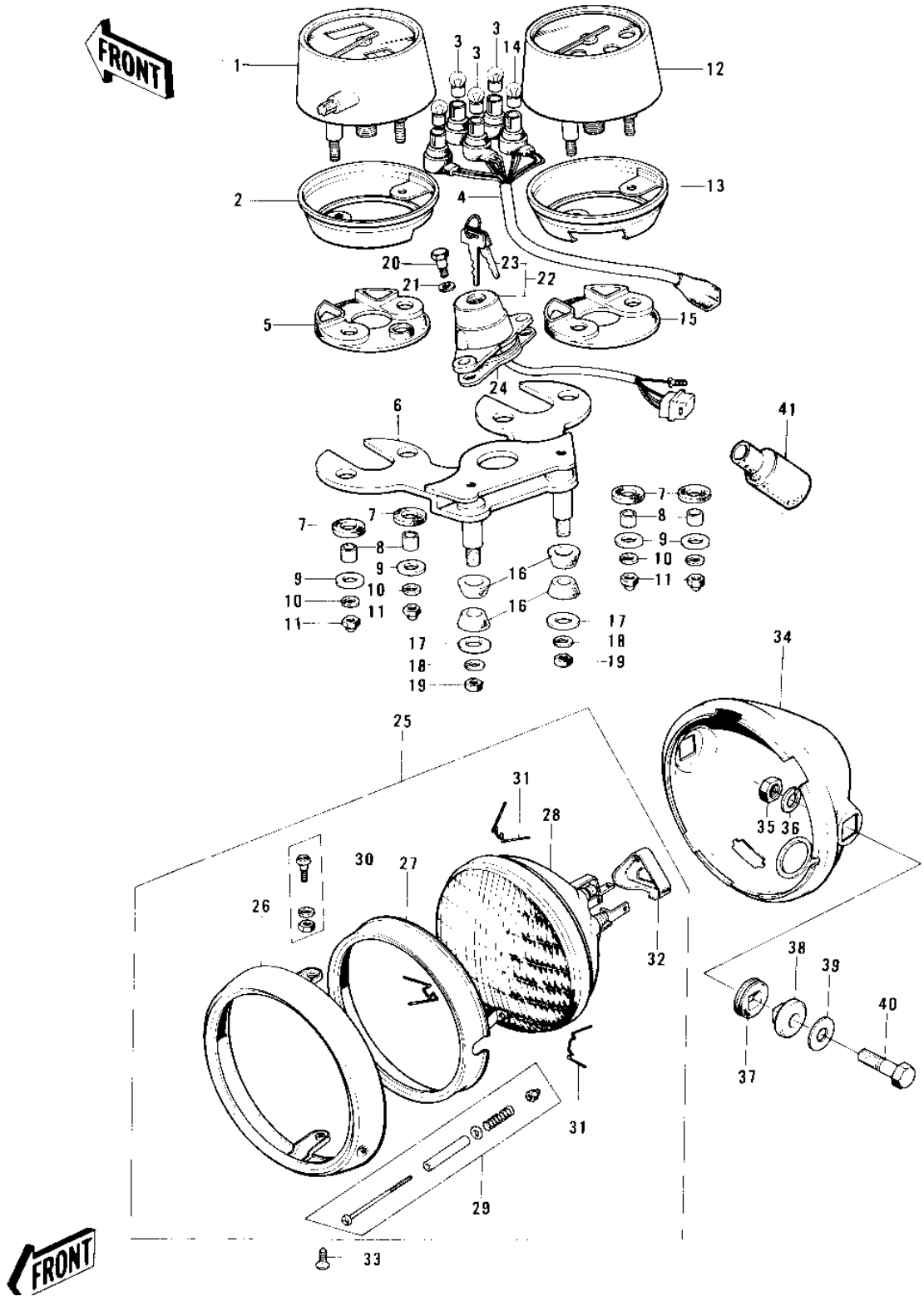


# 1976 KE125 PARTS DIAGRAM

METERS/IGNITION SWITCH/HEADLIGHT ('76-7)

F



# 1976 KE125 PARTS LIST

METERS/IGNITION SWITCH/HEADLIGHT ('76-'7)

ITEM NAME	PART NUMBER	QUANTITY
SPEEDOMETER ASSY,MPH (Ref # 1)	25005-110	1
*** N.L.A.*** (Canada) (Ref # 1)	25005-112	1
COVER-SPEEDOMETER (Ref # 2)	25012-017	1
BULB 6V 1.5W (Ref # 3)	92069-024	4
SOCKET,SPEEDOMETER (Ref # 4)	25011-038	1
SHOCK DAMPER,METER (Ref # 5)	25019-018	1
BRACKET,METER (Ref # 6)	25008-034	1
DAMPER RUBBER,METER (Ref # 7)	25019-019	4
COLLAR,METER FITTING (Ref # 8)	25021-004	4
WASHER PL 5.2X18X1.2 (Ref # 9)	92022-285	4
NUT-CAP,5MM (Ref # 11)	322N0500	4
TACHOMETER ASSY (Ref # 12)	25015-027	1
COVER,TACHOMETER (Ref # 13)	25012-018	1
BULB-6V 3W (Ref # 14)	92069-053	1
DAMPER RUBBER,METER (Ref # 15)	25019-020	1
DAMPER RUBBER,METER (Ref # 16)	92075-248	4
WASHER 6.5X22X1.6T (Ref # 17)	92022-237	2
WASHER SPRING 6MM (Ref # 18)	461F0600	2
NUT 6MM (Ref # 19)	311B0600	2
BOLT-HEX HEAD,6MM (Ref # 20)	92007-026	2
WASHER PLAIN 8MM (Ref # 21)	410B0800	2
SWITCH ASSY.IGNITION (Ref # 22)	27005-059	1
SWITCH ASSY,IGNITION (Ref # 22)	27005-1023	1
SWITCH ASSY,IGNITION (Ref # 22)	27005-080	1
KEY SET #431 (Ref # 23)	27008-054-31	1
KEY SET,#450 (Ref # 23)	27008-054-50	1
KEY,BLANK (Ref # 23)	27008-1024	AR
KEY,BLANK (Ref # 23)	27008-1025	AR
KEY,BLANK (Ref # 23)	27008-1026	AR

# 1976 KE125 PARTS LIST

METERS/IGNITION SWITCH/HEADLIGHT ('76-'7)

ITEM NAME	PART NUMBER	QUANTITY
KEY,BLANK (Ref # 23)	27008-1027	AR
DAMPER RUBBER (Ref # 24)	92075-077	1
LAMP UNIT,HEAD (Ref # 25)	23003-021	1
RIM,HEAD LAMP (Ref # 26)	23006-042	1
RETAINER,SEALED BEAM (Ref # 27)	23072-002	1
SEALED BEAM UNIT (Ref # 28)	23007-055	1
SCREW ASSY,FOCUS AJST (Ref # 29)	23013-5001	1
SCREW SET,LENS UNIT (Ref # 30)	23013-007	1
CLAMP,HEAD LAMP LENS (Ref # 31)	23009-015	3
COVER,HD LAMP SOCKET (Ref # 32)	23081-001	1
SCREW,PAN HEAD,5X14 (Ref # 33)	23019-025	1
BODY,HEAD LAMP,F.BLAK (Ref # 34)	23005-050-21	1
NUT,10MM (Ref # 35)	314B1000	2
WASHER SPRING 10MM (Ref # 36)	461F1000	2
DAMPER RUBBER (Ref # 37)	23066-011	2
COLLAR (Ref # 38)	23052-005	2
WASHER-PLAIN,10MM (Ref # 39)	411D1000	2
BOLT,HEX HEAD,10X30 (Ref # 40)	92007-041	2
COVER,WIRING HARNESS (Ref # 41)	26009-008	1