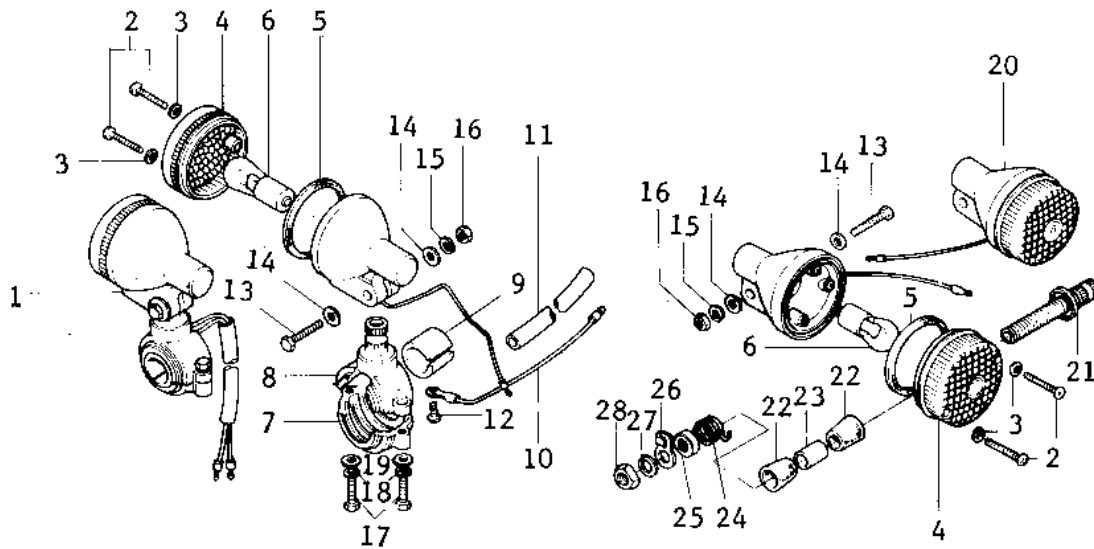


1972 F7-A PARTS DIAGRAM

TURN SIGNALS (F7-B)



1972 F7-A PARTS LIST

TURN SIGNALS (F7-B)

| ITEM NAME | PART NUMBER | QUANTITY |
|--|-------------|----------|
| LAMP ASY-FR TURN SIG (Ref # 1) | 23037-005 | |
| SCREW-PAN HEAD,4X20 (Ref # 2) | 220E0420A | |
| WASHER-PLAIN,4MM (Ref # 3) | 23058-002 | |
| LENS,TURN SIGNAL LAMP (Ref # 4) | 23048-1001 | |
| GASKET-TURN SIGNAL LAMP LENS (Ref # 5) | 23050-003 | |
| BULB,6V 21CP (Ref # 6) | 92069-056 | |
| BRACKET,SIGNAL LAMP (Ref # 7) | 23051-1013 | |
| BRACKET,FRNT TURN SIG (Ref # 8) | 23051-1004 | |
| DAMPER RUBBER (Ref # 9) | 23066-003 | |
| WIRE-TURN SIGNAL LEAD (Ref # 10) | 26011-061 | |
| COVER-WIRING HARNESS (Ref # 11) | 26009-004 | |
| SCREW PAN HEAD 3X5 (Ref # 12) | 220B0305A | |
| BOLT-UPSET (Ref # 13) | 112G0630 | |
| WASHER PLAIN 6MM (Ref # 14) | 410B0600 | |
| WASHER SPRING 6MM (Ref # 15) | 461F0600 | |
| NUT 6MM (Ref # 16) | 311B0600 | |
| BOLT (Ref # 17) | 110N0516 | |
| WASHER SPRING 5MM (Ref # 18) | 461F0500 | |
| WASHER-PLAIN,5MM (Ref # 19) | 410D0500 | |
| LAMP-REAR TURN SIGNAL (Ref # 20) | 23040-033 | |
| BKT-RR SIGNAL LAMP (Ref # 21) | 23051-037 | |
| DAMPER RUBBER (Ref # 22) | 92075-148 | |
| COLLAR 12.7X17.3X30 (Ref # 23) | 92027-168 | |
| SPRING (Ref # 24) | 92081-111 | |
| WASHER CUP 12.5X35X4T (Ref # 25) | 92022-235 | |
| CLAMP-RR SIGNAL LAMP (Ref # 26) | 92037-087 | |
| WASHER SPRING 12MM (Ref # 27) | 461F1200 | |
| NUT-HEX-FINE,12MM (Ref # 28) | 315B1200 | |