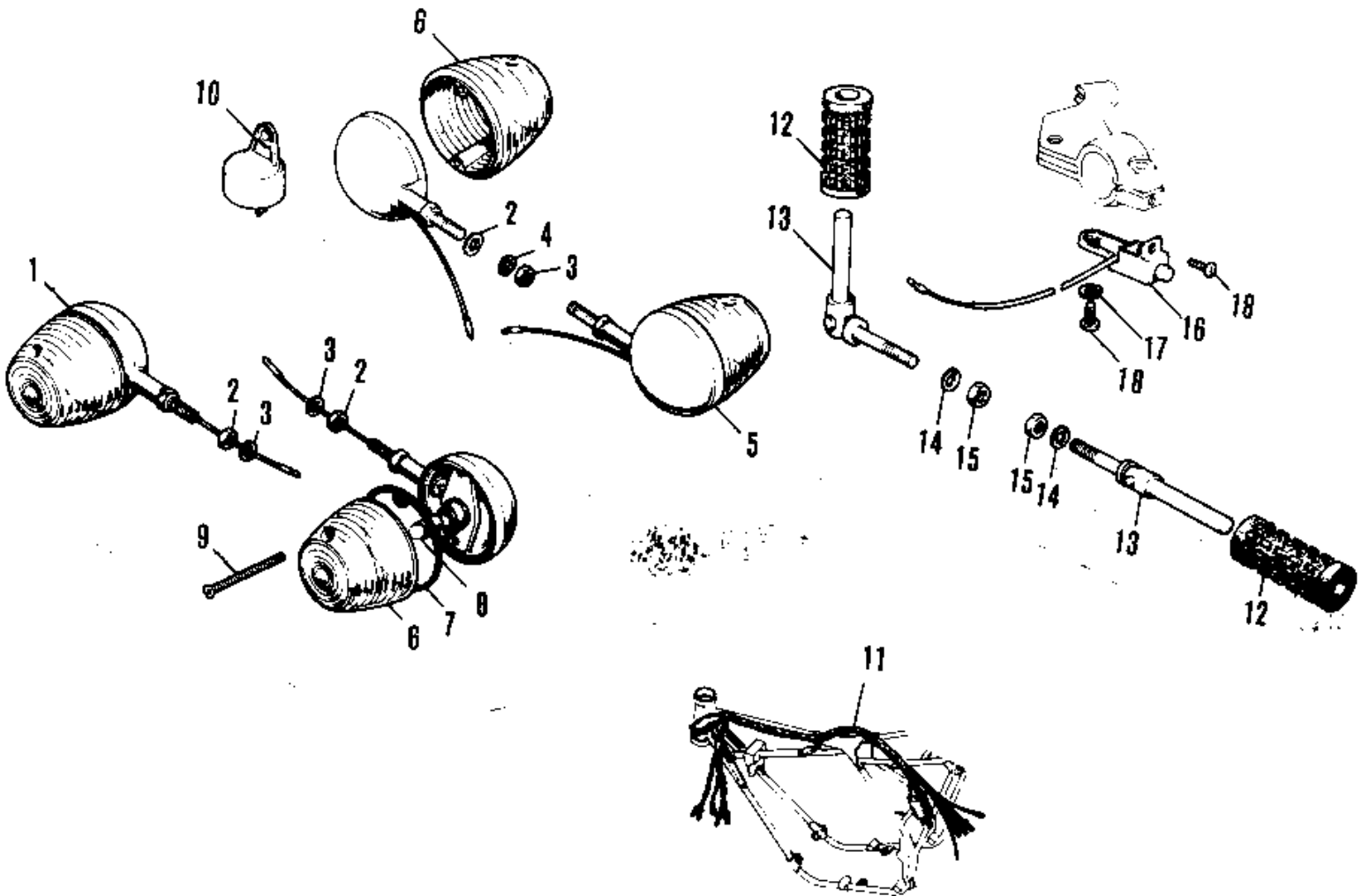


1972 F7-A PARTS DIAGRAM

OPTIONAL PARTS (F7/F7-A)



1972 F7-A PARTS LIST

OPTIONAL PARTS (F7/F7-A)

ITEM NAME	PART NUMBER	QUANTITY
FR. TURN SIG. LAMP (O (Ref # 1)	23040-027	
NUT 10MM (Ref # 2)	315B1000	
WASHER PLAIN 10MM (Ref # 3)	410B1000	
WASHER SPRING 10MM (Ref # 4)	461F1000	
RR TURN SIG LAMP (OPT (Ref # 5)	23043-024	
LENS TURN SIGNAL LAMP (Ref # 6)	23048-011	
BULB,6V 8W (Ref # 8)	92069-042	
SCREW OVL CNTSNK 3X15 (Ref # 9)	222B0315A	
RELAY-TURN SIG. (OPT) (Ref # 10)	27002-010	
WIRING HARNESS (OPT) (Ref # 11)	26001-056	
RUBBER REAR FOOTREST (Ref # 12)	92076-008	
FOOTREST BAR REAR (Ref # 13)	34027-013	
WASHER SPRING 10MM (Ref # 14)	461F1000	
NUT,10MM (Ref # 15)	314B1000	
SWITCH ASSY-ENG STOP (Ref # 16)	46027-006	
WASHER SPRING 3MM (Ref # 17)	461F0300	
SCREW-PAN-HEAD 3X6 (Ref # 18)	220B0306	