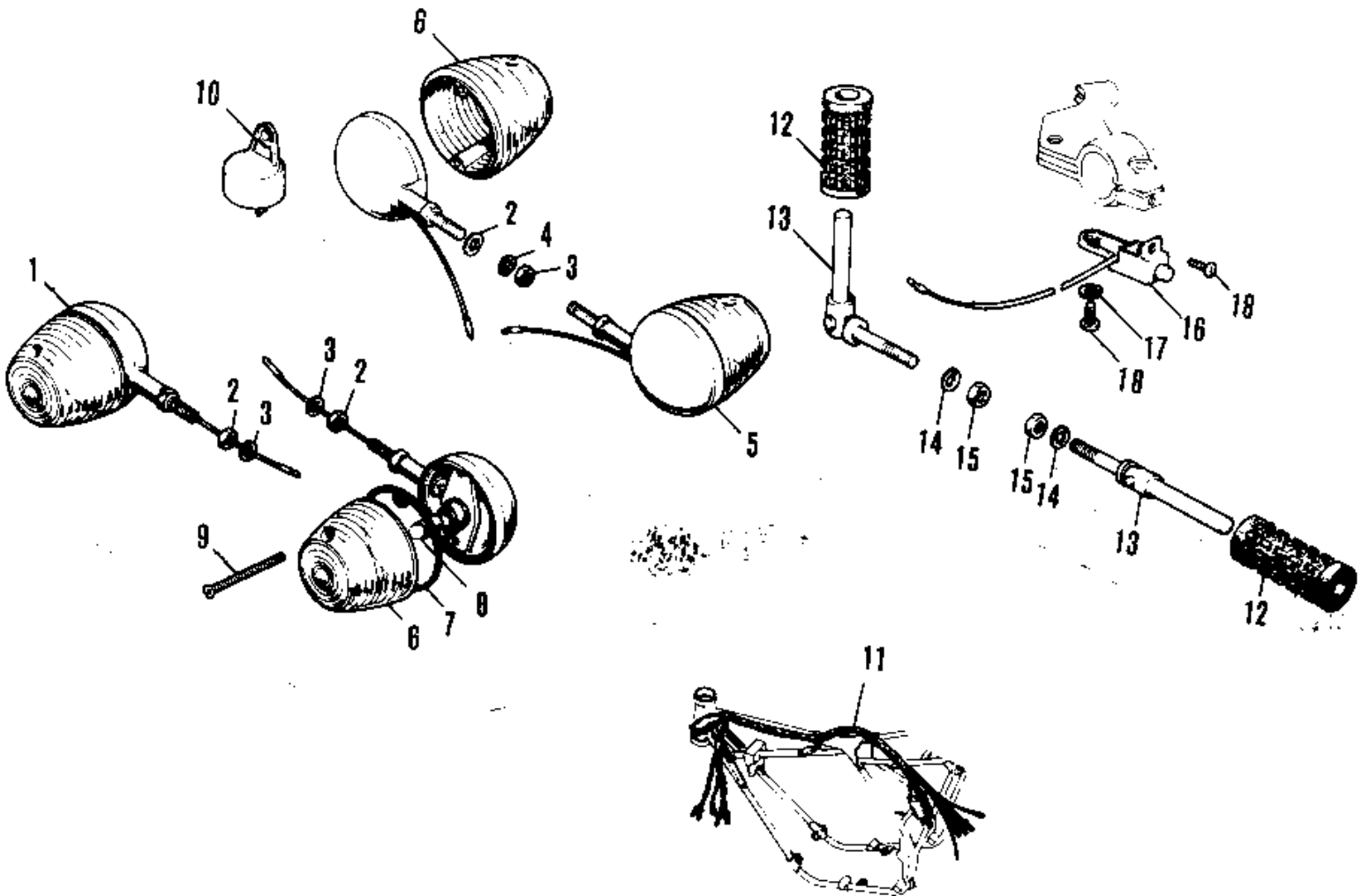


# 1975 F7-D PARTS DIAGRAM

OPTIONAL PARTS (F7/F7-A)



## 1975 F7-D PARTS LIST

### OPTIONAL PARTS (F7/F7-A)

| ITEM NAME                        | PART NUMBER | QUANTITY |
|----------------------------------|-------------|----------|
| FR. TURN SIG. LAMP (O (Ref # 1)  | 23040-027   |          |
| NUT 10MM (Ref # 2)               | 315B1000    |          |
| WASHER PLAIN 10MM (Ref # 3)      | 410B1000    |          |
| WASHER SPRING 10MM (Ref # 4)     | 461F1000    |          |
| RR TURN SIG LAMP (OPT (Ref # 5)  | 23043-024   |          |
| LENS TURN SIGNAL LAMP (Ref # 6)  | 23048-011   |          |
| BULB,6V 8W (Ref # 8)             | 92069-042   |          |
| SCREW OVL CNTSNK 3X15 (Ref # 9)  | 222B0315A   |          |
| RELAY-TURN SIG. (OPT) (Ref # 10) | 27002-010   |          |
| WIRING HARNESS (OPT) (Ref # 11)  | 26001-056   |          |
| RUBBER REAR FOOTREST (Ref # 12)  | 92076-008   |          |
| FOOTREST BAR REAR (Ref # 13)     | 34027-013   |          |
| WASHER SPRING 10MM (Ref # 14)    | 461F1000    |          |
| NUT,10MM (Ref # 15)              | 314B1000    |          |
| SWITCH ASSY-ENG STOP (Ref # 16)  | 46027-006   |          |
| WASHER SPRING 3MM (Ref # 17)     | 461F0300    |          |
| SCREW-PAN-HEAD 3X6 (Ref # 18)    | 220B0306    |          |