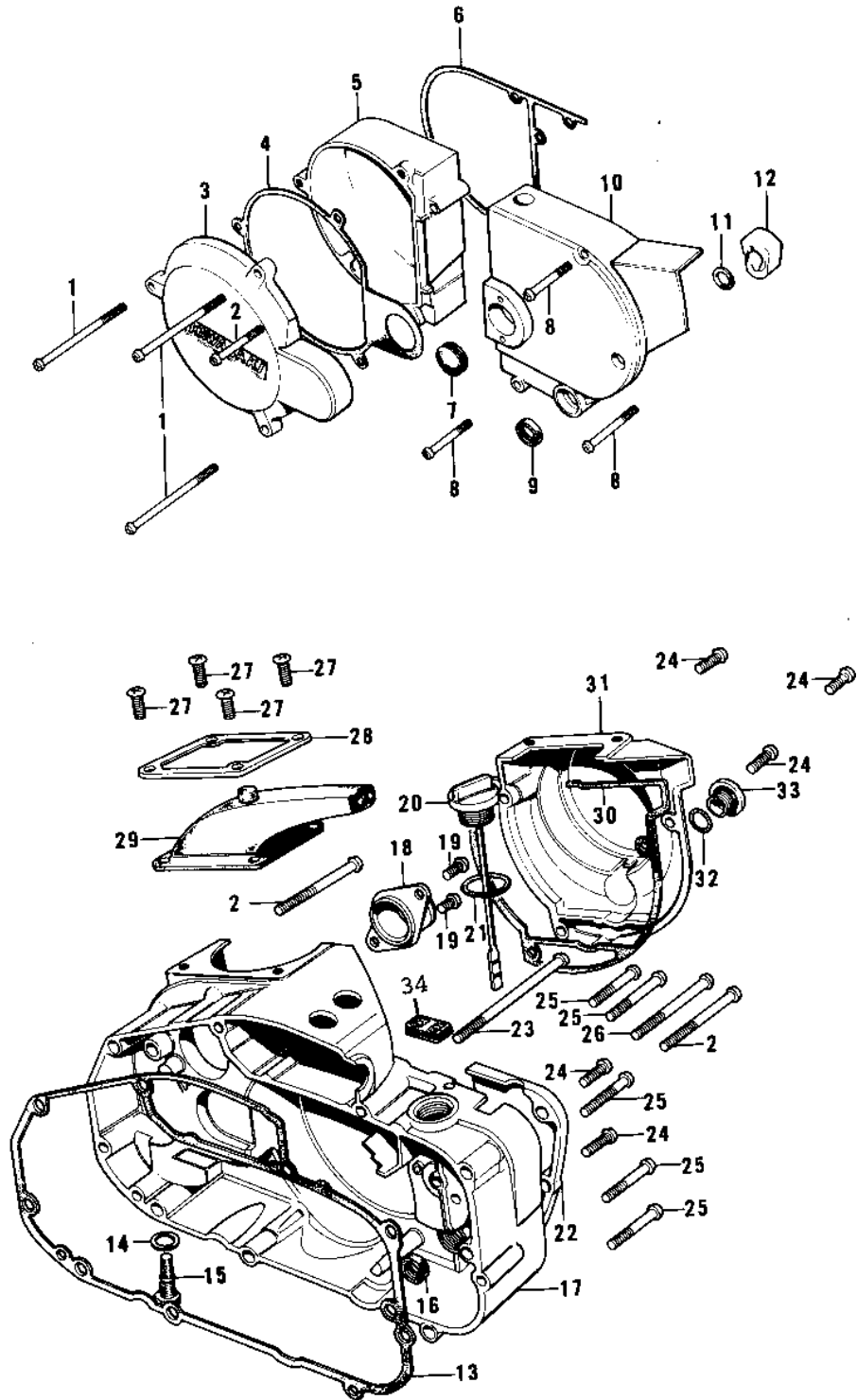


1974 F7-C PARTS DIAGRAM

ENGINE COVERS ('74-'75 F7-C/F6-D)



1974 F7-C PARTS LIST

ENGINE COVERS ('74-'75 F7-C/F6-D)

| ITEM NAME | PART NUMBER | QUANTITY |
|----------------------------------|--------------|----------|
| SCREW-PAN HEAD,6X90 (Ref # 1) | 220B0690 | |
| SCREW PAN HEAD 6X50 (Ref # 2) | 220B0650 | |
| COVER,BRK POINT,BUFF (Ref # 3) | 14027-017-80 | |
| GASKET-BREAKER COVER (Ref # 4) | 14050-003 | |
| COVER,L.H ENG,BUFF (Ref # 5) | 14031-042-80 | |
| GASKET-L.H ENGINE COV (Ref # 6) | 14045-009 | |
| CAP-RUBBER (Ref # 7) | 92073-015 | |
| SCREW PAN HEAD 6X55 (Ref # 8) | 220B0655 | |
| SEAL-OIL (Ref # 9) | 92049-1249 | |
| COVER,CHAIN.BUFF (Ref # 10) | 14026-002-80 | |
| GASKET-CHAIN CASE COV (Ref # 11) | 14045-010 | |
| TENSIONER-CHAIN (Ref # 12) | 13123-006 | |
| GASKET-R.H ENGINE COV (Ref # 13) | 14046-018 | |
| PLUG-FUEL DRAIN (Ref # 14) | 92067-007 | |
| GASKET-DRAIN PLUG (Ref # 15) | 92065-073 | |
| OIL SEAL TB16267 (Ref # 16) | 92051-003 | |
| COVER,R.H ENG.BUFF (Ref # 17) | 14032-092-80 | |
| HOLDER,CARBURETOR (Ref # 18) | 16065-026 | |
| SCREW PAN HEAD 6X12 (Ref # 19) | 220B0612 | |
| PLUG-OIL FILLER (Ref # 20) | 16115-015 | |
| "O" RING,20MM (Ref # 21) | 670B2020 | |
| COVER,OIL PUMP,BUFF (Ref # 22) | 14030-029-80 | |
| SCREW PAN HEAD 6X80 (Ref # 23) | 220B0680 | |
| SCREW PAN HEAD 6X20 (Ref # 24) | 220B0620 | |
| SCREW PAN HEAD 6X35 (Ref # 25) | 220B0635 | |
| SCREW PAN HEAD 6X40 (Ref # 26) | 220B0640 | |
| SCREW PAN HEAD 6X16 (Ref # 27) | 220B0616 | |
| HOLDER-CARBURETOR CAP (Ref # 28) | 14065-002 | |
| CAP,CARBURETOR (Ref # 29) | 14038-037 | |

1974 F7-C PARTS LIST

ENGINE COVERS ('74-'75 F7-C/F6-D)

| ITEM NAME | PART NUMBER | QUANTITY |
|----------------------------------|--------------|----------|
| GASKET-CARBURETOR COV (Ref # 30) | 14048-003 | |
| COVER,CARB,BUFF (Ref # 31) | 14030-057-80 | |
| "0" RING,20MM (Ref # 32) | 670B2020 | |
| PLUG,CARBURETOR COVER (Ref # 33) | 92067-022 | |
| GROMMET-OVERFLOW PIPE (Ref # 34) | 16136-005 | |