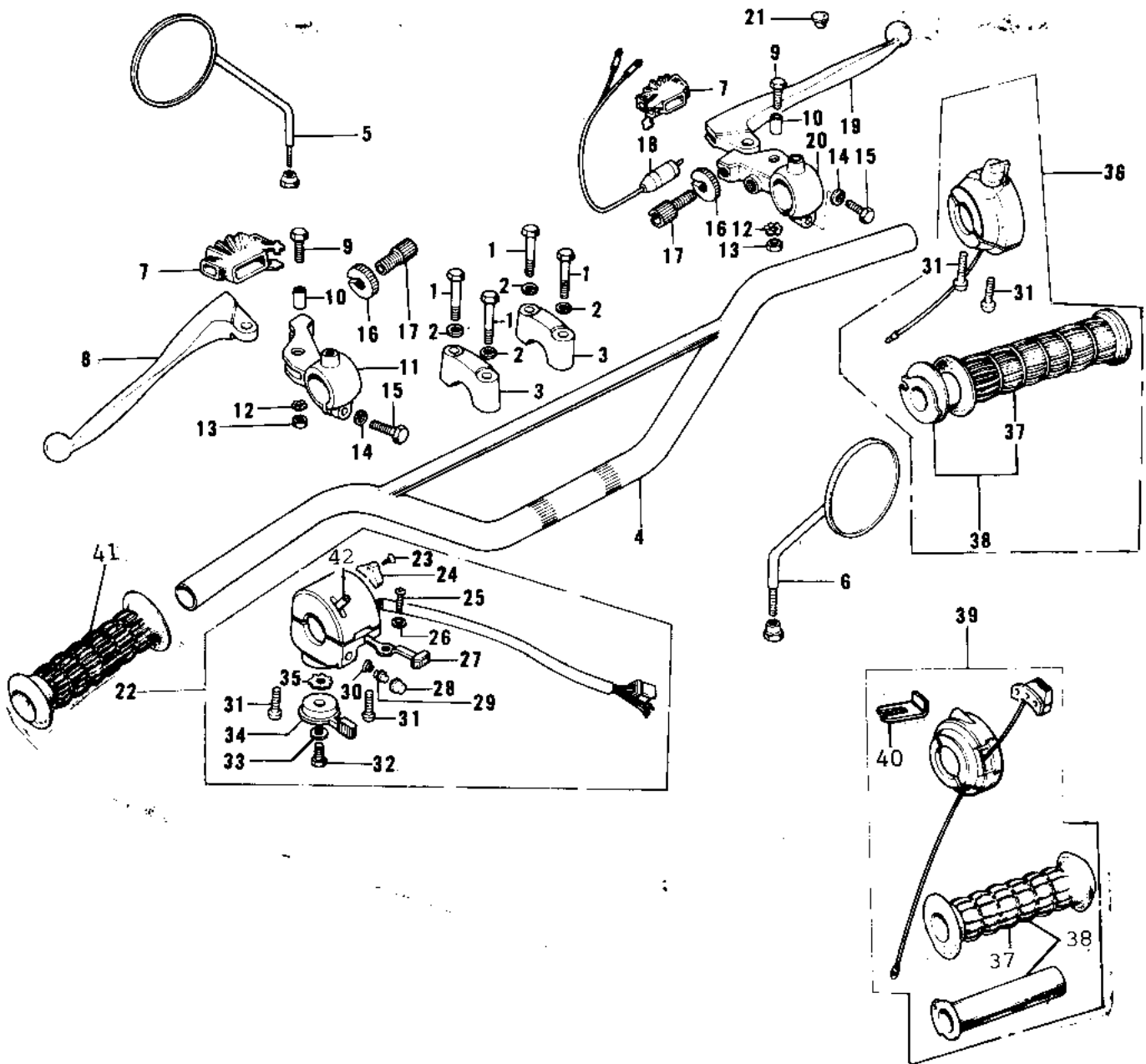


1971 F7 PARTS DIAGRAM

HANDLEBAR



1971 F7 PARTS LIST

HANDLEBAR

ITEM NAME	PART NUMBER	QUANTITY
BOLT 8X38 (Ref # 1)	92001-1405	4
WASHER SPRING 8MM (Ref # 2)	461F0800	4
HOLDER-HANDLEBAR (Ref # 3)	46012-008	2
HANDLEBAR (Ref # 4)	46004-016	1
REAR VIEW MIRROR,L.H (Ref # 5)	56003-009	1
REAR VIEW MIRROR,R.H (Ref # 6)	56002-020	1
DUST COVER (Ref # 7)	46071-002	2
LEVER-CLUTCH (Ref # 8)	46092-015	1
BOLT HEX HEAD 5X20 (Ref # 9)	92007-020	2
COLLAR LEVER (Ref # 10)	46059-011	2
HOLDER-CLUTCH LEV,BLK (Ref # 11)	46094-011-21	1
WASHER LOCK 5MM (Ref # 12)	464H0500	2
NUT 5MM (Ref # 13)	312B0500	2
WASHER PLAIN 6MM (Ref # 14)	410B0600	2
BOLT HEX HEAD 6X25 (Ref # 15)	110N0625	2
NUT-LOCK (Ref # 16)	46056-005	2
SCREW,CABLE ADJUST (Ref # 17)	46055-010	2
SCREW ADJUST (Ref # 17)	46055-006	2
SCREW,CABLE ADJUST (Ref # 17)	46055-010	2
SWITCH-FR. BRAKE LAMP (Ref # 18)	27021-004	1
LEVER FRONT BRAKE (Ref # 19)	46058-004	1
HOLDER-FR BRK LEV,BLK (Ref # 20)	46060-009-21	1
CAP-RR VIEW MIRROR (Ref # 21)	92102-009	1
CASE ASSY,L.H,BLACK (Ref # 22)	46091-019-10	1
SCREW CNTSNK HD 3X8 (Ref # 23)	221B0308A	8
KNOB-L.H SWITCH (Ref # 24)	46044-011	1
L.H GRIP SWITCH KIT (Ref # 23,24,)	99990-531	1
SCREW PAN HEAD 3X5 (Ref # 25)	220B0305A	1
WASHER (Ref # 26)	92095-010	1

1971 F7 PARTS LIST

HANDLEBAR

ITEM NAME	PART NUMBER	QUANTITY
KNOB-SWITCH (Ref # 27)	46044-010	1
SWITCH ASSY,HORN BUTN (Ref # 28)	27010-1009	1
SWITCH ASSY,HORN BUTN (Ref # 29)	27010-1009	1
SWITCH ASSY,HORN BUTN (Ref # 30)	27010-1009	1
SCREW-PAN-CROS,5X25 (Ref # 31)	220B0525	4
BOLT HEX HEAD 6X8 (Ref # 32)	110B0608	1
WASHER PLAIN 6MM (Ref # 33)	410B0600	1
LEVER,STARTER,BLACK (Ref # 34)	46096-008-10	1
WASHER LOCK (Ref # 35)	92095-012	1
CASE ASSY,R.H,BLACK (Ref # 36)	46018-020-10	1
RUBBER-R.H. GRIP (Ref # 37)	46061-013	1
GRIP ASSY-THROTTLE (Ref # 38)	46019-020	1
GRIP ASSY,THROTTLE (Ref # 38)	46019-034	1
CASE ASSY,R.H (Ref # 39)	46018-036	1
HOLDER,CONTROL CABLE (Ref # 40)	46037-023	1
RUBBER-L.H.GRIP (Ref # 41)	46075-018	1
RUBBER-L.H GRIP (Ref # 41)	46075-019	1
SWITCH ASSY,L.H (Ref # 42)	46089-015	1