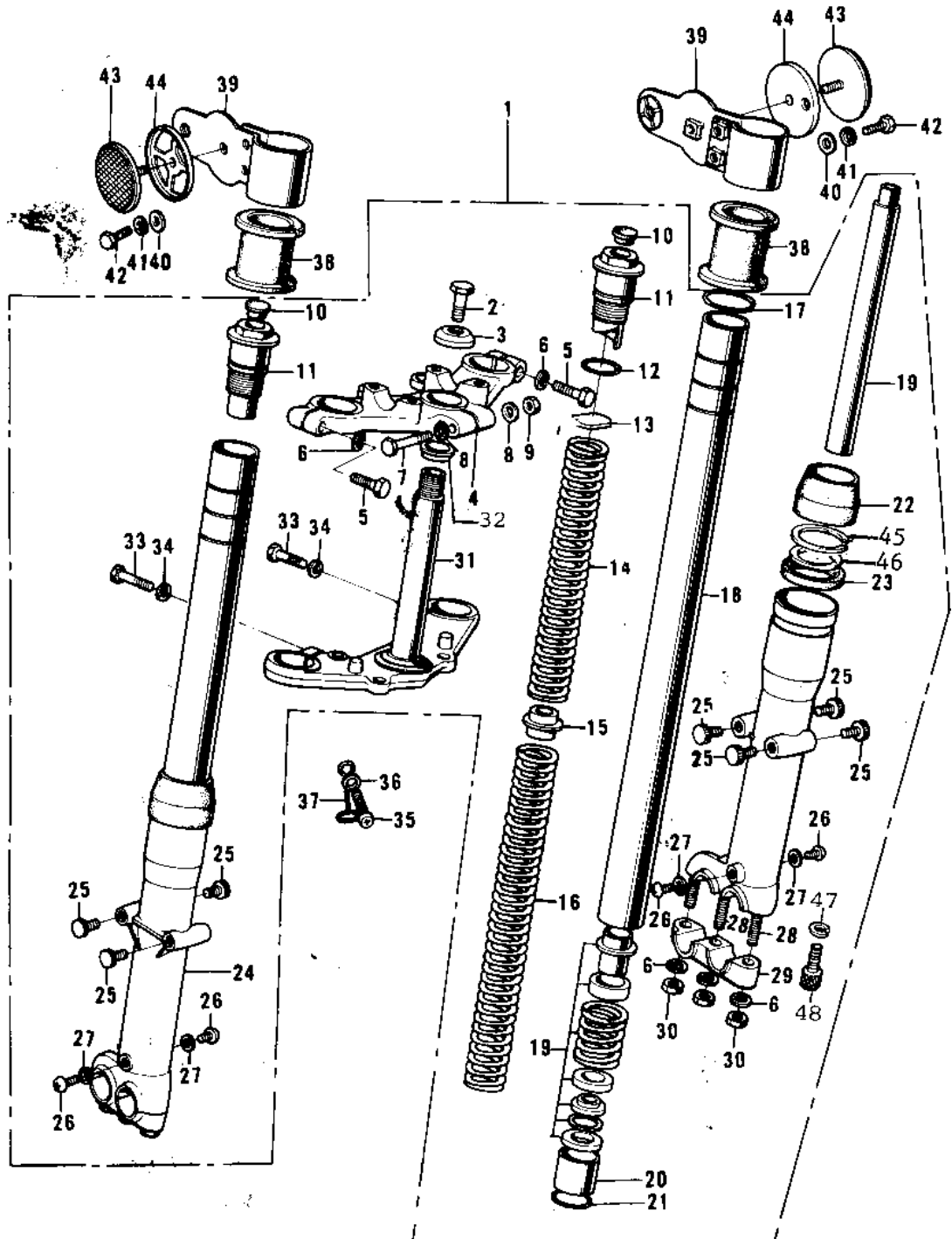


1971 F7 PARTS DIAGRAM

FRONT FORK



1971 F7 PARTS LIST

FRONT FORK

ITEM NAME	PART NUMBER	QUANTITY
FORK-FRONT (Ref # 1)	44001-102	1
BOLT STRNG STEM HEAD (Ref # 2)	44041-007	1
WASHER STRNG STEM HD (Ref # 3)	44043-016	1
HEAD-STEERING STEM (Ref # 4)	44039-049	1
BOLT-STEERING STEM HD (Ref # 5)	44041-044	2
WASHER SPRING 8MM (Ref # 6)	461F0800	8
BOLT-STEERING STEM HD (Ref # 7)	44041-042	1
WASHER PLAIN 8MM (Ref # 8)	410B0800	2
NUT,LOCK,8MM (Ref # 9)	92015-1124	1
CAP-FORK TOP BOLT (Ref # 10)	44062-004	2
BOLT-FORK TOP (Ref # 11)	44041-046	2
'O' RING INNER TUBE (Ref # 12)	44046-014	2
WASHER-FORK SPRG SEAT (Ref # 13)	44029-016	2
SPRING-FORK,SHORT (Ref # 14)	44026-035	2
GUIDE-FORK SPRING (Ref # 15)	44028-019	2
SPRING-FORK,LONG (Ref # 16)	44026-034	2
CIRCLIP (Ref # 17)	44044-011	2
TUBE-FORK INNER (Ref # 18)	44013-027	2
CYLINDER-FORK (Ref # 19)	44022-005	2
PISTON-FORK (Ref # 20)	44018-004	2
CIRCLIP (Ref # 21)	44044-010	2
DUST SHIELD FORK (Ref # 22)	44010-006	2
OIL SEAL (Ref # 23)	92049-1049	2
TUBE,LH,FORK OUTER (Ref # 24)	44005-034-80	2
CAP (Ref # 25)	44062-002	7
SCREW PAN HEAD 4X8 (Ref # 26)	220B0408	4
GASKET FORK DRAIN PLG (Ref # 27)	44045-002	4
STUD 8X30 (Ref # 28)	172G0830	6
HOLDER-FRONT AXLE (Ref # 29)	44063-002	2

1971 F7 PARTS LIST

FRONT FORK

ITEM NAME	PART NUMBER	QUANTITY
NUT,8MM (Ref # 30)	311B0800	6
STEM-STEERING (Ref # 31)	44037-054	1
CONE LOWER BEARING (Ref # 32)	92047-004	1
BOLT HEX HEAD 10X32 (Ref # 33)	113B1032	2
WASHER SPRING 10MM (Ref # 34)	461F1000	2
BOLT,6X10 (Ref # 35)	112G0610	1
WASHER PLAIN 6MM (Ref # 36)	410B0600	1
CLAMP-CABLE (Ref # 37)	92037-046	1
DAMPER RUBBER (Ref # 38)	92075-064	2
BRACKET-HEAD LAMP,BLK (Ref # 39)	23064-011-21	2
WASHER PLAIN 6MM (Ref # 40)	410B0600	4
WASHER SPRING 6MM (Ref # 41)	461F0600	4
BOLT-UPSET (Ref # 42)	112G0618	4
REFLECTOR-REFLEX,FRNT (Ref # 43)	28012-006	2
DAMPER RUBBER (Ref # 44)	92075-137	2
CIRCLIP-OIL SEAL FIT (Ref # 45)	44044-014	2
WASHER-OIL SEAL FIT (Ref # 46)	44043-045	2
GASKET FORK CYL BOLT (Ref # 47)	44045-030	2
BOLT FORK CYLINDER (Ref # 48)	44041-027	2