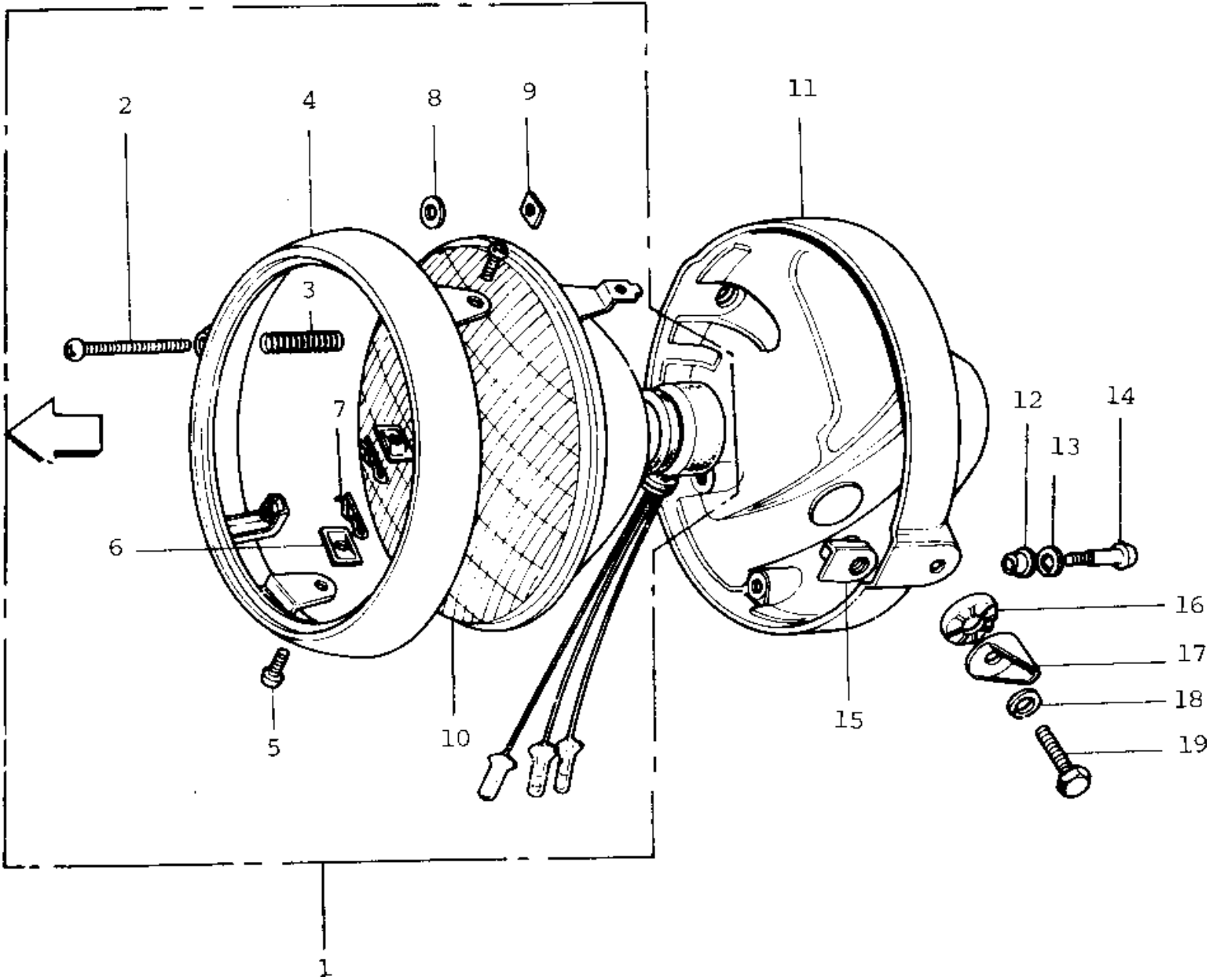


1972 F7-A PARTS DIAGRAM

HEADLIGHT ('74-'75 F7-C/F6-D)



1972 F7-A PARTS LIST

HEADLIGHT ('74-'75 F7-C/F6-D)

| ITEM NAME | PART NUMBER | QUANTITY |
|---------------------------------|--------------|----------|
| LAMP UNIT-HEAD (Ref # 1) | 23003-015 | |
| SCREW FORCUS ADJUST (Ref # 2) | 23019-021 | |
| SPRING FOCUS ADJUST (Ref # 3) | 23014-005 | |
| RIM-HEAD LAMP (Ref # 4) | 23006-028 | |
| SCREW LENS UNIT FITT (Ref # 5) | 23019-018 | |
| NUT LENS UNIT FITTING (Ref # 6) | 23020-009 | |
| PIN LENS UNIT FITTING (Ref # 7) | 23022-001 | |
| WASHER (Ref # 8) | 23021-004 | |
| NUT (Ref # 9) | 23020-016 | |
| LENS UNIT-HEAD LAMP (Ref # 10) | 23007-032 | |
| BODY-HEAD LAMP,BLACK (Ref # 11) | 23005-034-10 | |
| WASHER (Ref # 12) | 23021-010 | |
| WASHER SPRING 5MM (Ref # 13) | 461F0500 | |
| SCREW-PAN HEAD,5MM (Ref # 14) | 92011-024 | |
| NUT (Ref # 15) | 23020-017 | |
| WASHER-LOCK (Ref # 16) | 23021-011 | |
| DAMPER RUBBER (Ref # 17) | 92075-134 | |
| WASHER SPRING 10MM (Ref # 18) | 461F1000 | |
| BOLT,10MM (Ref # 19) | 92007-024 | |