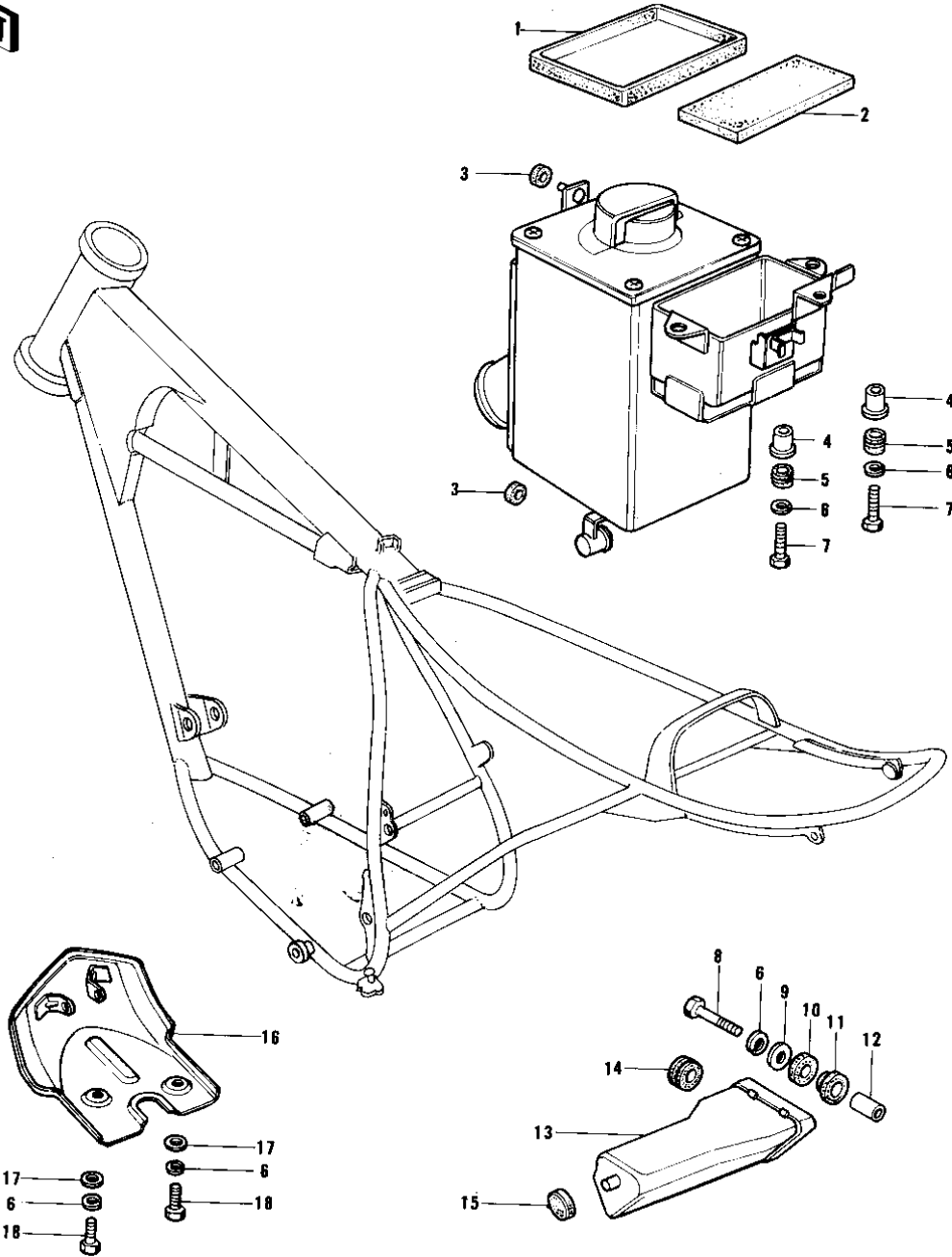


# 1978 KE175 PARTS DIAGRAM

## TOOL CASE



## 1978 KE175 PARTS LIST

### TOOL CASE

ITEM NAME	PART NUMBER	QUANTITY
MAT-BATTERY SIDE (Ref # 1)	32103-023	
MAT,BATTERY (Ref # 2)	32103-027	
DAMPER RUBBER,CLENER (Ref # 3)	92075-217	
COLLAR (Ref # 4)	92027-153	
DAMPER RUBBER (Ref # 5)	92075-051	
WASHER SPRING 6MM (Ref # 6)	461F0600	
BOLT-UPSET,6X16 (Ref # 7)	112G0616	
BOLT-UPSET (Ref # 8)	112G0625	
WASHER,PLAIN,7MM (Ref # 9)	92022-228	
DAMPER RUBBER (Ref # 10)	92075-175	
RUBBER,FENDER COVER (Ref # 11)	92075-174	
COLLAR,REAR FENDER (Ref # 12)	92027-162	
CASE,TOOL (Ref # 13)	32098-022	
DAMPER RUBBER-OIL TNK (Ref # 14)	92075-150	
DAMPER RUBBER (Ref # 15)	92075-107	
GUARD,ENGINE (Ref # 16)	55011-023	
WASHER 6.5X20X1.6T (Ref # 17)	92022-125	
BOLT-UPSET,6X16 (Ref # 18)	112G0616	