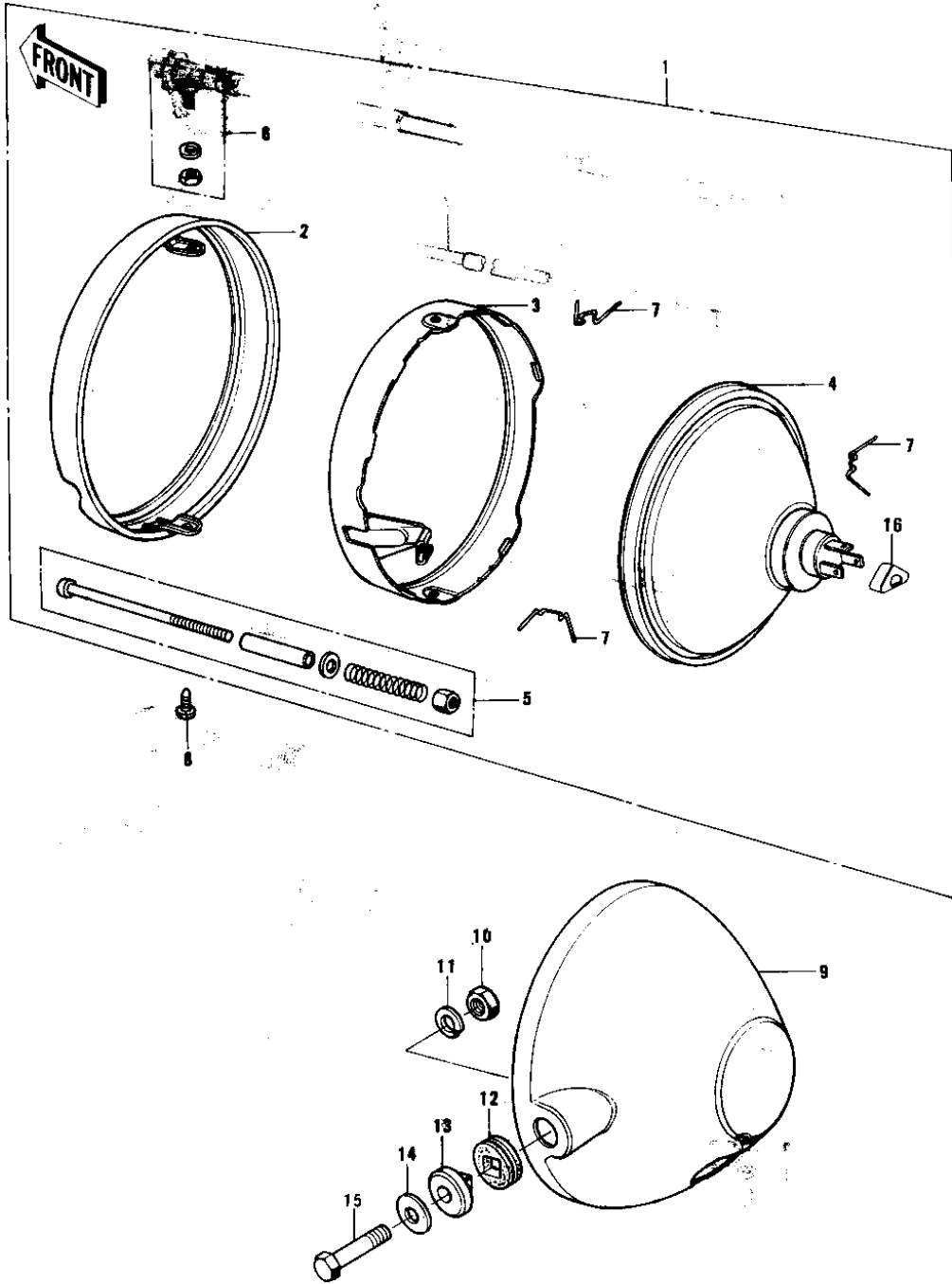


# 1976 KE175 PARTS DIAGRAM

## HEADLIGHT



## 1976 KE175 PARTS LIST

### HEADLIGHT

ITEM NAME	PART NUMBER	QUANTITY
LAMP UNIT,HEAD (Ref # 1)	23004-1012	1
LAMP UNIT,HEAD (Ref # 1)	23004-1012	1
RIM,HEAD LAMP (Ref # 2)	23006-042	1
RETAINER,SEALED BEAM (Ref # 3)	23072-002	1
LENS UNIT,HEAD LAMP (Ref # 4)	23007-068	1
SEALED BEAM UNIT (Ref # 4)	23007-073	1
SCREW ASSY,FOCUS AJST (Ref # 5)	23013-5001	1
SCREW SET,LENS UNIT (Ref # 6)	23013-007	2
CLAMP,HEAD LAMP LENS (Ref # 7)	23009-015	3
SCREW,PAN HEAD,5X14 (Ref # 8)	23019-025	1
BODY,HEAD LAMP,F.BLAK (Ref # 9)	23005-050-21	1
NUT,10MM (Ref # 10)	314B1000	2
WASHER SPRING 10MM (Ref # 11)	461F1000	2
DAMPER RUBBER (Ref # 12)	23066-011	2
COLLAR (Ref # 13)	23052-005	2
WASHER-PLAIN,10MM (Ref # 14)	411D1000	2
BOLT,HEX HEAD,10X30 (Ref # 15)	92007-041	2
COVER,HD LAMP SOCKET (Ref # 16)	23081-001	1