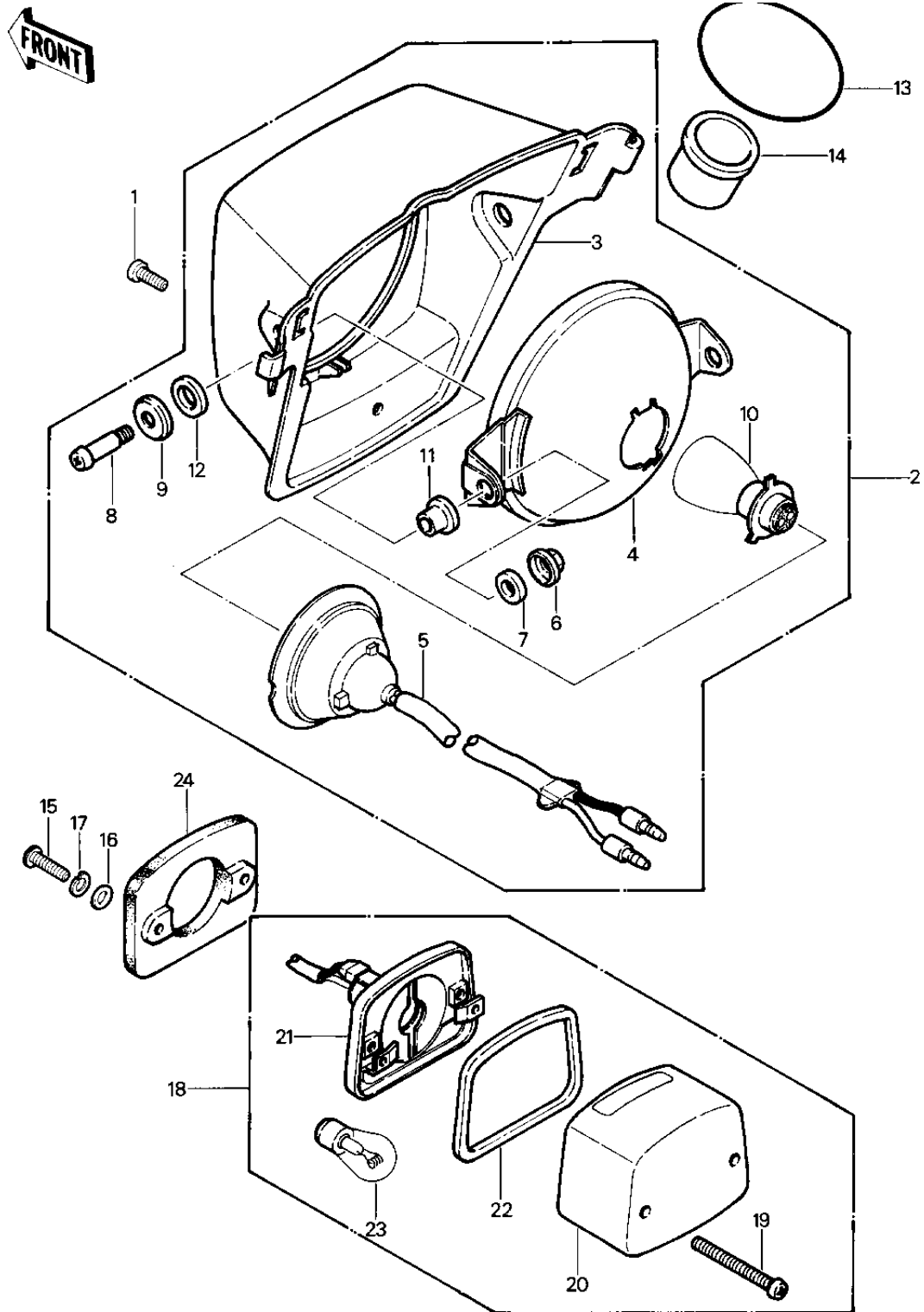


1982 KLT200 PARTS DIAGRAM

HEADLIGHT/TAILLIGHT ('81-'82 KLT200-A1/A)



1982 KLT200 PARTS LIST

HEADLIGHT/TAILLIGHT ('81-'82 KLT200-A1/A)

| ITEM NAME | PART NUMBER | QUANTITY |
|----------------------------------|---------------|----------|
| SCREW PAN HEAD 6X12 (Ref # 1) | 220B0612 | 1 |
| LAMP ASSY HEAD, GREEN (Ref # 2) | 23001-4002-6W | 1 |
| LAMP ASSY HEAD, BLACK (Ref # 2) | 23001-4002-6D | 1 |
| BODY HEAD LAMP, GREEN (Ref # 3) | 23005-4002-6W | 1 |
| BODY HEAD LAMP, BLACK (Ref # 3) | 23005-4002-6D | 1 |
| LENS HEAD LAMP (Ref # 4) | 23007-4001 | 1 |
| SOCKET H.L. (Ref # 5) | 23008-4004 | 1 |
| NUT, HEAD LAMP RIM FIT (Ref # 6) | 23020-023 | 2 |
| WASHER-PLAIN, 5MM (Ref # 7) | 23021-012 | 2 |
| SCREW, HEAD LAMP (Ref # 8) | 92009-4003 | 2 |
| WASHER, HEAD LAMP (Ref # 9) | 92022-4005 | 2 |
| BULB 12V 35/25W (Ref # 10) | 92069-037 | 1 |
| DAMPER, HEAD LAMP (Ref # 11) | 92075-4009 | 2 |
| DAMPER, HEAD LAMP (Ref # 12) | 92075-4010 | 2 |
| "O" RING (Ref # 13) | 671B2585 | 2 |
| DAMPER (Ref # 14) | 92075-4005 | 2 |
| SCREW PAN HEAD 5X18 (Ref # 15) | 220B0518 | 2 |
| WASHER PLAIN 5MM (Ref # 16) | 410B0500 | 2 |
| WASHER SPRING 5MM (Ref # 17) | 461F0500 | 2 |
| LAMP, TAIL (Ref # 18) | 23025-4001 | 1 |
| SCREW-PAN-CROS (Ref # 19) | 220B0330 | 2 |
| LENS, TAIL LAMP (Ref # 20) | 23026-040 | 1 |
| CASE, TAIL LAMP (Ref # 21) | 23027-044 | 1 |
| GASKET, TAIL LIGHT (Ref # 22) | 23028-020 | 1 |
| BULB, 12V 32/3CP (Ref # 23) | 92069-059 | 1 |
| DAMPER RUBBER (Ref # 24) | 92075-4014 | 1 |