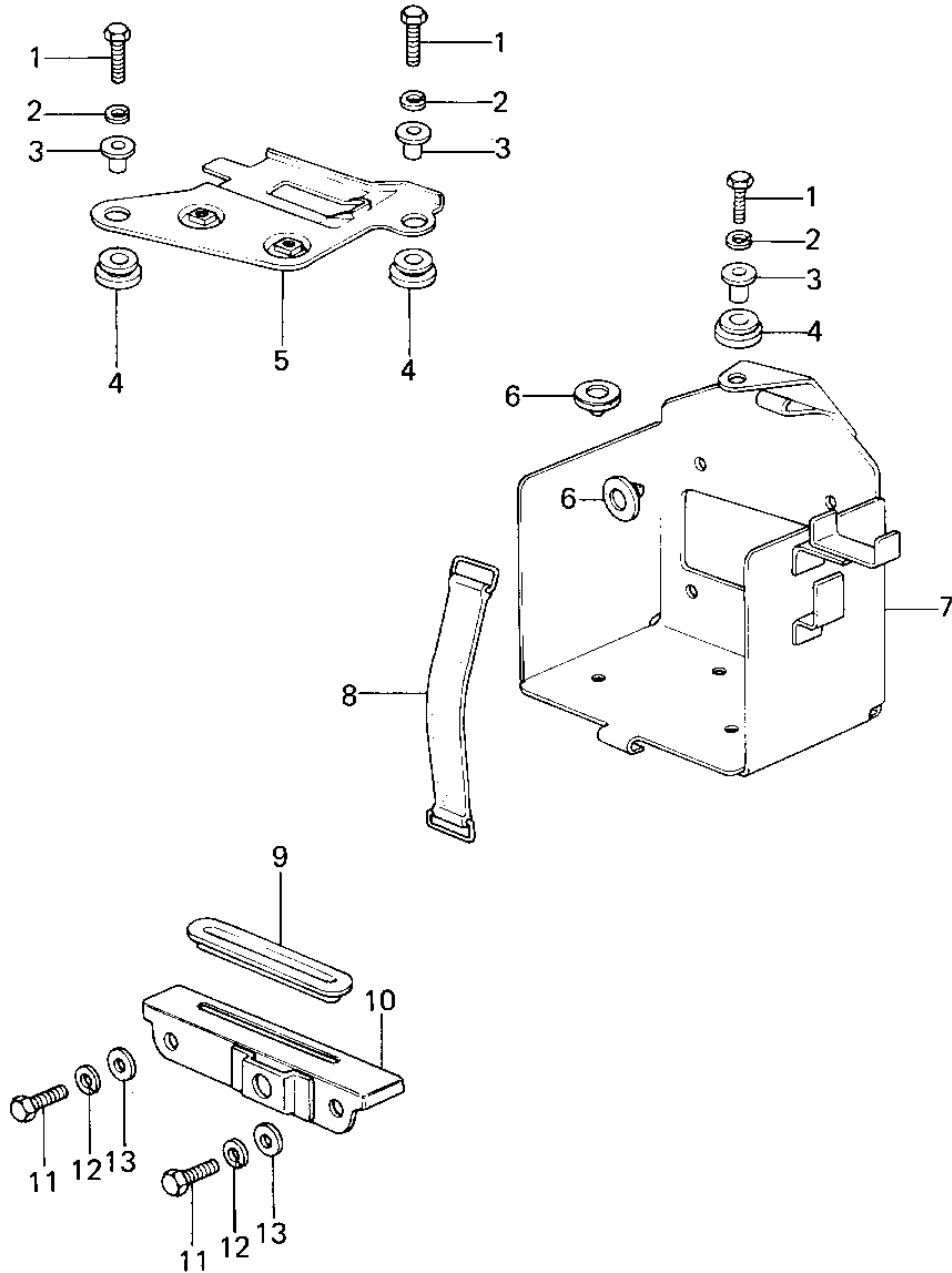


# 1978 KZ200-A1 PARTS DIAGRAM

## BATTERY CASE/ELECTRO BRACKET



## 1978 KZ200-A1 PARTS LIST

### BATTERY CASE/ELECTRO BRACKET

| ITEM NAME                        | PART NUMBER | QUANTITY |
|----------------------------------|-------------|----------|
| BOLT 6X22 (Ref # 1)              | 112B0622    | 3        |
| WASHER SPRING 6MM (Ref # 2)      | 461F0600    | 3        |
| COLLAR (Ref # 3)                 | 92027-194   | 3        |
| DAMPER RUBBER (Ref # 4)          | 92075-277   | 3        |
| BRACKET,BASE (Ref # 5)           | 32129-015   | 1        |
| DAMPER RUBBER (Ref # 6)          | 92075-078   | 4        |
| CASE,BATTERY (Ref # 7)           | 32097-046   | 1        |
| BAND BATTERY (Ref # 8)           | 92072-006   | 1        |
| DAMPER RUBBER (Ref # 9)          | 92075-280   | 1        |
| BRACKET,BASE (Ref # 10)          | 32129-014   | 1        |
| BOLT-SMALL-UPSET,8X16 (Ref # 11) | 115G0816    | 2        |
| WASHER SPRING 8MM (Ref # 12)     | 461F0800    | 2        |
| WASHER PLAIN 8MM (Ref # 13)      | 411B0800    | 2        |