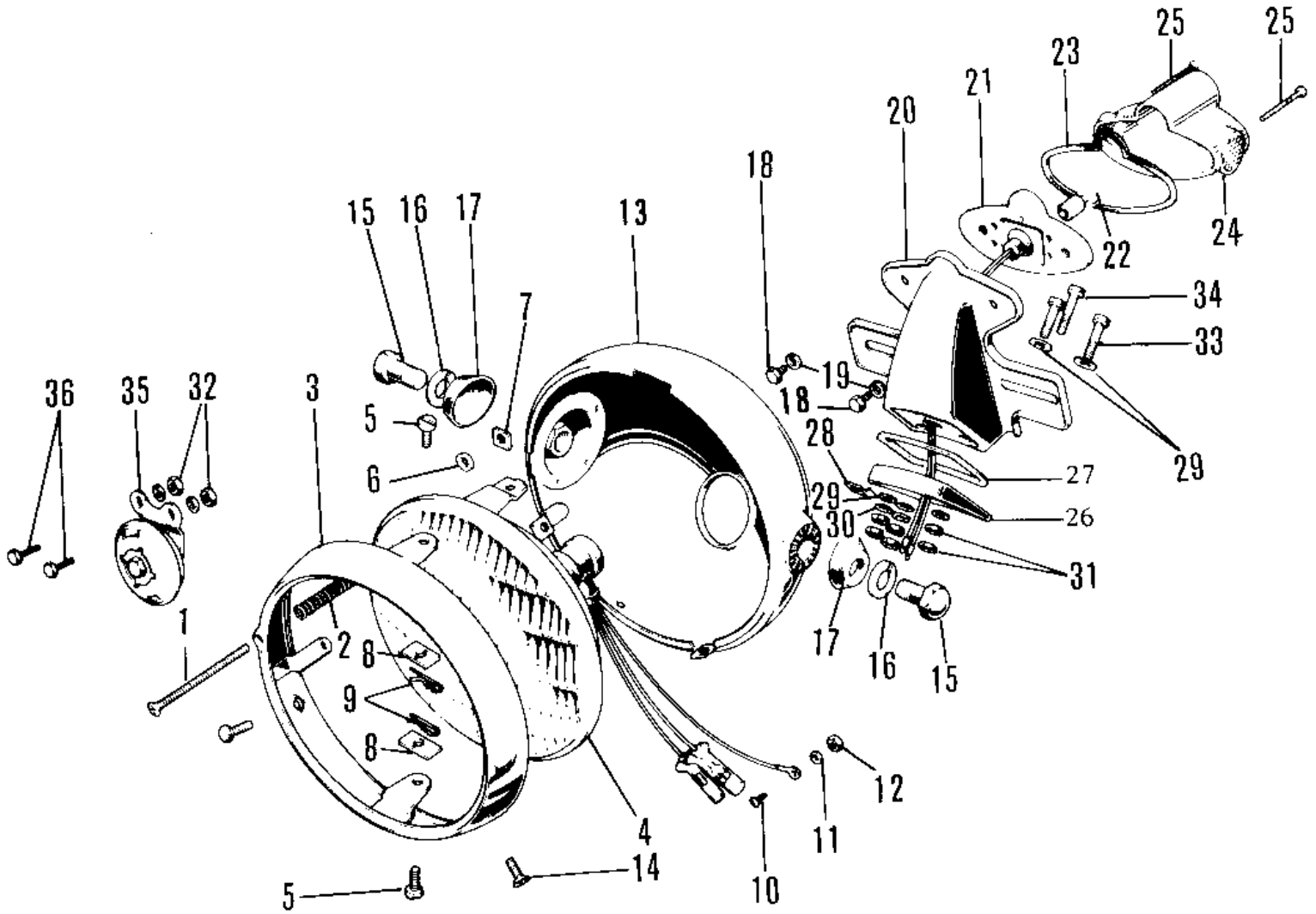


# 1972 F8-A PARTS DIAGRAM

HEADLIGHT/TAILLIGHT



# 1972 F8-A PARTS LIST

## HEADLIGHT/TAILLIGHT

ITEM NAME	PART NUMBER	QUANTITY
LAMP UNIT-HEAD (Ref # 1-12)	23003-008	1
SCREW FORCUS ADJUST (Ref # 1)	23019-021	1
SPRING FOCUS ADJUST (Ref # 2)	23014-005	1
RIM HEAD LAMP (Ref # 3)	23006-014	1
SEALED BEAM UNIT (Ref # 4)	23007-022	1
SCREW LENS UNIT FITT (Ref # 5)	23019-018	2
WASHER (Ref # 6)	23021-004	1
NUT (Ref # 7)	23020-016	1
NUT LENS UNIT FITTING (Ref # 8)	23020-009	2
PIN LENS UNIT FITTING (Ref # 9)	23022-001	2
SCREW-PAN-HEAD 3X6 (Ref # 10)	220B0306	1
WASHER SPRING 3MM (Ref # 11)	461F0300	1
NUT-HEX (Ref # 12)	311B0300	1
BODY-HEAD LAMP,BLACK (Ref # 13)	23005-022-21	1
SCREW OVL CNTSNK 5X10 (Ref # 14)	222E0510	2
BOLT,HEX HEAD,10X25 (Ref # 15)	92007-045	2
WASHER PLAIN 10MM (Ref # 16)	411B1000	2
DAMPER RUBBER (Ref # 17)	92075-058	2
LAMP ASSY-TAIL,BLACK (Ref # 18-25)	23024-019-21	1
BOLT HEX HEAD 5X10 (Ref # 18)	110N0510A	2
WASHER SPRING 5MM (Ref # 19)	461F0500	2
BKT LICENSE PLT BLACK (Ref # 20)	23036-007-10	1
SOCKET TAIL LAMP (Ref # 21)	23027-009	1
BULB 6V 3/21CP (Ref # 22)	92069-023	1
GASKET TAIL LAMP (Ref # 23)	23028-008	1
LENS TAIL LAMP (Ref # 24)	23026-010	1
SCREW PAN HEAD 4X50 (Ref # 25)	220E0450	2
STAY-TAIL LAMP (Ref # 26)	35031-005	1
DAMPER RUBBER (Ref # 27)	35016-004	1

## 1972 F8-A PARTS LIST

### HEADLIGHT/TAILLIGHT

ITEM NAME	PART NUMBER	QUANTITY
CLIP WIRING HARNESS (Ref # 28)	35024-002	2
WASHER 6.5X20X1.6T (Ref # 29)	92022-125	6
WASHER SPRING 6MM (Ref # 30)	461F0600	3
NUT 6MM (Ref # 31)	312B0600	6
NUT 6MM (Ref # 32)	311B0600	2
BOLT-HEX HEAD,6X32 (Ref # 33)	110N0632	2
BOLT-UPSET,6X40 (Ref # 34)	112G0640	1
HORN (Ref # 35)	27003-062	1
BOLT-UPSET,6X20 (Ref # 36)	112G0620	2